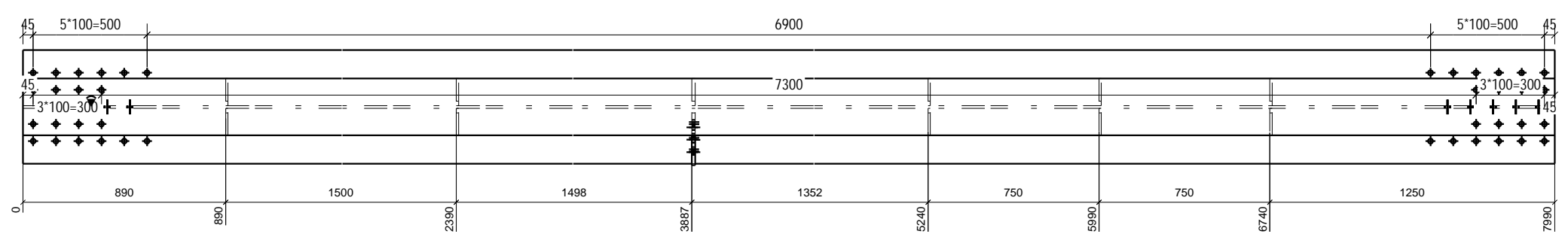
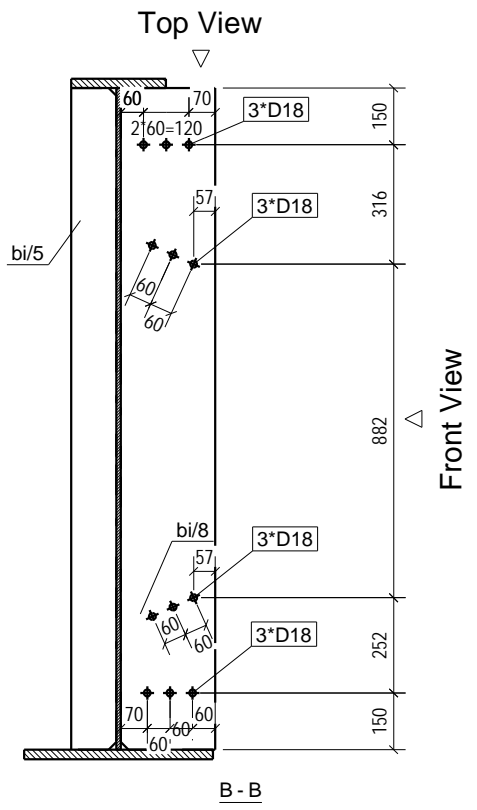
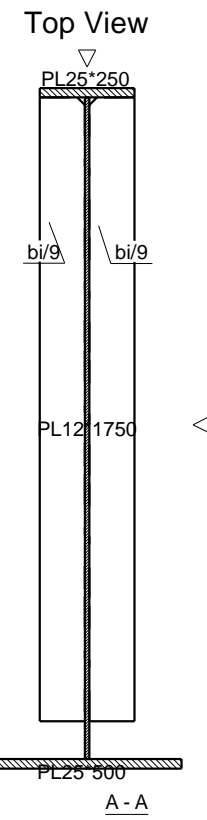


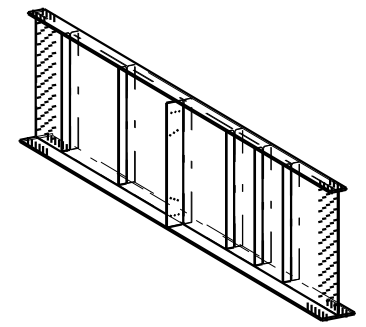
Front View



Top View



BILL OF MATERIAL					
MATERIAL LIST FOR ONE ASSEMBLY					
Grid: 4-6/A-C'				No. Required: 3	
Mark	Grade	Size	No	Length	Weight PC
b/1	ST37	PL25*500	1	7990	784.0
b/29	ST37	PL12*1750	1	7990	1317.2
b/35	ST37	PL25*250	1	7990	392.0
bi/5	ST37	PL15*119	1	1750	24.5
bi/8	ST37	PL15*250	1	1750	51.5
bi/9	ST37	PL10*119	10	1650	15.4
<b>TOTAL (kg)</b>					<b>2723.4</b>



3D

**GENERAL NOTES**

1- جهات شمال و جنوب درستونها، جهات جغرافیایی محل نصب میباشد.  
 2- جهت نصب حتما و فقط در قسمت بالای تیر علامت زده شود.  
 3- جوش ستونها یا پدستالها به بیس پلیت نفوذی است.

**Legend:**

lci=Part 01-For Col-Intracacy	lii=Part 01-For IPE Beams-Intracacy
lB1=Beam And 01 Th Type At Part 01	ST=Stair
lbi=Part 01-For Beams-Intracacy	LP=Loose Part
lC1=Collumns And 01 Th Type At Part 01	
li=Part 01-IPE Beam	

**General Corner Welding Dimensions For Beams&Collumns**

Section	C.W.D/Section	C.W.D/Section	C.W.D/Section	C.W.D/Section	C.W.D/Section	C.W.D/Section	C.W.D/Section	General Notes:				
CS1	20	CS8	15	PG41	6	PG48	6	PG59	6	PG97	8	
CS1a	20	CS7	15	PG43	6	PG54	6	PG610	6	PG98	8	جوش باقی اتصالات با بعد
CS2	18	CS8	12	PG44	6	PG55	6	PG611	6	PG99	9	فلت دهم ضخامت
CS3	18	CS9	10	PG45	6	PG56	6	PG94	8	PG10	12	ورق نازکتر اجرا گردد.
CS4	15	CS10	10	PG46	6	PG57	6	PG95	8	PG11	12	
CS5	12	CS11	10	PG47	6	PG58	6	PG96	8	PG118	16	

0	01	1395-05-24	Rad.Engineer	Rad.Engineer	Rad.Engineer
REV.	Phase Number:	Created date:	Modeled By:	Checked By:	Project Manager:

DESCRIPTION	PROJECT TITLE:	CONTRACTOR:
SCALE:	آژدره تهران شمال-پل نه ال	
UNIT:	OWNER:	شرکت آبادگران مارگون
FIELD:	CONSULTANT:	
PHASE:	DRAWING TITLE:	
01	PG1/7	
Project No.:	PH. 01	R. 0
		1/1