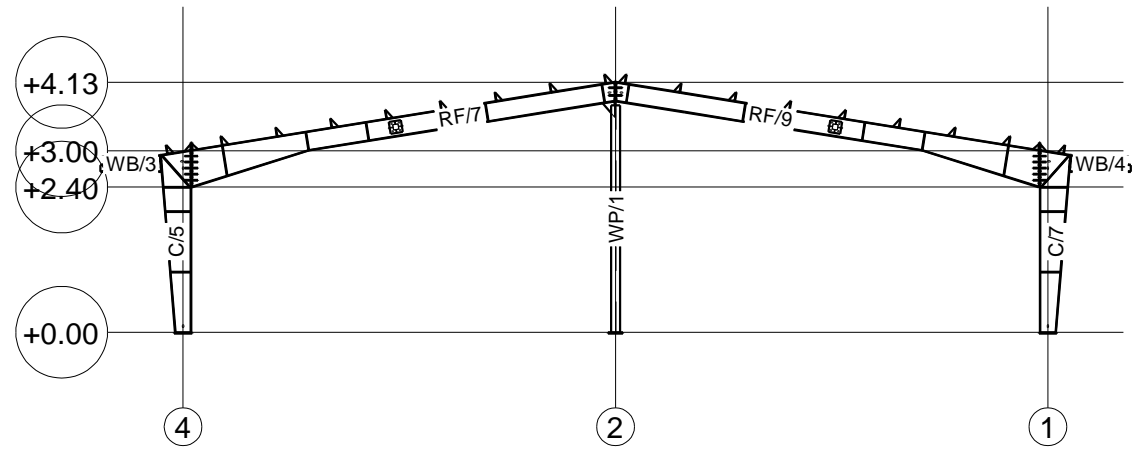
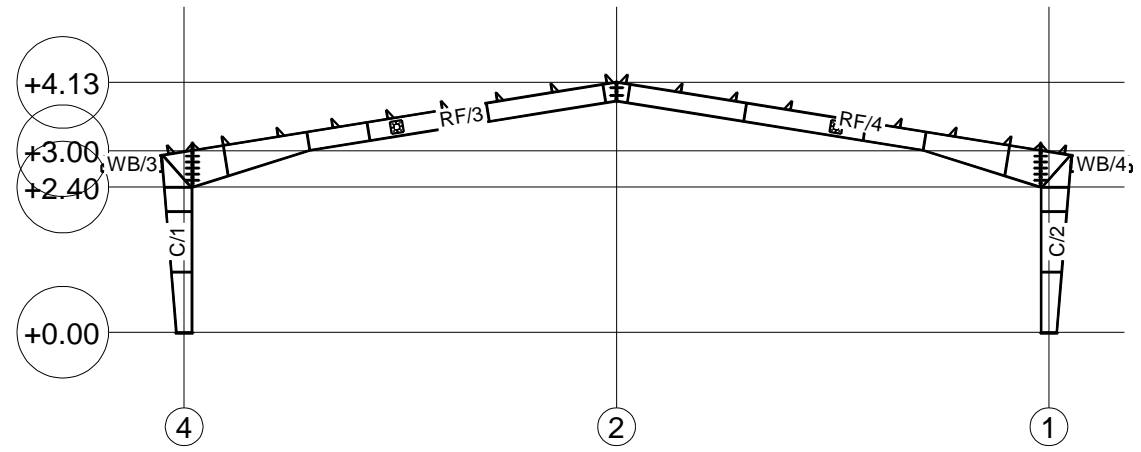


3D

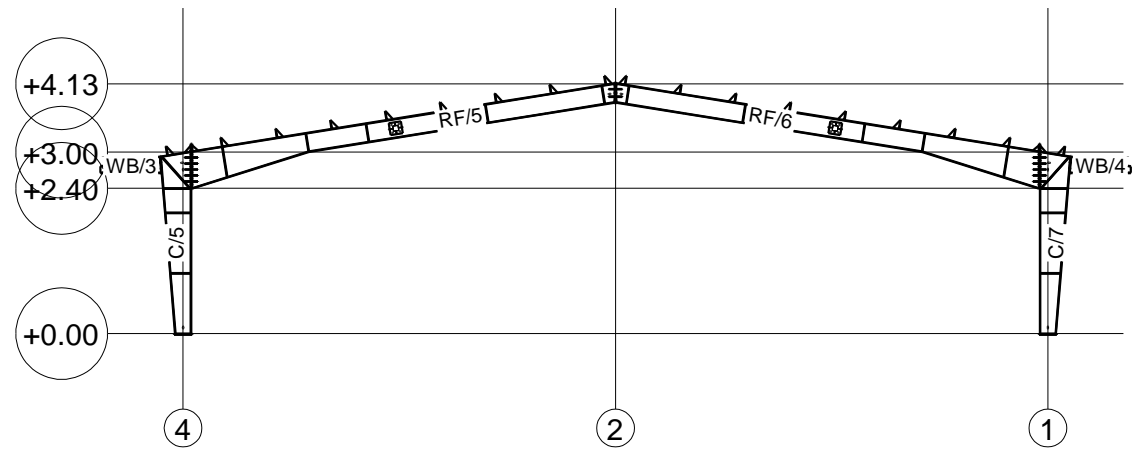
1	01	1395-05-30	Rad.Engineer	Rad.Engineer	Rad.Engineer
0	01	1395-05-27	Rad.Engineer	Rad.Engineer	Rad.Engineer
REV.	Phase Number:	Created date:	Modeled By:	Checked By:	Project Manager:
DESCRIPTION	PROJECT TITLE:			CONTRACTOR:	
SCALE:	سوله مر غداري آقاي دبيري				
N.T.S					
UNIT:	OWNER:			جناب آقاي دبيري	
mm					
FIELD:	CONSULTANT:				
Structure					
PHASE :	DRAWING TITLE:				
01	3D				
Project No.:		- PH. 01	R. 1	1/1	



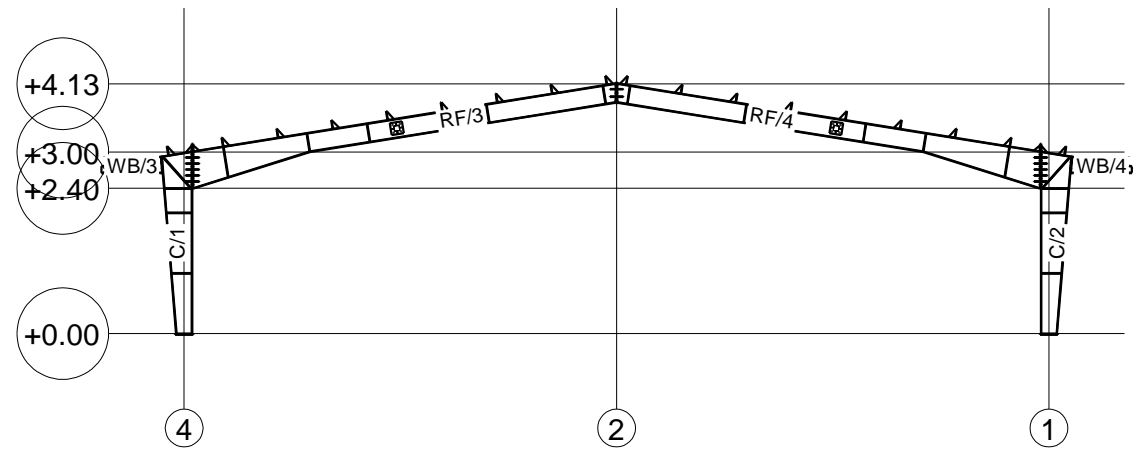
GRID A  
1:125



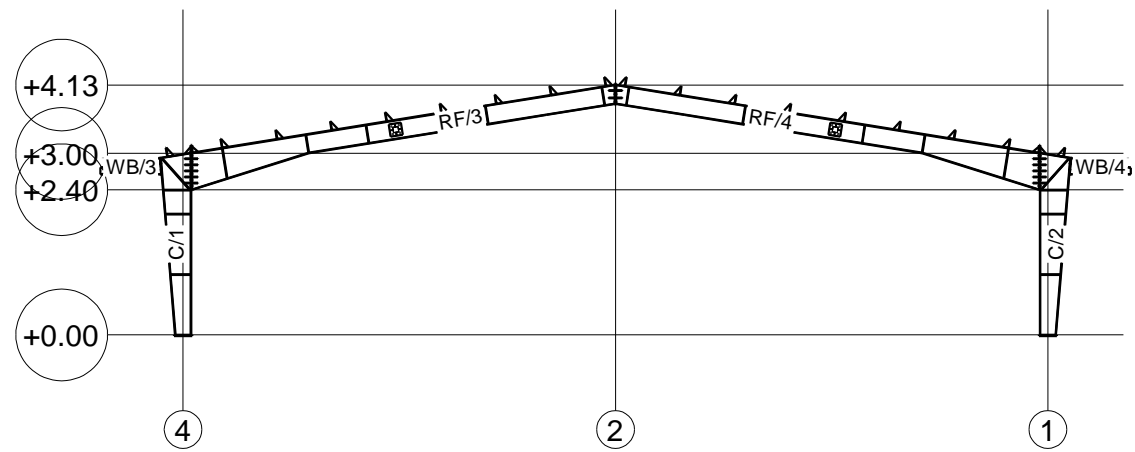
GRID D  
1:125



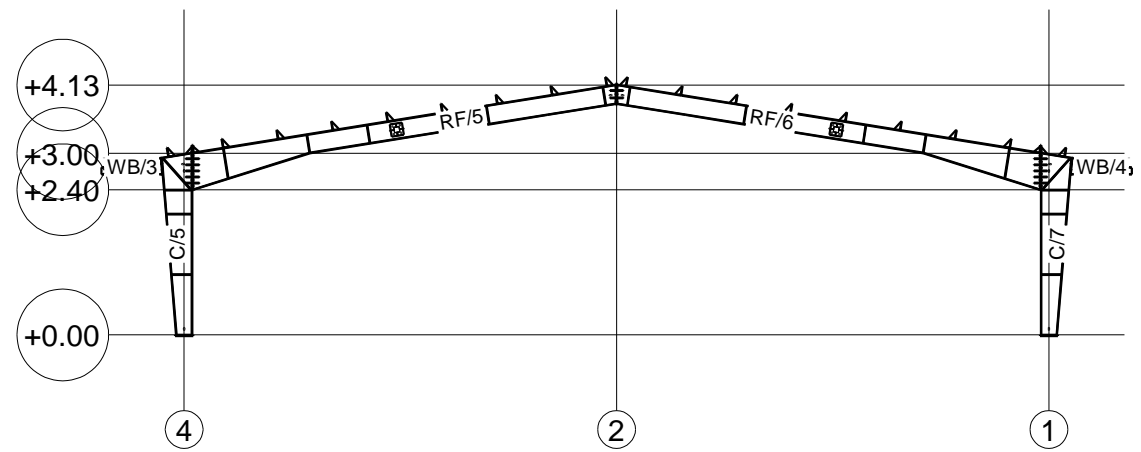
GRID B  
1:125



GRID E  
1:125

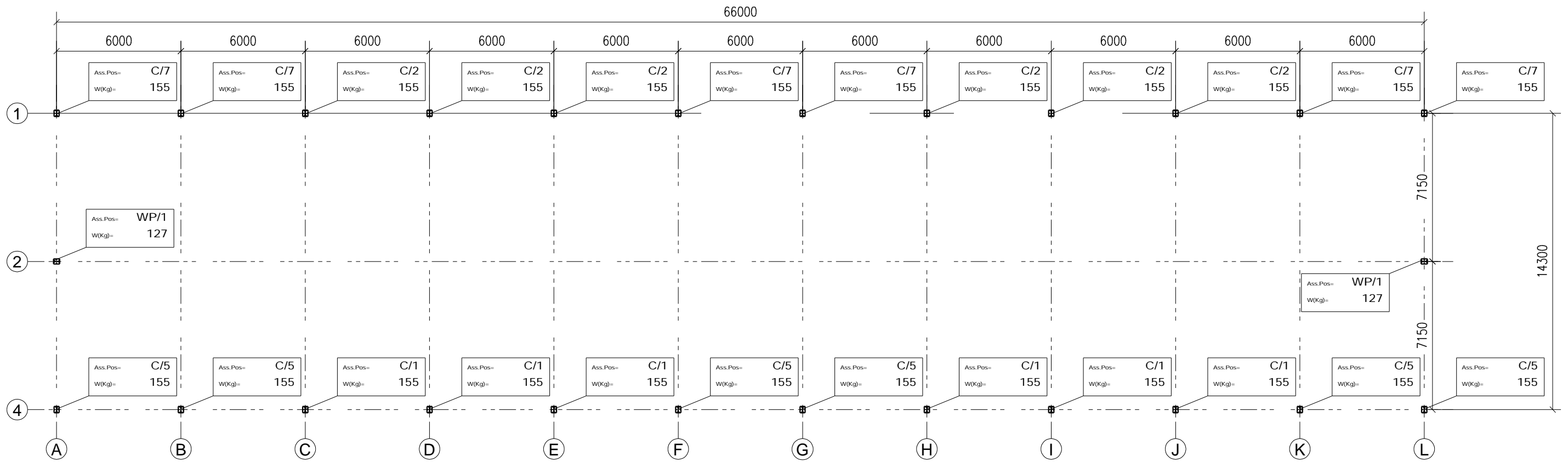


GRID C  
1:125

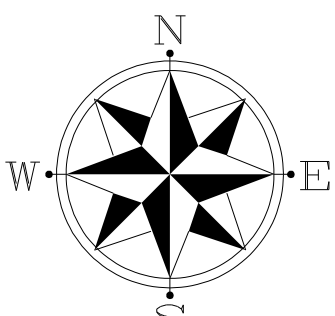


GRID F  
1:125

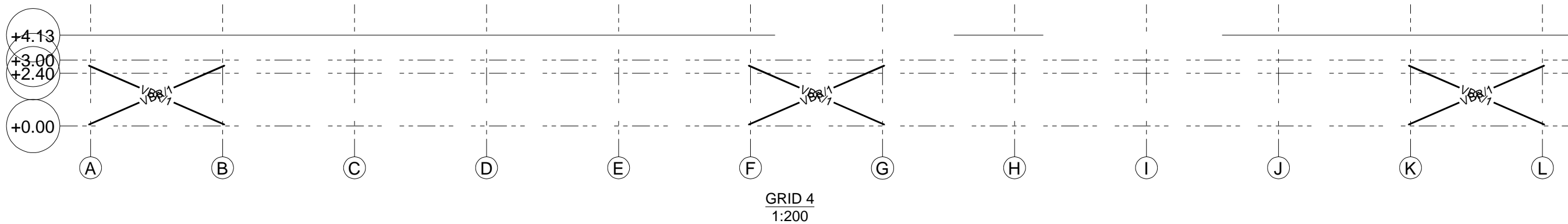
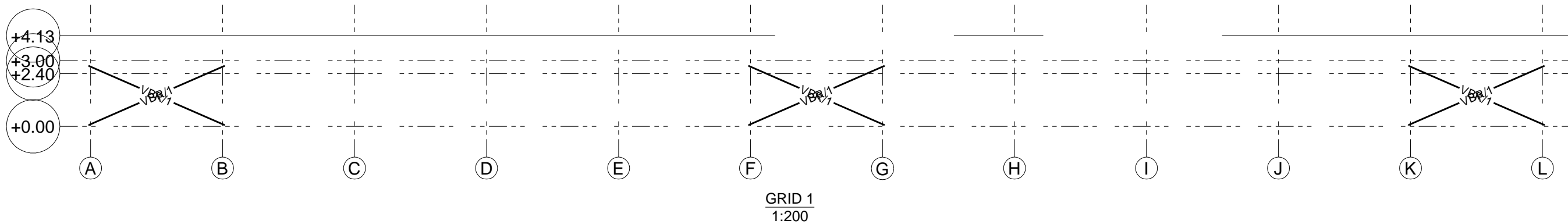
1	01	1395-05-30	Rad.Engineer	Rad.Engineer	Rad.Engineer
0	01	1395-05-27	Rad.Engineer	Rad.Engineer	Rad.Engineer
REV.	Phase Number:	Created date:	Modeled By:	Checked By:	Project Manager:
DESCRIPTION	PROJECT TITLE:			CONTRACTOR:	
SCALE:	سوله مرغداري آقاي دبيري				
N.T.S					
UNIT:	OWNER:			جناب آقاي دبيري	
mm					
FIELD:	CONSULTANT:				
Structure					
PHASE :	DRAWING TITLE:				
01	Grid A&B&C&D&E&F				
Project No.:		- PH. 01	R. 1	1/1	



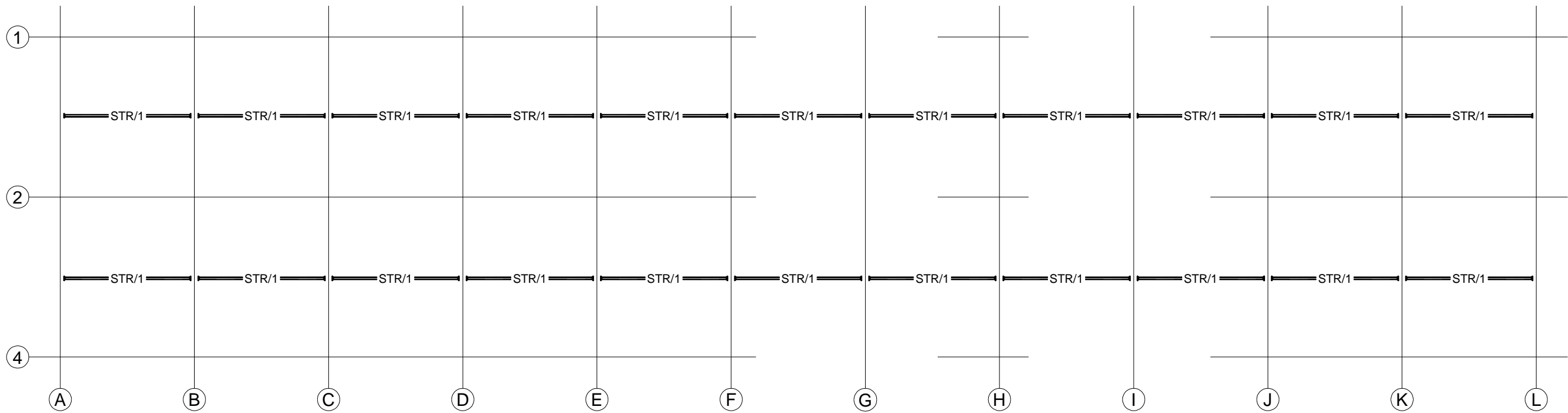
PLAN +0.00  
1:200



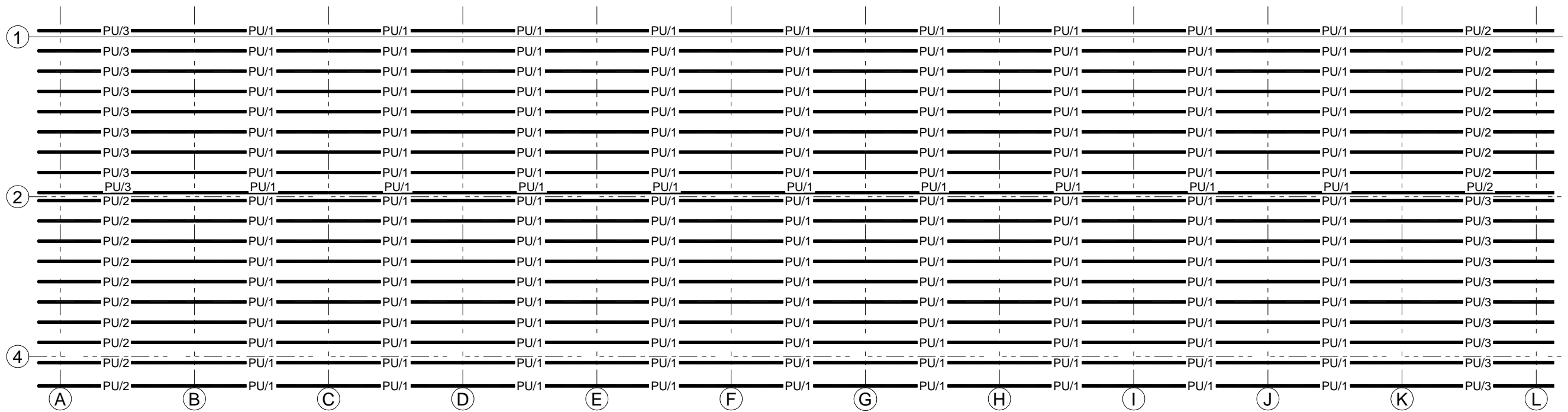
1	01	1395-05-30	Rad.Engineer	Rad.Engineer	Rad.Engineer
0	01	1395-05-27	Rad.Engineer	Rad.Engineer	Rad.Engineer
REV.	Phase Number:	Created date:	Modeled By:	Checked By:	Project Manager:
DESCRIPTION:	PROJECT TITLE:		CONTRACTOR:		
SCALE:	سوله مرغداری آفای دبیری				
N.T.S	OWNER:		جناب آفای دبیری		
UNIT:	mm		CONSULTANT:		
FIELD:	Structure		DRAWING TITLE:		
PHASE:	01		Collumn'S Key Plan		
Project No.:		- PH. 01	R. 1	1/1	



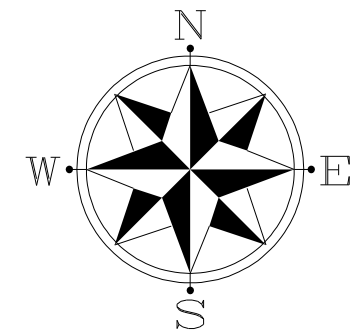
1	01	1395-05-30	Rad.Engineer	Rad.Engineer	Rad.Engineer
0	01	1395-05-27	Rad.Engineer	Rad.Engineer	Rad.Engineer
REV.	Phase Number:	Created date:	Modeled By:	Checked By:	Project Manager:
DESCRIPTION	PROJECT TITLE:			CONTRACTOR:	
SCALE:	سوله مرغداري آفابي دبيري				
N.T.S					
UNIT:	OWNER:			جناب آفابي دبيري	
mm					
FIELD:	CONSULTANT:				
Structure					
PHASE :	DRAWING TITLE:				
01	VBR				
Project No.:		- PH. 01	R. 1	1/1	



PLAN +4.13  
1:200



1:200



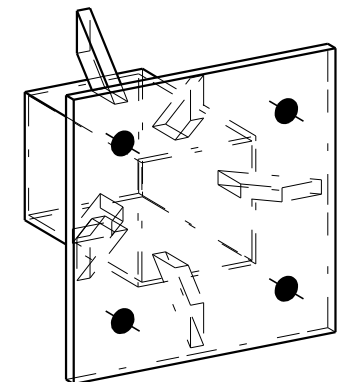
1	01	1395-05-30	Rad.Engineer	Rad.Engineer	Rad.Engineer
0	01	1395-05-27	Rad.Engineer	Rad.Engineer	Rad.Engineer
REV.	Phase Number:	Created date:	Modeled By:	Checked By:	Project Manager:
DESCRIPTION	PROJECT TITLE:			CONTRACTOR:	
SCALE:	سوله مرغداری آقای دبیری				
N.T.S	OWNER:			جناب آقای دبیری	
UNIT:	CONSULTANT:				
mm	DRAWING TITLE:				
FIELD:	STR&PU				
Structure	Project No.:			- PH. 01 R. 1 1/1	
PHASE :	01				



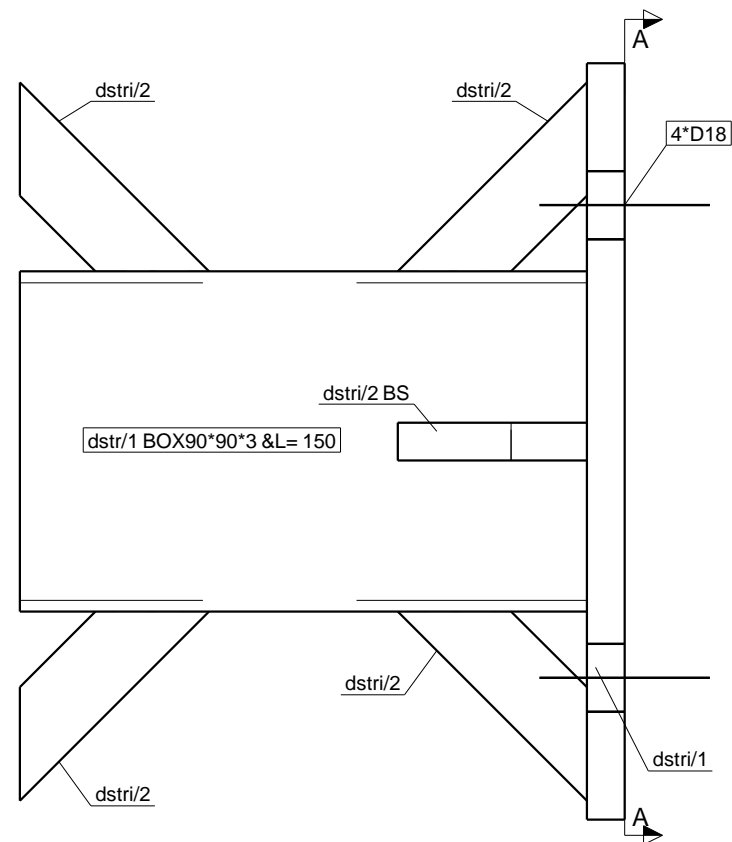


BILL OF MATERIAL

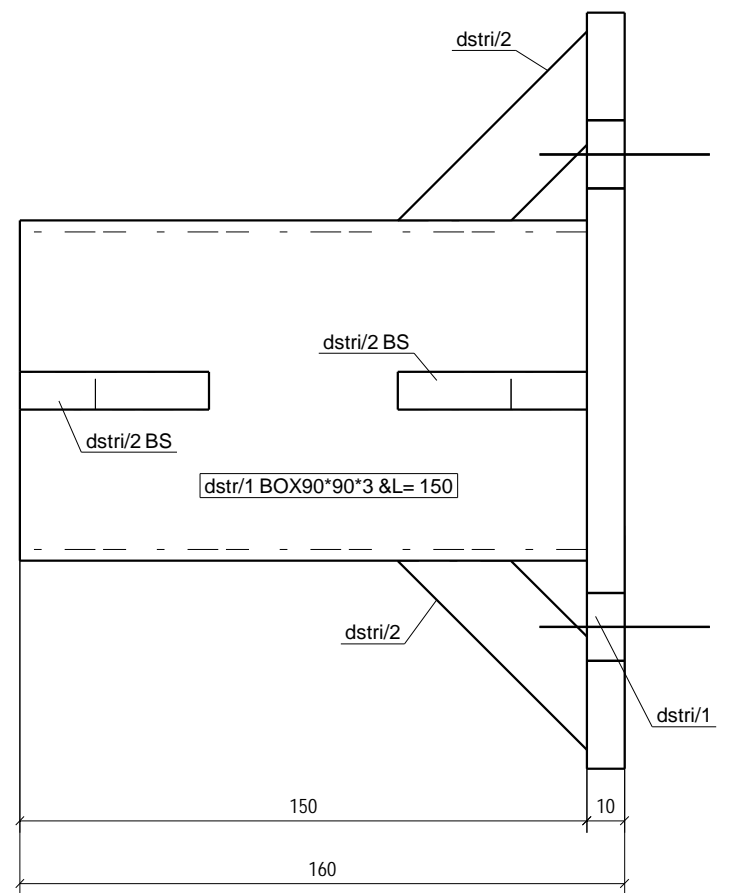
MATERIAL LIST FOR ONE ASSEMBLY				No. Required :	
Grid: <b>A/4-2</b>		<b>DSTR/1</b>		<b>44</b>	
Mark	Grade	Size	No	Length	Weight PC
dstr/1	ST37	BOX90*90*3	1	150	1.5
dstr/1	ST37	PL10*200	1	200	3.1
dstr/2	ST37	PL10*50	6	50	0.2
<b>TOTAL (kg)</b>					<b>5.8</b>



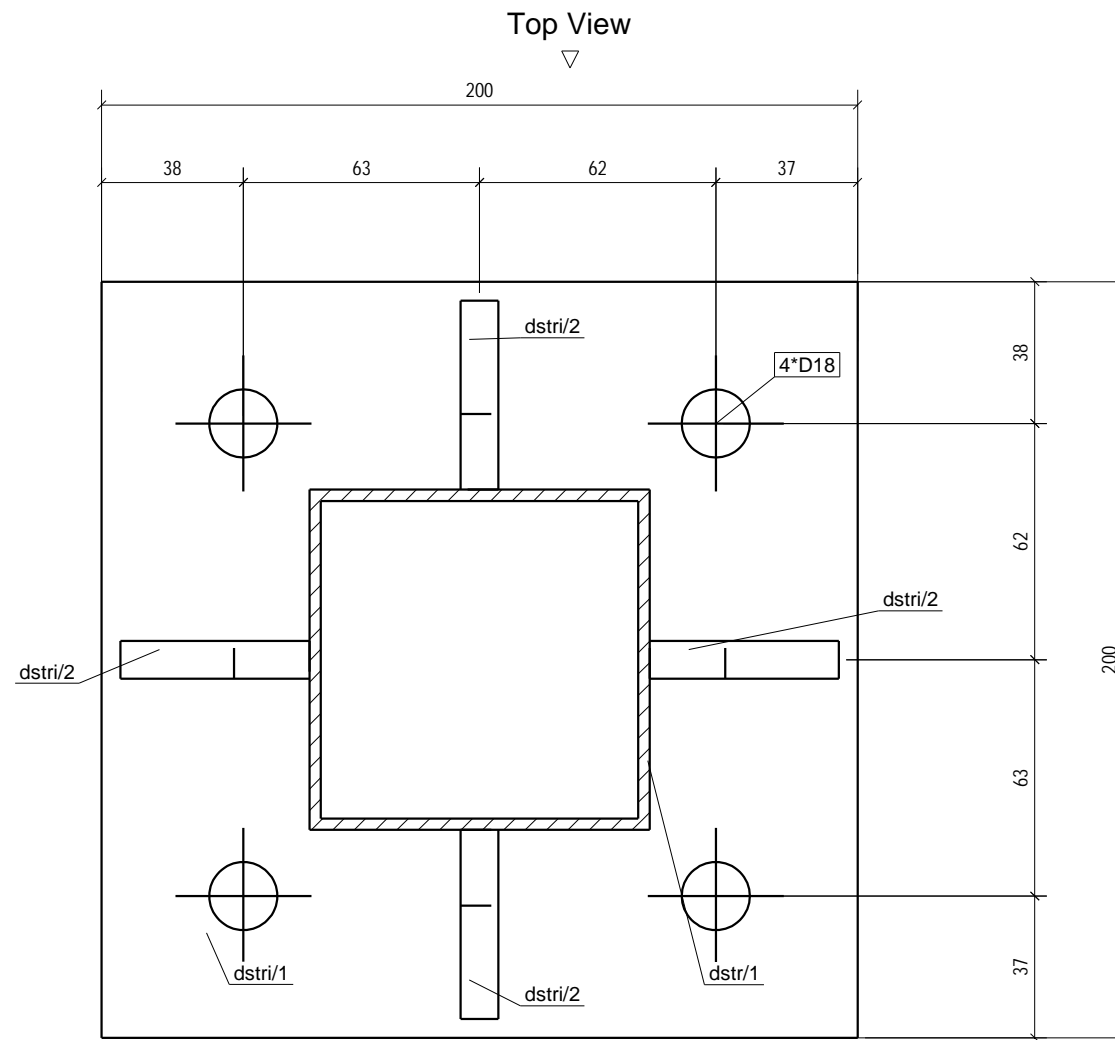
3D



Front View



Top View



Top View

Front View

A - A

GENERAL NOTES

- 1- جهات شمال و جنوب در ستونها، جهات جغرافیایی محل نصب میباشد.
- 2- جهت نصب حتما و فقط در قسمت بالای تیر علامت زده شود.
- 3- جوش ستونها یا پدستالها به بیس پلیت نفوذی است.

Legend:

Ici=Part 01-For Col-Intracacy	Iii=Part 01-For IPE Beams-Intracacy
IBI=Beam And 01Th Type At Part 01	ST=Stair
Ibi=Part 01-For Beams-Intracacy	LP=Loose Part
ICI=Collumns And 01 Th Type At Part 01	
Ii=Part 01-IPE Beam	

General Corner Welding Dimensions For Beams&Collumns

Sections	C.W.D	Sections	C.W.D	Sections	C.W.D	Sections	C.W.D	Sections	C.W.D	General Notes:	
CS1	20	CS6	15	PG41	6	PG48	6	PG09	6	PG97	8
CS1a	20	CS7	15	PG43	6	PG54	6	PG10	6	PG98	8
CS2	18	CS8	12	PG44	6	PG55	6	PG11	6	PG99	9
CS3	18	CS9	10	PG45	6	PG56	6	PG12	8	PG100	12
CS4	15	CS10	10	PG46	6	PG57	6	PG13	8	PG101	12
CS5	12	CS11	10	PG47	6	PG58	6	PG14	8	PG102	16

1	01	1395-05-30	Rad.Engineer	Rad.Engineer	Rad.Engineer
0	01	1395-05-27	Rad.Engineer	Rad.Engineer	Rad.Engineer

REV.	Phase Number:	Created date:	Modeled By:	Checked By:	Project Manager:
------	---------------	---------------	-------------	-------------	------------------

DESCRIPTION	PROJECT TITLE:	CONTRACTOR:
-------------	----------------	-------------

SCALE:	سوله مر غداري آقاي دبيري	
	N.T.S	

UNIT:	OWNER:	جناب آقاي دبيري
mm		

FIELD:	CONSULTANT:
Structure	

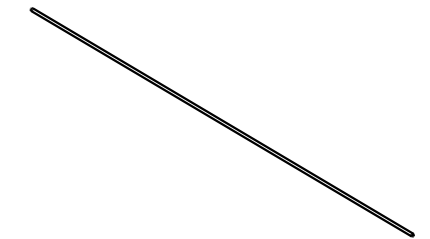
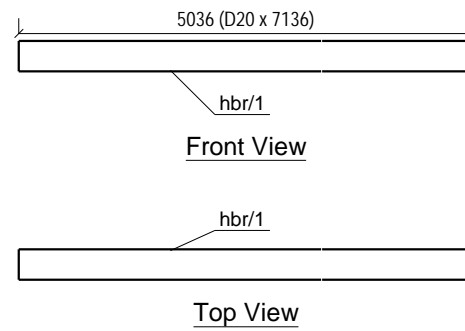
PHASE:	DRAWING TITLE:
01	DSTR/1

Project No.:	- PH. 01	R. 1	1/1
--------------	----------	------	-----



BILL OF MATERIAL

MATERIAL LIST FOR ONE ASSEMBLY				No. Required :	
Grid: <b>K-L/2-1</b>			<b>HBR/1</b>		<b>24</b>
Mark	Grade	Size	No	Length	Weight PC
hbr/1	ST37	D20	1	7136	15.8
<b>TOTAL (kg)</b>					<b>15.8</b>



3D

GENERAL NOTES

- 1- جهات شمال وجنوب درستونها، جهات جغرافیایی محل نصب میباشد.
- 2- جهت نصب حتما و فقط در قسمت بالای تیر علامت زده شود.
- 3- جوش ستونکها یا پدستالها به بیس پلیت نفوذی است.

Legend:

Ici=Part 01-For Col-Intracacy	Iii=Part 01-For IPE Beams-Intracacy
IBI=Beam And 01Th Type At Part 01	ST=Stair
Ibi=Part 01-For Beams-Intracacy	LP=Loose Part
ICI=Collumns And 01 Th Type At Part 01	
Ii=Part 01-IPE Beam	

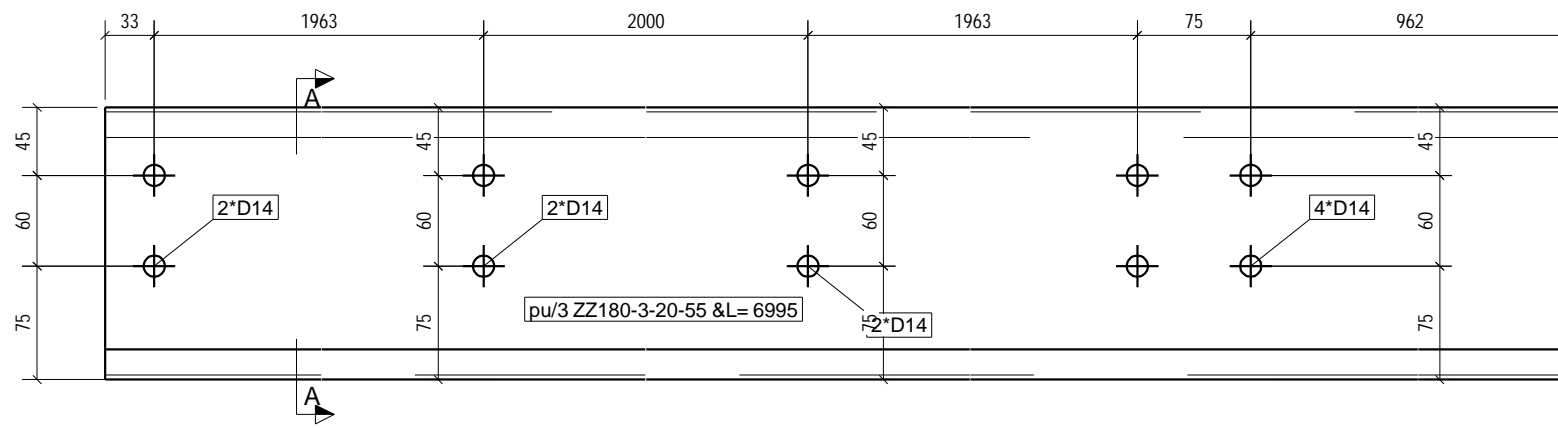
General Corner Welding Dimensions For Beams&Collumns

Sections	C.W.D	Sections	C.W.D	Sections	C.W.D	Sections	C.W.D	Sections	C.W.D	General Notes:	
CSI	20	CS6	15	PG41	6	PG48	6	PG09	6	PG97	8
CSII	20	CS7	15	PG43	6	PG54	6	PG10	6	PG98	8
CSII	18	CS8	12	PG44	6	PG55	6	PG11	6	PG99	9
CSII	18	CS9	10	PG45	6	PG56	6	PG14	8	PG10	12
CSII	15	CS10	10	PG46	6	PG57	6	PG15	8	PG11	12
CSII	12	CS11	10	PG47	6	PG58	6	PG16	8	PG118	16

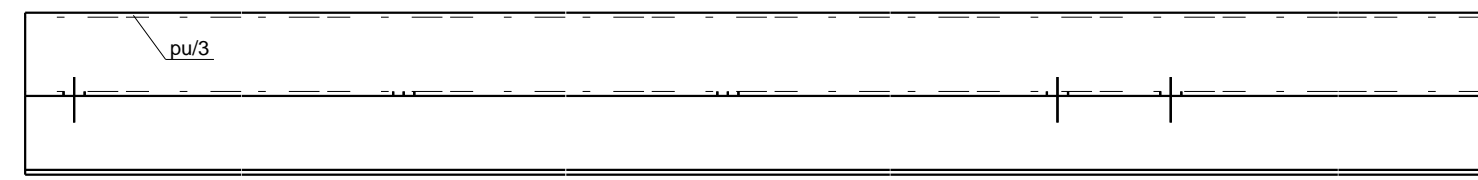
1	01	1395-05-30	Rad.Engineer	Rad.Engineer	Rad.Engineer
0	01	1395-05-27	Rad.Engineer	Rad.Engineer	Rad.Engineer

REV. Phase Number: Created date: Modeled By: Checked By: Project Manager:

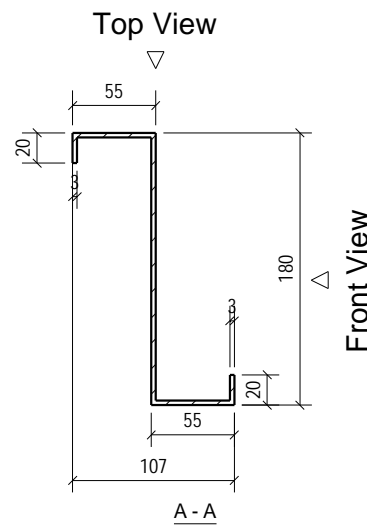
DESCRIPTION	PROJECT TITLE:	CONTRACTORE:
SCALE:	سوله مر غداري آقاي دبيري	
UNIT:	OWNER:	جناب آقاي دبيري
FIELD:	CONSULTANT:	
PHASE :	DRAWING TITLE:	
01	HBR/1	
Project No.:	- PH. 01	R. 1
		1/1



Front View



Top View

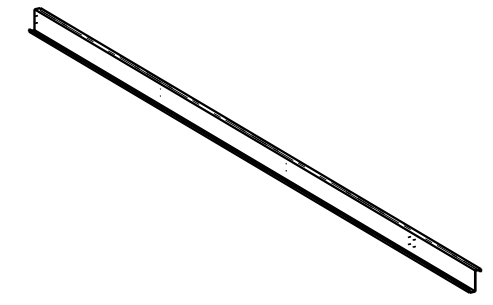


Front View

A - A

BILL OF MATERIAL

MATERIAL LIST FOR ONE ASSEMBLY			No. Required :		
Grid: <A-B/1>			PU/3		20
Mark	Grade	Size	No	Length	Weight PC
pu/3	ST37	ZZ180-3-20	1	6995	52.4
<b>TOTAL (kg)</b>					<b>52.4</b>



3D

GENERAL NOTES

- 1- جهات شمال وجنوب درستونها، جهات جغرافیایی محل نصب میباشد.
- 2- جهت نصب حتما و فقط در قسمت بالای تیر علامت زده شود.
- 3- جوش ستونها یا بدستالها به بیس پلیت نفوذی است.

Legend:

Ici=Part 01-For Col-Intracacy	Iii=Part 01-For IPE Beams-Intracacy
IBI=Beam And 01Th Type At Part 01	ST=Stair
Ibi=Part 01-For Beams-Intracacy	LP=Loose Part
ICI=Collumns And 01 Th Type At Part 01	
Ii=Part 01-IPE Beam	

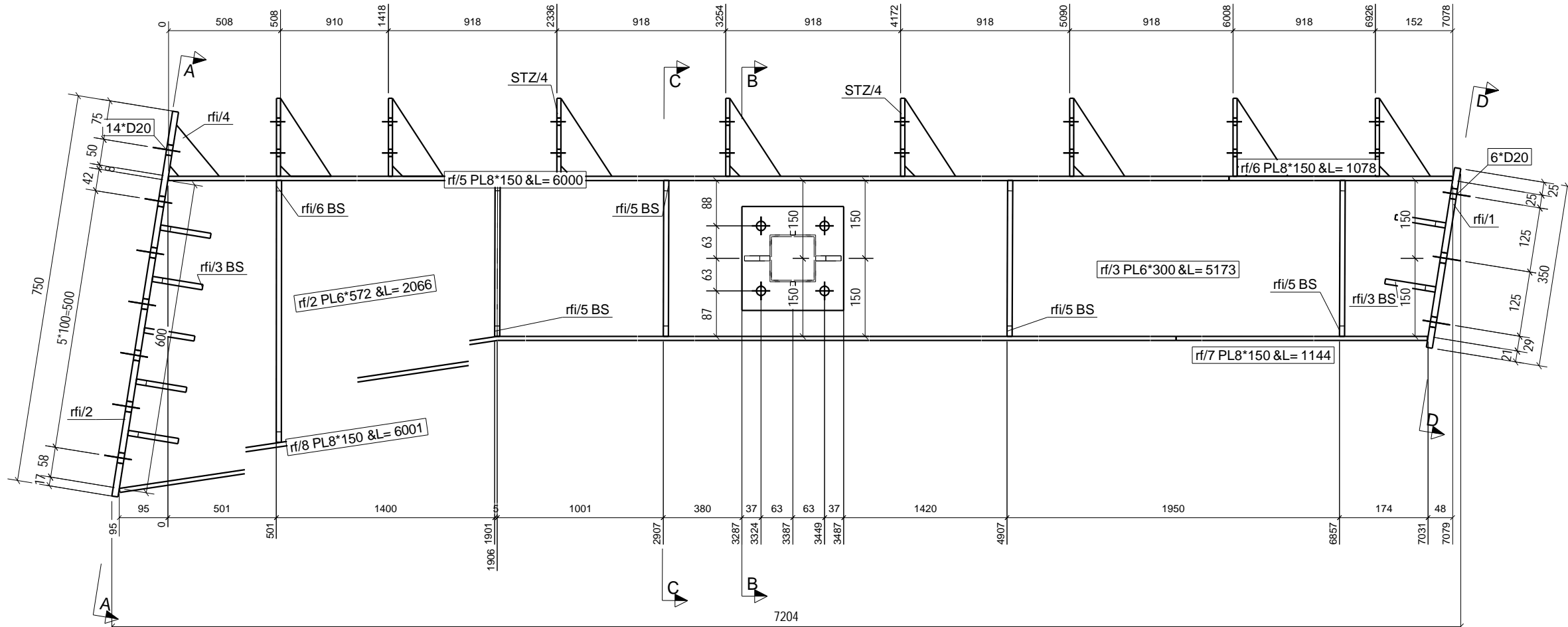
General Corner Welding Dimensions For Beams&Collumns

Sections	C.W.D	Sections	C.W.D	Sections	C.W.D	Sections	C.W.D	Sections	C.W.D	General Notes:
CSI 20	CS6 15	PG41 6	PG48 6	PG09 6	PG97 8					جوش باقی اتصالات با بعد هفت دهم ضخامت ورق نازکتر اجرا گردد.
CSI 20	CS7 15	PG43 6	PG54 6	PG10 6	PG98 8					
CSI 18	CS8 12	PG44 6	PG55 6	PG11 6	PG99 9					
CSI 18	CS9 10	PG45 6	PG56 6	PG12 8	PG10 12					
CSI 15	CS10 10	PG46 6	PG57 6	PG13 8	PG11 12					
CSI 12	CS11 10	PG47 6	PG58 6	PG14 8	PG118 16					

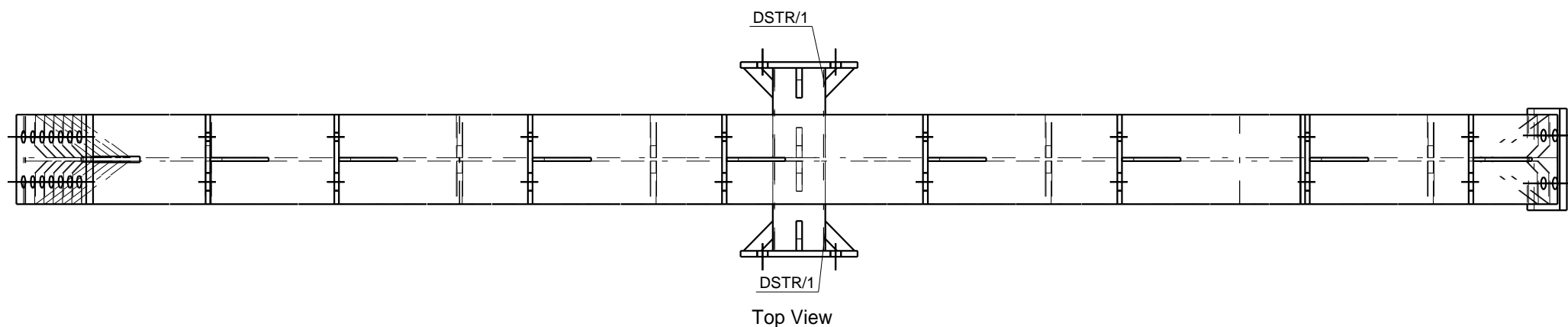
1	01	1395-05-30	Rad.Engineer	Rad.Engineer	Rad.Engineer
0	01	1395-05-27	Rad.Engineer	Rad.Engineer	Rad.Engineer

REV. Phase Number: Created date: Modeled By: Checked By: Project Manager:

DESCRIPTION:	PROJECT TITLE:	CONTRACTOR:
SCALE:	سوله مرغداري آقاي دبيري	
UNIT:	OWNER:	جناب آقاي دبيري
FIELD:	CONSULTANT:	
PHASE:	DRAWING TITLE:	
01	PU/3	
Project No.:	PH. 01	R. 1
		1/1



Front View



Top View

BILL OF MATERIAL

MATERIAL LIST FOR ONE ASSEMBLY No. Required :

Grid: C/2-1		RF/4		5	
Mark	Grade	Size	No	Length	Weight PC
rf/2	ST37	PL6*572	1	2066	55.7
rf/3	ST37	PL6*300	1	5173	73.1
rf/5	ST37	PL8*150	1	6000	56.5
rf/6	ST37	PL8*150	1	1078	10.2
rf/7	ST37	PL8*150	1	1144	10.8
rf/8	ST37	PL8*150	1	6001	56.5
rfi/1	ST37	PL12*170	1	350	5.6
rfi/2	ST37	PL12*150	1	750	10.6
rfi/3	ST37	PL10*72	14	100	0.6
rfi/4	ST37	PL10*61	1	130	0.6
rfi/5	ST37	PL10*72	8	300	1.7
rfi/6	ST37	PL10*72	2	504	2.8
DSTR/1	ASSEMBLY		2		5.8
STZ/4	ASSEMBLY		8		2.1
<b>TOTAL (kg)</b>					<b>335.3</b>

General Notes:

- 1 اتصال ستون به بیس پلایت با جوش نفوذی صورت میگیرد.
- 2 علامت نصب درزوی تیرها که به صورت علامت مثلثی رنگ نشان داده شده، بعد از رنگ حکما برزوی تیرها علامت زده شود.

Legend:

Ici=Part 01-For Col-Intricity	Iii=Part 01-For IPE Beams-Intricity
IBI=Beam And 01 Th Type At Part 01	ST=Stair
Ibi=Part 01-For Beams-Intricity	LP=Loose Part
ICI=Collumns And 01 Th Type At Part 01	
Ii=Part 01-IPE Beam	

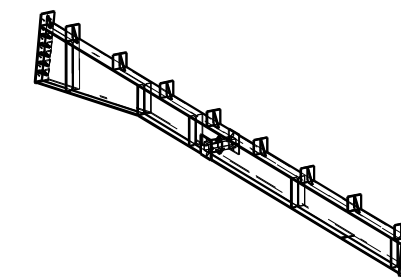
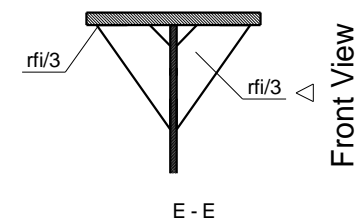
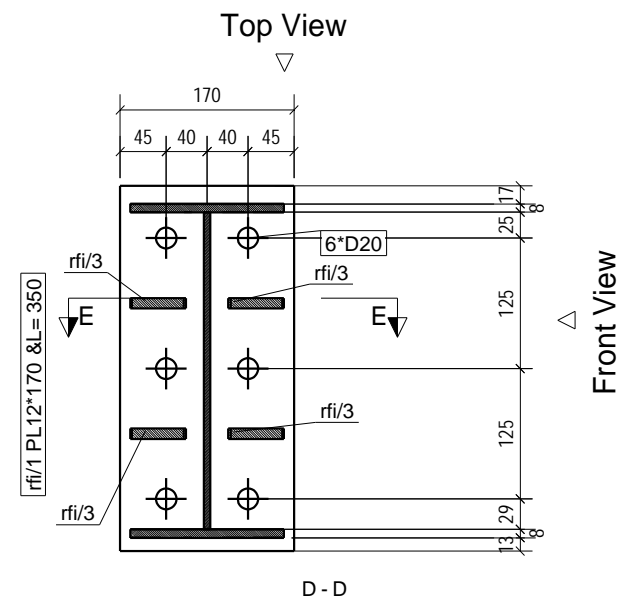
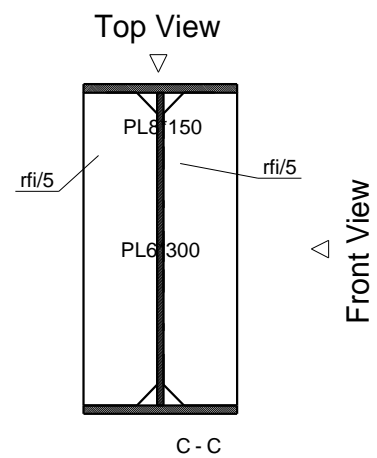
General Corner Welding Dimensions For Beams&Collumns

Sections	C.W.D	Sections	C.W.D	Sections	C.W.D	Sections	C.W.D	Sections	C.W.D	General Notes:
										باقی اتصالات با بعد هفت دهم ضخامت ورق جوش اجرا گردد.

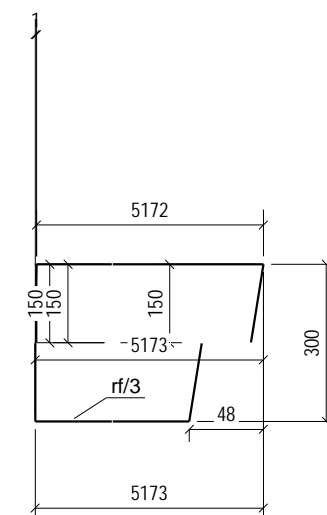
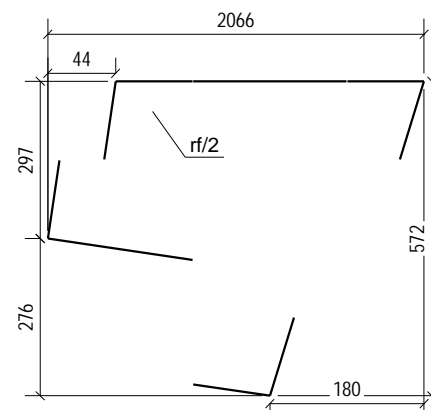
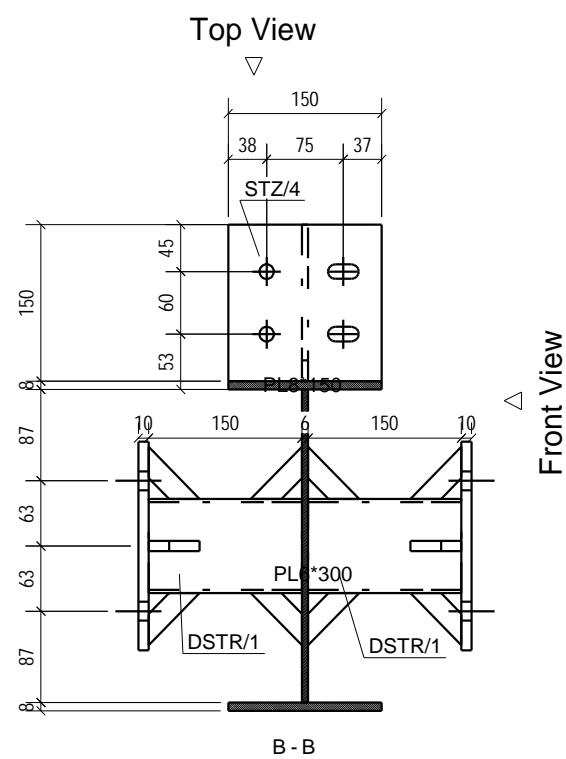
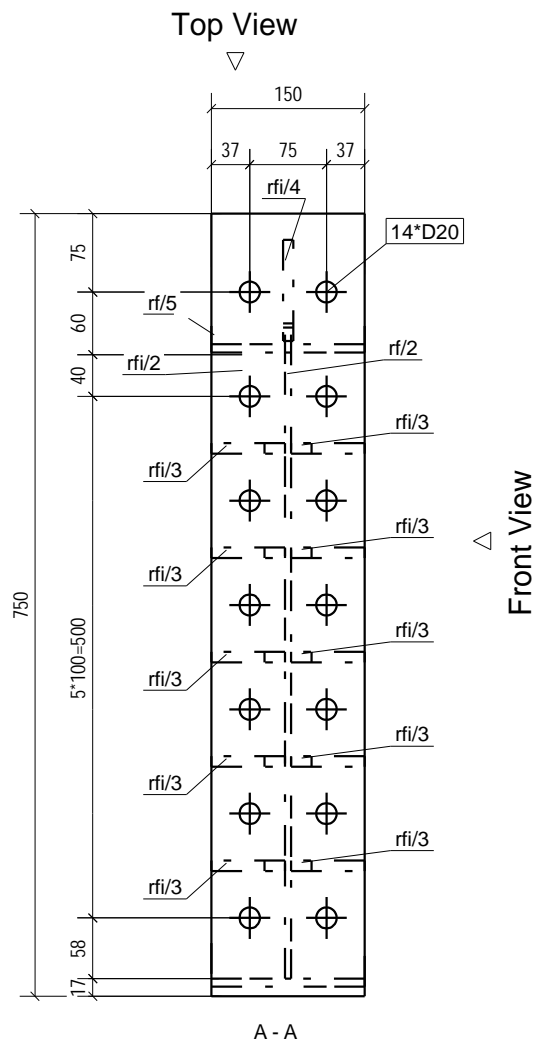
1	01	1395-05-30	Rad.Engineer	Rad.Engineer	Rad.Engineer
0	01	1395-05-27	Rad.Engineer	Rad.Engineer	Rad.Engineer

REV. Phase Number: Created date: Modeled By: Checked By: Project Manager:

DESCRIPTION:	PROJECT TITLE:	CONTRACTORE:
SCALE:	N.T.S	سوله مرعداري آقاي دبيري
UNIT:	mm	OWNER: جناب آقاي دبيري
FIELD:	Structure	CONSULTANT:
PHASE:	01	DRAWING TITLE: RF/4



3D



**General Notes:**

- 1 اتصال ستون به بیس پلایت یا جوش نفوذی صورت میگیرد.
- 2 علامت نصب درزوی تیرها که به صورت علامت مثلثی رنگ نشان داده شده، بعد از رنگ حکما بر روی تیرها علامت زده شود.

**Legend:**

lci=Part 01-For Col-Intracacy	lii=Part 01-For IPE Beams-Intracacy
lbi=Beam And 01 Th Type At Part 01	ST=Stair
lbi=Part 01-For Beams-Intracacy	LP=Loose Part
lci=Collumns And 01 Th Type At Part 01	
li=Part 01-IPE Beam	

**General Corner Welding Dimensions For Beams & Collumns**

Sections	C.W.D	Sections	C.W.D	Sections	C.W.D	Sections	C.W.D	Sections	C.W.D	General Notes:		
CS1	20	CS8	15	PG41	6	PG48	6	PG69	6	PG97	8	
CS12	20	CS7	15	PG43	6	PG54	6	PG510	6	PG98	8	جوش بانجی اتصالات با بعد
CS18	18	CS8	12	PG44	6	PG55	6	PG511	6	PG99	9	هفت دهم ضخامت
CS18	18	CS9	10	PG45	6	PG56	6	PG594	8	PG910	12	ورق نازکتر اجرا گردد.
CS4	15	CS10	10	PG46	6	PG67	6	PG95	8	PG911	12	
CS4	12	CS11	10	PG47	6	PG68	6	PG96	8	PG911S	16	

1	01	1395-05-30	Rad.Engineer	Rad.Engineer	Rad.Engineer
0	01	1395-05-27	Rad.Engineer	Rad.Engineer	Rad.Engineer

REV.	Phase Number:	Created date:	Modeled By:	Checked By:	Project Manager:
------	---------------	---------------	-------------	-------------	------------------

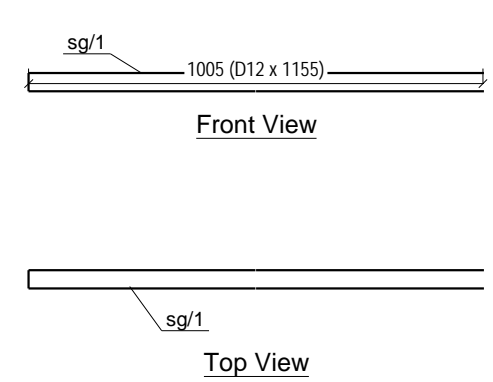
DESCRIPTION:	PROJECT TITLE:	CONTRACTORE:
SCALE:	سوله مرغداری آقای دبیری	
UNIT:	OWNER:	جناب آقای دبیری
FIELD:	CONSULTANT:	
PHASE:	DRAWING TITLE:	RF/4

Project No.:	PH. 01	R. 1	2/2
--------------	--------	------	-----

BILL OF MATERIAL

MATERIAL LIST FOR ONE ASSEMBLY					No. Required :
Grid: <b>A-B/A-4</b>			<b>SG/1</b>	<b>44</b>	
Mark	Grade	Size	No	Length	Weight PC
sg/1	ST37	D12	1	1155	0.9
<b>TOTAL (kg)</b>					<b>0.9</b>

3D



GENERAL NOTES

- 1- جهات شمال و جنوب درستونها، جهات جغرافیایی محل نصب میباشد.
- 2- جهت نصب حتما و فقط در قسمت بالای تیر علامت زده شود.
- 3- جوش ستونها یا بدستالها به بیس پلیت نفوذی است.

Legend:

Ici=Part 01-For Col-Intracacy	Iii=Part 01-For IPE Beams-Intracacy
IBI=Beam And 01Th Type At Part 01	ST=Stair
Ibi=Part 01-For Beams-Intracacy	LP=Loose Part
IC1=Collumns And 01 Th Type At Part 01	
Ii=Part 01-IPE Beam	

General Corner Welding Dimensions For Beams&Collumns

Sections	C.W.D	Sections	C.W.D	Sections	C.W.D	Sections	C.W.D	Sections	C.W.D	General Notes:	
CS1	20	CS6	15	PG41	6	PG48	6	PG09	6	PG97	8
CS1a	20	CS7	15	PG43	6	PG54	6	PG10	6	PG98	8
CS2	18	CS8	12	PG44	6	PG55	6	PG11	6	PG99	9
CS3	18	CS9	10	PG45	6	PG56	6	PG14	8	PG10	12
CS4	15	CS10	10	PG46	6	PG57	6	PG15	8	PG11	12
CS5	12	CS11	10	PG47	6	PG58	6	PG16	8	PG118	16

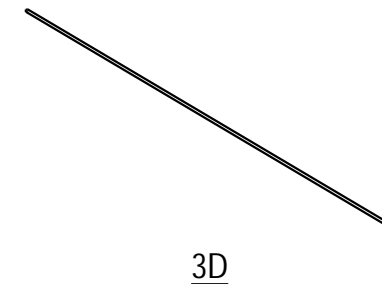
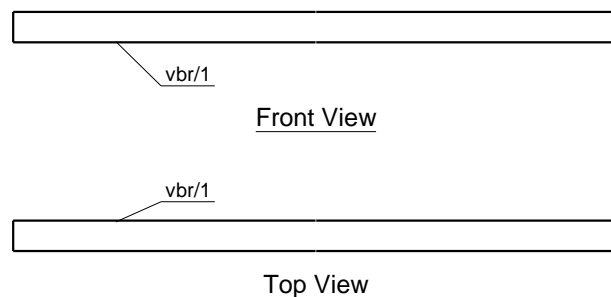
1	01	1395-05-30	Rad.Engineer	Rad.Engineer	Rad.Engineer
0	01	1395-05-27	Rad.Engineer	Rad.Engineer	Rad.Engineer

REV. Phase Number: Created date: Modeled By: Checked By: Project Manager:

DESCRIPTION	PROJECT TITLE:	CONTRACTORE:
SCALE:	سوله مر غداري آقاي دبيري	
UNIT:	OWNER:	جناب آقاي دبيري
FIELD:	CONSULTANT:	
PHASE:	DRAWING TITLE:	
01	SG/1	
Project No.:	- PH. 01	R. 1
		1/1

BILL OF MATERIAL

MATERIAL LIST FOR ONE ASSEMBLY					No. Required :
Grid: <b>A-B/1</b>			<b>VBR/1</b>		<b>12</b>
Mark	Grade	Size	No	Length	Weight PC
vbr/1	ST37	D20	1	6740	15.0
<b>TOTAL (kg)</b>					<b>15.0</b>



GENERAL NOTES

- 1- جهات شمال و جنوب درستونها، جهات جغرافیایی محل نصب میباشد.
- 2- جهت نصب حتما و فقط در قسمت بالای تیر علامت زده شود.
- 3- جوش ستونها یا بدستالها به بیس پلیت نفوذی است.

Legend:

Ici=Part 01-For Col-Intracacy	Iii=Part 01-For IPE Beams-Intracacy
IBI=Beam And 01Th Type At Part 01	ST=Stair
Ibi=Part 01-For Beams-Intracacy	LP=Loose Part
IC1=Collumns And 01 Th Type At Part 01	
Ii=Part 01-IPE Beam	

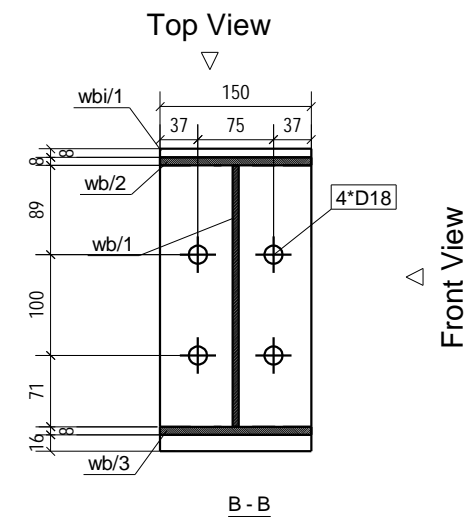
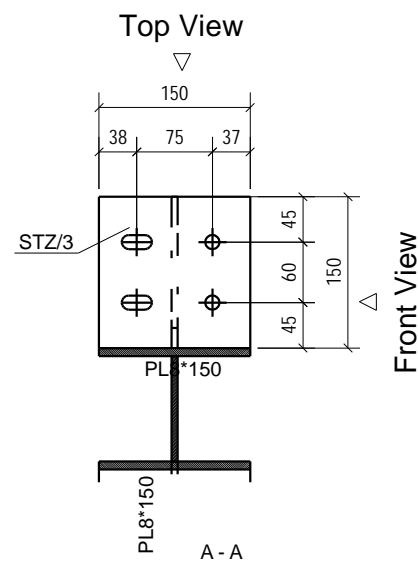
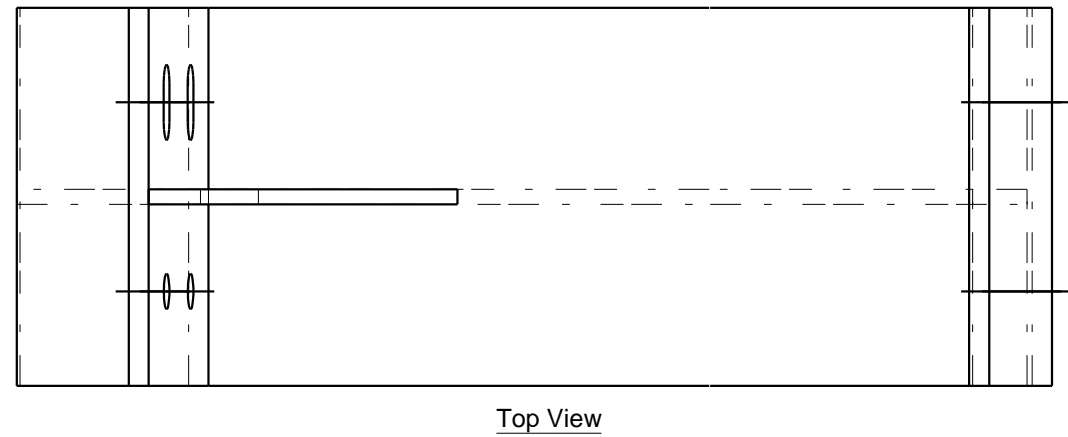
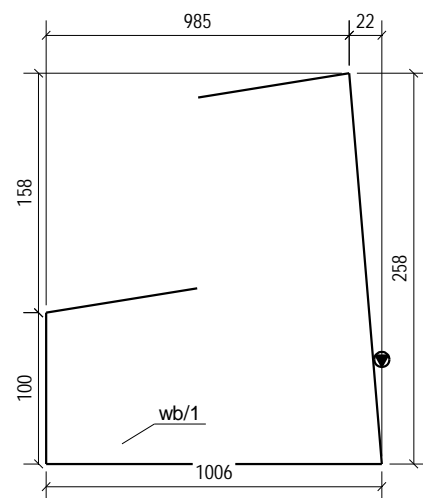
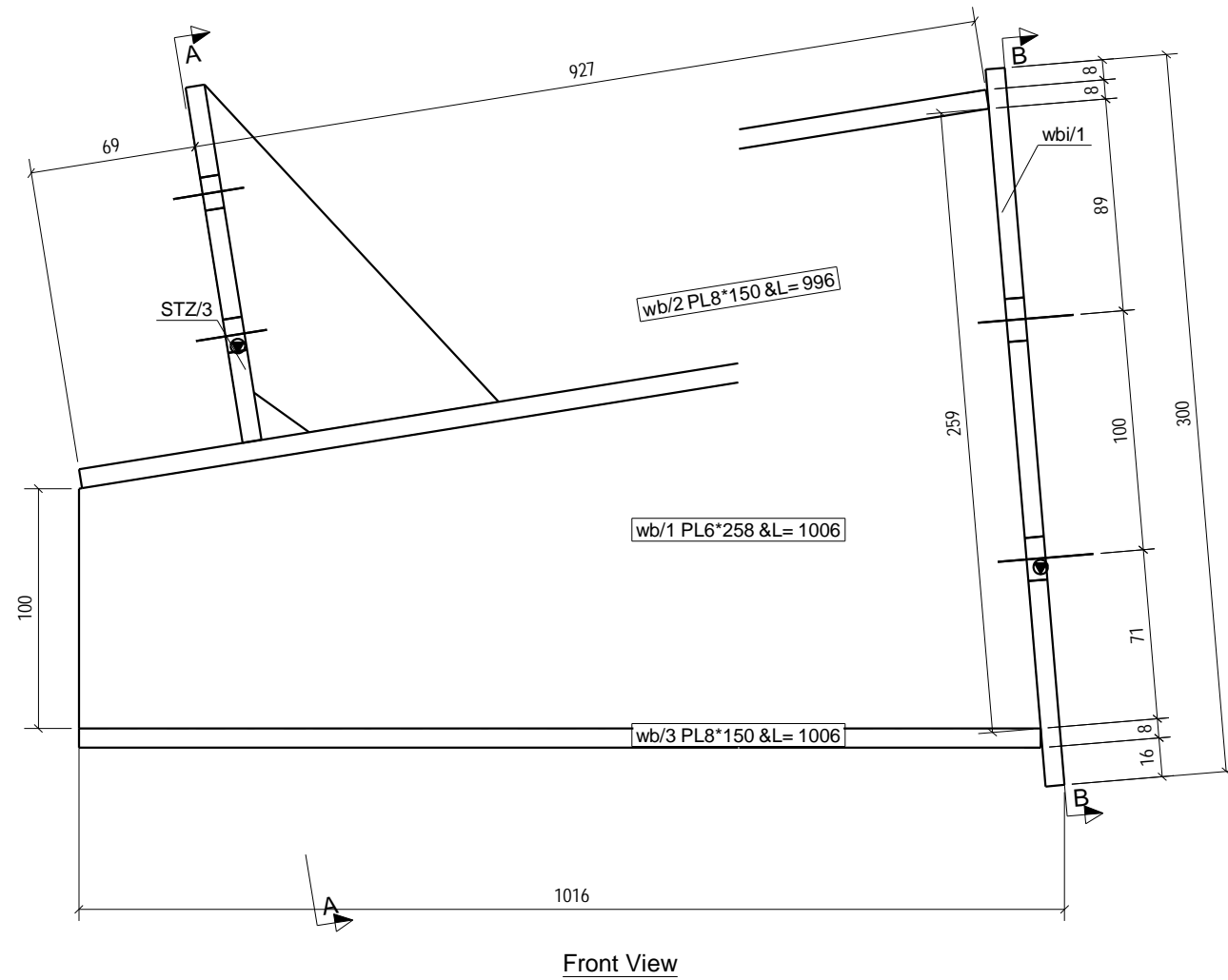
General Corner Welding Dimensions For Beams&Collumns

Sections	C.W.D	Sections	C.W.D	Sections	C.W.D	Sections	C.W.D	Sections	C.W.D	General Notes:	
CS1	20	CS6	15	PG41	6	PG48	6	PG09	6	PG97	8
CS1a	20	CS7	15	PG43	6	PG54	6	PG10	6	PG98	8
CS2	18	CS8	12	PG44	6	PG55	6	PG11	6	PG99	9
CS3	18	CS9	10	PG45	6	PG56	6	PG14	8	PG10	12
CS4	15	CS10	10	PG46	6	PG57	6	PG15	8	PG11	12
CS5	12	CS11	10	PG47	6	PG58	6	PG16	8	PG118	16

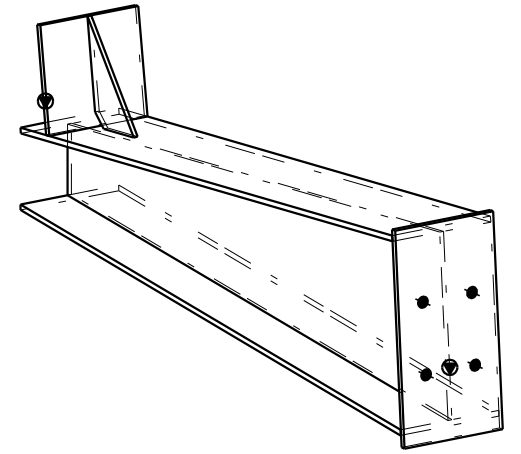
1	01	1395-05-30	Rad.Engineer	Rad.Engineer	Rad.Engineer
0	01	1395-05-27	Rad.Engineer	Rad.Engineer	Rad.Engineer

REV. Phase Number: Created date: Modeled By: Checked By: Project Manager:

DESCRIPTION	PROJECT TITLE:	CONTRACTORE:
SCALE:	سوله مر غداري آقاي دبيري	
UNIT:	OWNER:	جناب آقاي دبيري
FIELD:	CONSULTANT:	
PHASE :	DRAWING TITLE:	
01	VBR/1	
Project No.:	- PH. 01	R. 1
		1/1



BILL OF MATERIAL					
MATERIAL LIST FOR ONE ASSEMBLY					No. Required :
Grid: <b>L/A-4</b>		<b>WB/1</b>		<b>3</b>	
Mark	Grade	Size	No	Length	Weight PC
wb/1	ST37	PL6*258	1	1006	12.2
wb/2	ST37	PL8*150	1	996	9.4
wb/3	ST37	PL8*150	1	1006	9.5
wbi/1	ST37	PL8*150	1	300	2.8
STZ/1	ASSEMBLY			1	2.1
<b>TOTAL (kg)</b>					<b>36.1</b>



3D

**GENERAL NOTES**

- 1- جهات شمال و جنوب در ستونها، جهات جغرافیایی محل نصب میباشد.
- 2- جهت نصب حتما و فقط در قسمت بالای تیر علامت زده شود.
- 3- جوش ستونها یا پدستالها به بیس پلیت نفوذی است.

**Legend:**

Ici=Part 01-For Col-Intricity	Iii=Part 01-For IPE Beams-Intricity
IBI=Beam And 01 Th Type At Part 01	ST=Stair
Ibi=Part 01-For Beams-Intricity	LP=Loose Part
IC1=Columns And 01 Th Type At Part 01	
Ii=Part 01-IPE Beam	

**General Corner Welding Dimensions For Beams&Columns**

Sections	C.W.D	Sections	C.W.D	Sections	C.W.D	Sections	C.W.D	Sections	C.W.D	General Notes:		
CS1	20	CS6	15	PG41	6	PG48	6	PG09	6	PG97	8	جوش باقی اتصالات با بعد هفت دهم ضخامت ورق نازکتر اجرا گردد.
CS1a	20	CS7	15	PG43	6	PG54	6	PG10	6	PG98	8	
CS2	18	CS8	12	PG44	6	PG55	6	PG11	6	PG99	9	
CS3	18	CS9	10	PG45	6	PG56	6	PG14	8	PG10	12	
CS4	15	CS10	10	PG46	6	PG57	6	PG15	8	PG11	12	
CS5	12	CS11	10	PG47	6	PG58	6	PG16	8	PG118	16	

1	01	1395-05-30	Rad.Engineer	Rad.Engineer	Rad.Engineer
0	01	1395-05-27	Rad.Engineer	Rad.Engineer	Rad.Engineer
REV.	Phase Number:	Created date:	Modeled By:	Checked By:	Project Manager:

DESCRIPTION	PROJECT TITLE:	CONTRACTOR:
SCALE:	سوله مرغداري آقاي دبيري	
UNIT:	OWNER:	جناب آقاي دبيري
FIELD:	CONSULTANT:	
PHASE:	DRAWING TITLE:	
01	WB/1	
Project No.:	PH. 01	R. 1
		1/1