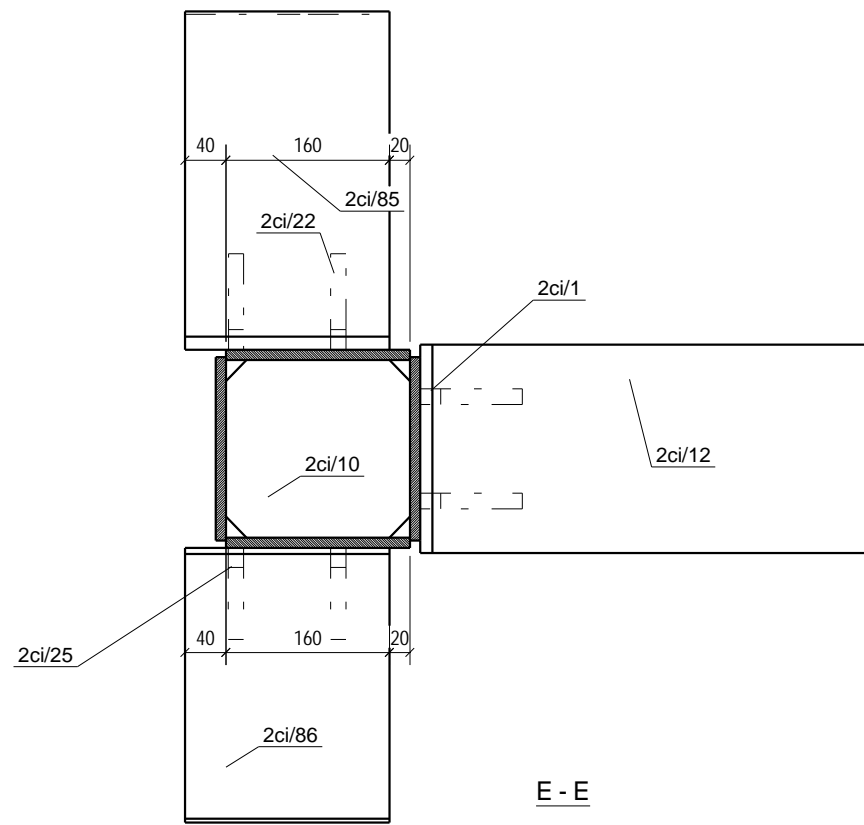
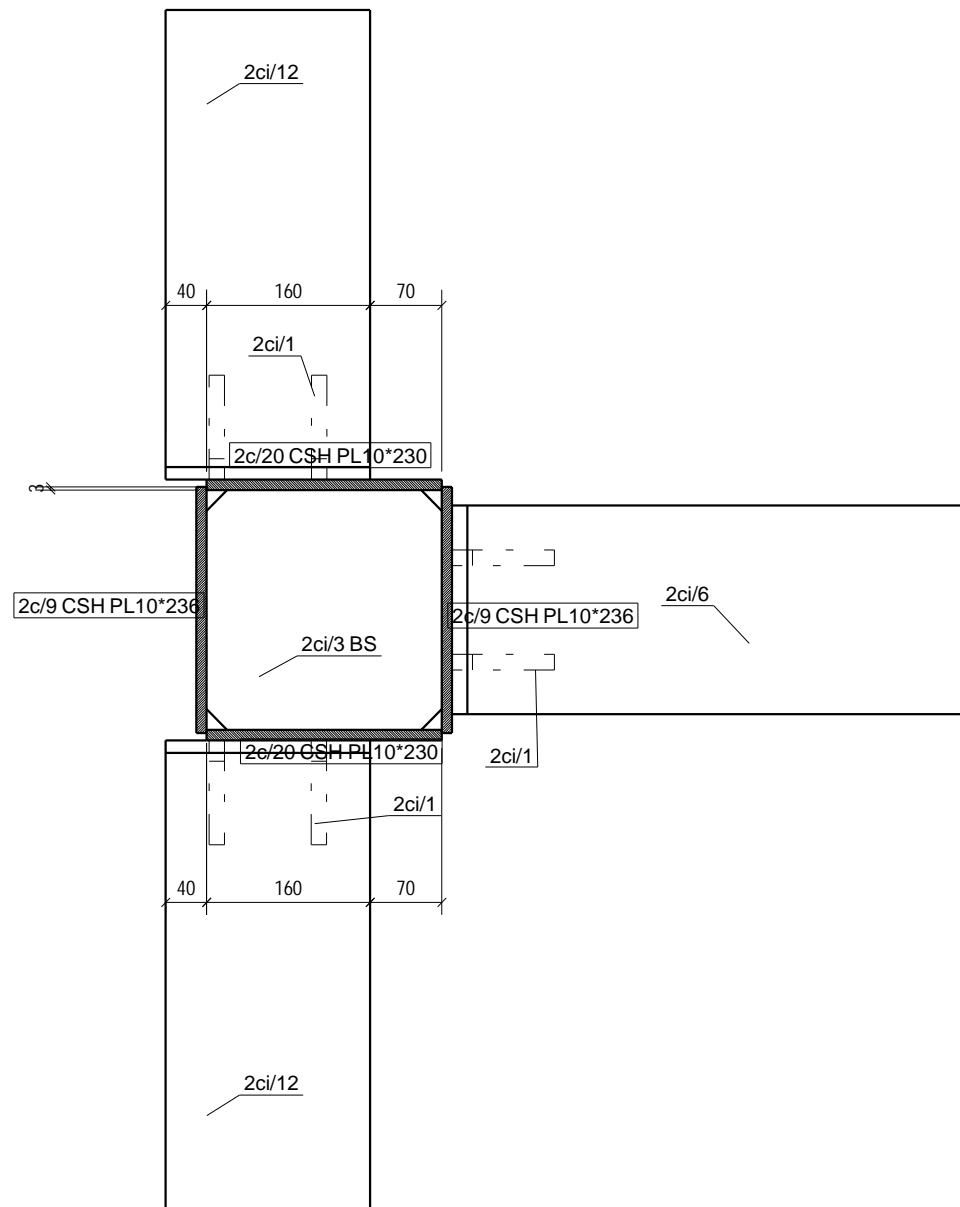


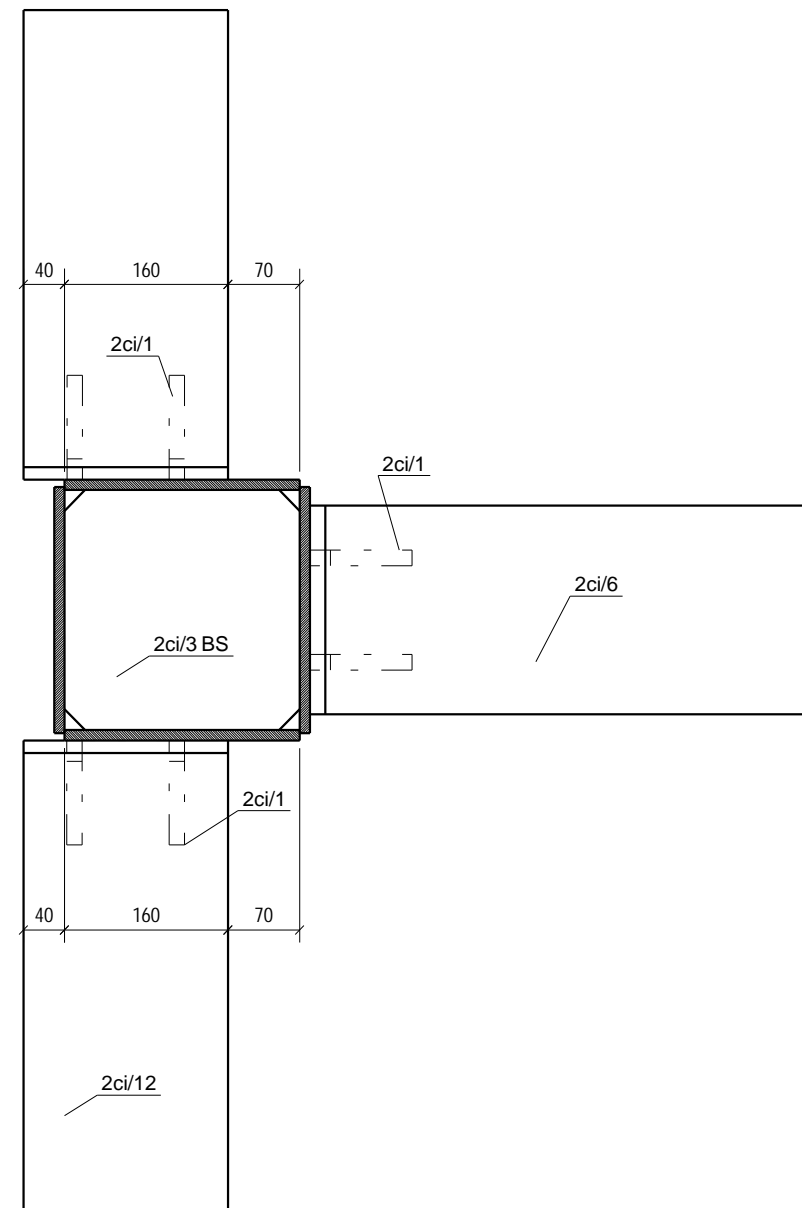
D - D



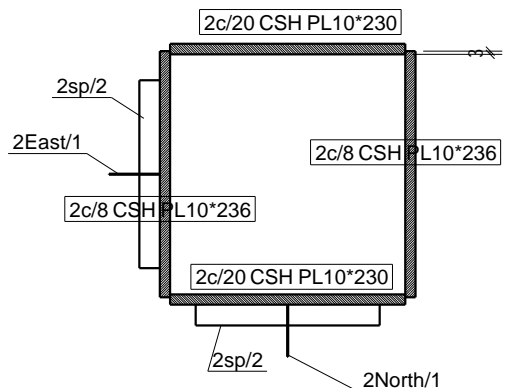
E - E



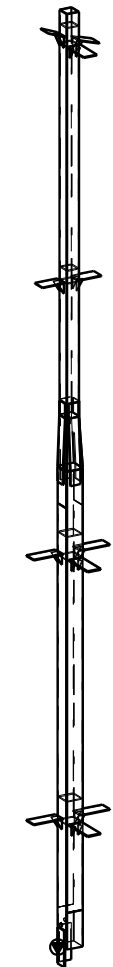
B - B



C - C



A - A



3D

General Notes:

- 1- فاصله زیراتر برشگیرهای ستونها هر 20 سانتیمتر می باشد که اکس برشگیرها در اکس ستون اجرا میگردند .
- 2- فاصله پشت تا پشت برشگیرهای تیرها نیز در هر 20 سانتیمتر میباشد.
- 3- اتصال ستون به بیس پلنت با جوش گوشه دورتادور صورت میگیرد.
- 4- علامت نصب درزوی تیرها که به صورت علامت مثنی رنگ نشان داده شده، بعد از رنگ حما برزوی تیرها علامت زده شود.


Legend:

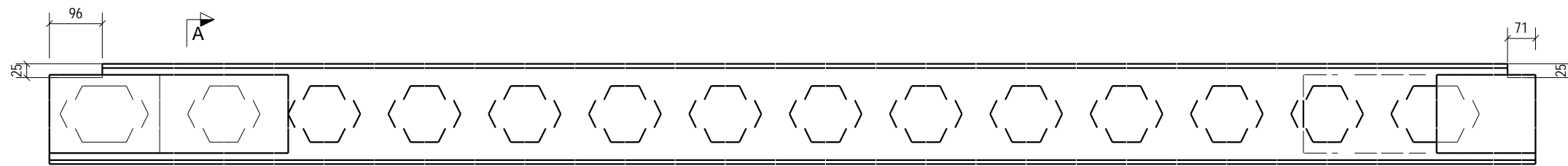
ICI=Part 01-For Col-Intracacy	Iii=Part 01-For IPE Beams-Intracacy
IBI=Beam And 01Th Type At Part 01	ST=Stair
Ibi=Part 01-For Beams-Intracacy	LP=Loose Part
IC1=Columns And 01 Th Type At Part 01	
Ii=Part 01-IPE Beam	

General Corner Welding Dimensions For Beams&Columns

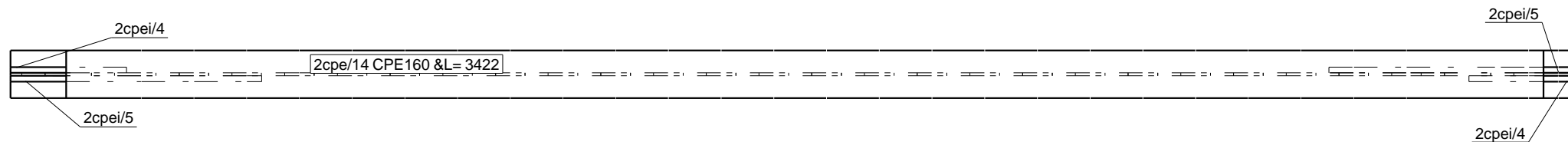
Sections	E.W.D	Sections	E.W.D	Sections	E.W.D	Sections	E.W.D	General Notes:
CSA	10	CSG	10					باقی اتصالات با بعد
CSB	10	PGT	8					هفت دهم ضخامت
CSF	10	PEB	8					ورق جوش اجرا گردد.
CSF	10	PEB	8					
CSF	10	PEB	8					

0	02	1394-07-13	Rad.Engineer	Rad.Engineer	Rad.Engineer
REV.	Phase Number:	Created date:	Modeled By:	Checked By:	Project Manager:

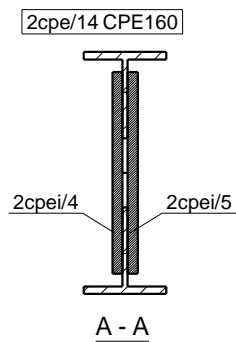
DESCRIPTION	PROJECT TITLE:	
SCALE:	مسکونی آقای محمود خانی	
UNIT:	OWNER:	سیلان سوله اردبیل
FIELD:	CONSULTANT:	آقای محمد محمودخانی
PHASE:	DRAWING TITLE:	گروه مهندسی بالار
02	2C7/1	



Front View



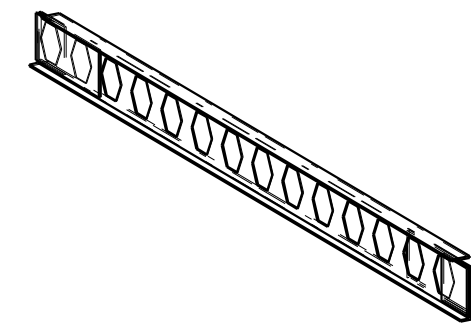
Top View



A - A

BILL OF MATERIAL

MATERIAL LIST FOR ONE ASSEMBLY				No. Required :
2CPE160/2				6
Mark	Size	No	Length	Weight PC
2cpei/14	CPE160	1	3422	54.0
2cpei/4	PL10*200	2	200	3.1
2cpei/5	PL10*200	2	500	7.9
TOTAL (kg)				75.9



3D

GENERAL NOTES

- تکات مهم:
- جهت نصب بر روی تیر حتما علامت زده شود.
 - نویز پارت های دوسر تیرها در محل پروژه و حین نصب اجرا میگردند.

Legend:

lci=Part 01-For Col-Intracacy	lii=Part 01-For IPE Beams-Intracacy
lB1=Beam And 01 Th Type At Part 01	ST=Stair
lbi=Part 01-For Beams-Intracacy	LP=Loose Part
lC1=Collumns And 01 Th Type At Part 01	
li=Part 01-IPE Beam	

General Corner Welding Dimensions For Beams&Collumns

Section	C.W.D/Sections	C.W.D/Sections	C.W.D/Sections	C.W.D/Sections	C.W.D/Sections	C.W.D/Sections	C.W.D/Sections	General Notes:
CSA 10	CSG 10							بافی اتصالات با پد هفت دهم ضخامت ورق جوش اجرا گردد.
CSE 10	FGI 8							
CSC 10	FGI 8							
CSD 10	FGI 8							
CSE 10	FGI 8							

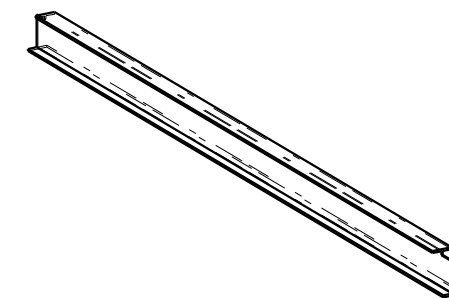
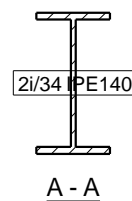
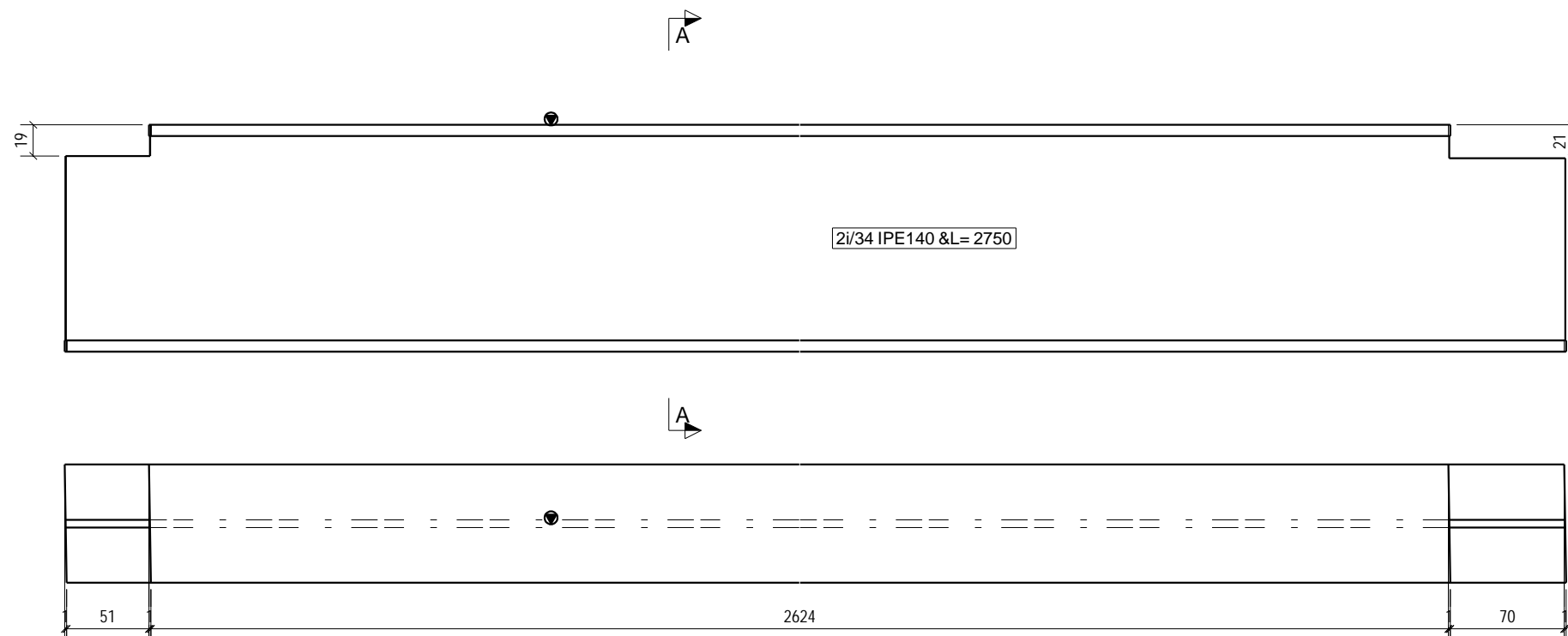
0	02	1394-07-13	Rad.Engineer	Rad.Engineer	Rad.Engineer
REV.	Phase Number:	Created date:	Modeled By:	Checked By:	Project Manager:

DESCRIPTION:	PROJECT TITLE:	
SCALE:	مسکونی آقای محمود خانی	
UNIT:	OWNER:	آقای محمد محمودخانی
FIELD:	CONSULTANT:	گروه مهندسی بالار
PHASE:	DRAWING TITLE:	
02		

Project No.:	- PH. 02	R. 0	1/1
--------------	----------	------	-----

BILL OF MATERIAL

MATERIAL LIST FOR ONE ASSEMBLY				No. Required :
2114/3				2
Mark	Size	No	Length	Weight PC
2i/34	IPE140	1	2750	35.4
TOTAL (kg)				35.4



3D

GENERAL NOTES

تذکرات مهم:
1- جهت نصب بر روی تیر حتما علامت زده شود.
2- نوزپارتهای دوسرتهای در محل پروژه و حین نصب اجرا میگردند.

Legend:

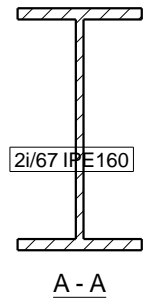
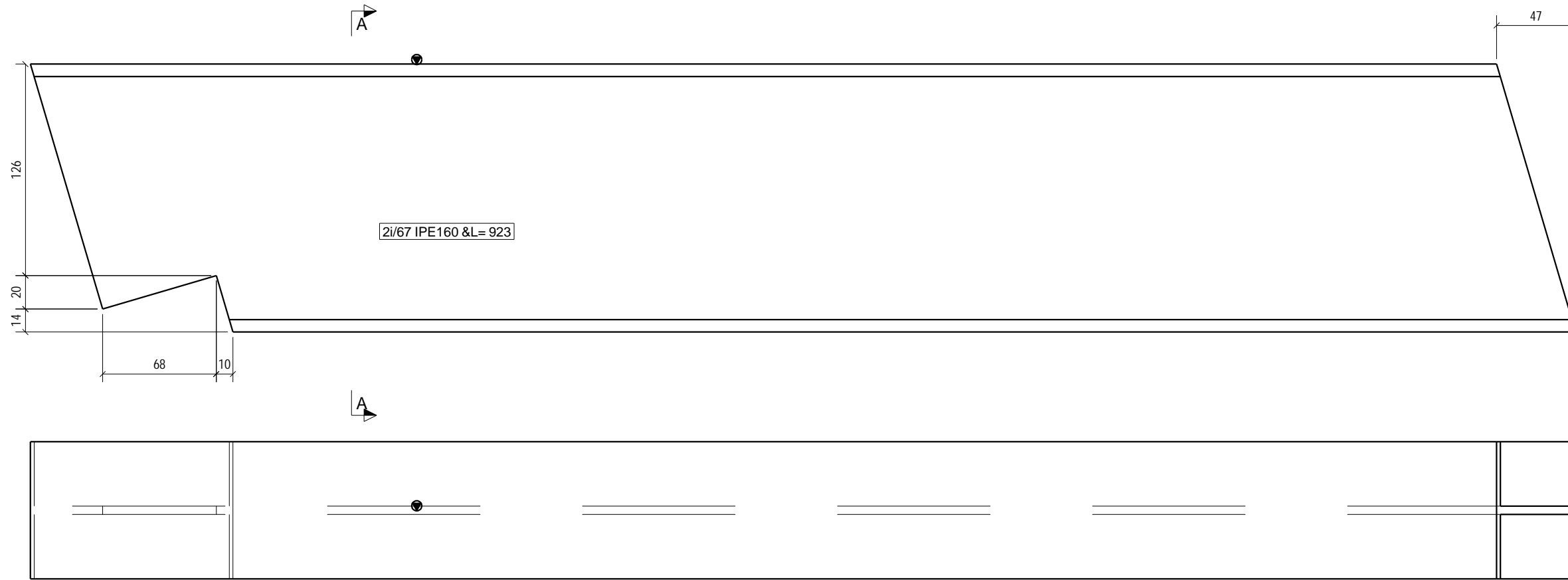
lci=Part 01-For Col-Intracacy	lii=Part 01-For IPE Beams-Intracacy
lB1=Beam And 01 Th Type At Part 01	ST=Stair
lbi=Part 01-For Beams-Intracacy	LP=Loose Part
lC1=Collumns And 01 Th Type At Part 01	
li=Part 01-IPE Beam	

General Corner Welding Dimensions For Beams&Collumns

Section	C.W.D/Section	C.W.D/Section	C.W.D/Section	C.W.D/Section	C.W.D/Section	C.W.D/Section	C.W.D/Section	General Notes:
CSA 10	CSG 10							بافی اتصالات با پد
CSE 10	FGI 8							هفت دهم ضخامت
CSC 10	FGI 8							ورق جوش اجرا گردد.
CSD 10	FGI 8							
CSE 10	FGI 8							
CSF 10	FGI 8							

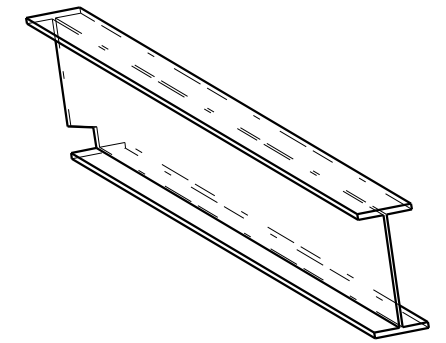
0	02	1394-07-13	Rad.Engineer	Rad.Engineer	Rad.Engineer
REV.	Phase Number:	Created date:	Modeled By:	Checked By:	Project Manager:

DESCRIPTION:	PROJECT TITLE:	 مسکونی آقای محمود خانی	
SCALE:	N.T.S		
UNIT:	OWNER:	آقای محمد محمودخانی	
FIELD:	CONSULTANT:	گروه مهندسی بالار	
PHASE:	DRAWING TITLE:		
02			
Project No.:	- PH. 02	R. 0	1/1



BILL OF MATERIAL

MATERIAL LIST FOR ONE ASSEMBLY				No. Required :	1
2116/12					
Mark	Size	No	Length	Weight	PC
2i/67	IPE160	1	923	14.6	
TOTAL (kg)				14.6	



3D

GENERAL NOTES

تذکرات مهم:
1- جهت نصب بر روی تیر حتما علامت زده شود.
2- نوزپارتهای دوسر تیرها در محل پروژه و حین نصب اجرا میگردند.


Legend:

lci=Part 01-For Col-Intracacy	lii=Part 01-For IPE Beams-Intracacy
lB1=Beam And 01 Th Type At Part 01	ST=Stair
lbi=Part 01-For Beams-Intracacy	LP=Loose Part
lC1=Collumns And 01 Th Type At Part 01	
li=Part 01-IPE Beam	

General Corner Welding Dimensions For Beams&Collumns

Section	C.W.D/Section	C.W.D/Section	C.W.D/Section	C.W.D/Section	C.W.D/Section	C.W.D/Section	General Notes:
CSA	10	CSG	10				بافی اتصالات با پد هفت دهم ضخامت ورق جوش اجرا گردد.
CSE	10	FGI	8				
CSC	10	FGI	8				
CSD	10	FGI	8				
CSE	10	FGI	8				
CSF	10	FGI	8				

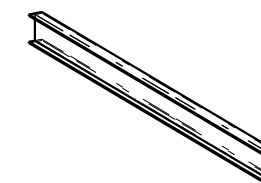
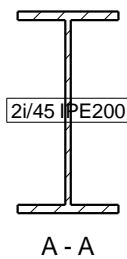
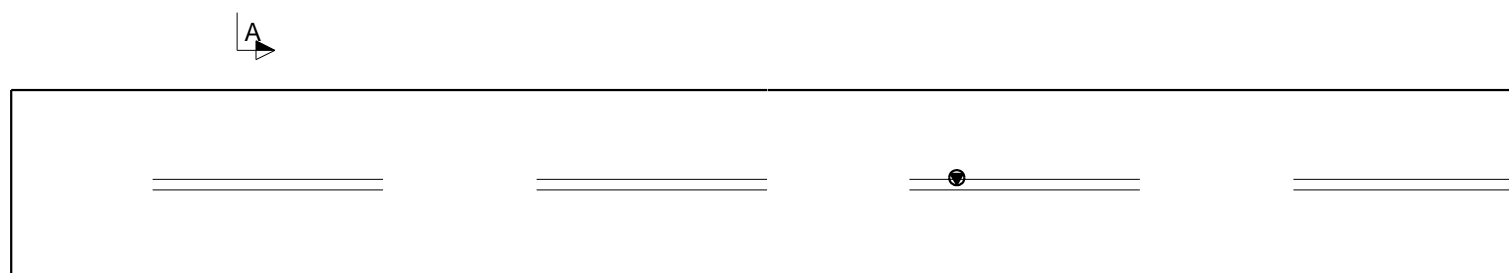
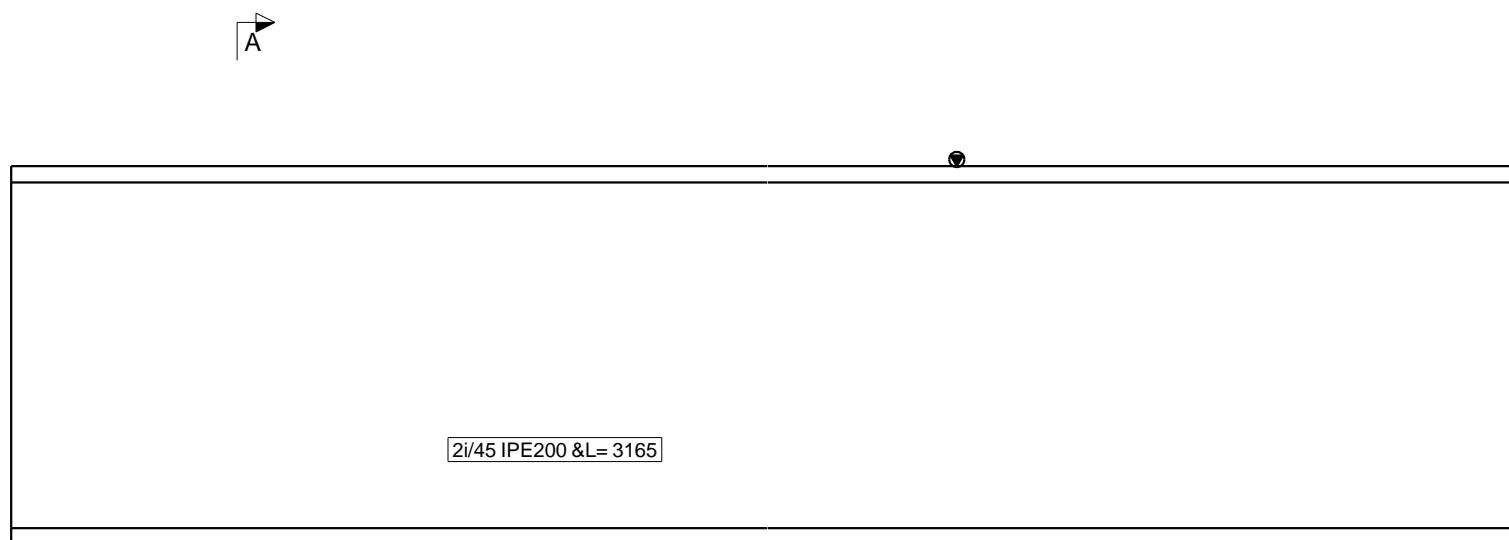
0	02	1394-07-13	Rad.Engineer	Rad.Engineer	Rad.Engineer
REV.	Phase Number:	Created date:	Modeled By:	Checked By:	Project Manager:

DESCRIPTION:	PROJECT TITLE:	
SCALE:	مسکونی آقای محمود خانی	
UNIT:	OWNER:	آقای محمد محمودخانی
FIELD:	CONSULTANT:	گروه مهندسی بالار
PHASE:	DRAWING TITLE:	
02		

Project No.:	- PH. 02	R. 0	1/1
--------------	----------	------	-----

BILL OF MATERIAL

MATERIAL LIST FOR ONE ASSEMBLY				No. Required :
2120/2				2
Mark	Size	No	Length	Weight PC
2i/45	IPE200	1	3165	70.8
TOTAL (kg)				70.8



3D

GENERAL NOTES

تذکرات مهم:
 1- جهت نصب بر روی تیر حتما علامت زده شود.
 2- نوزپارتهای دوسر تیرها در محل پروژه و حین نصب اجرا میگردند.

Legend:

lci=Part 01-For Col-Intracacy	lii=Part 01-For IPE Beams-Intracacy
lB1=Beam And 01 Th Type At Part 01	ST=Stair
lbi=Part 01-For Beams-Intracacy	LP=Loose Part
lC1=Collumns And 01 Th Type At Part 01	
li=Part 01-IPE Beam	

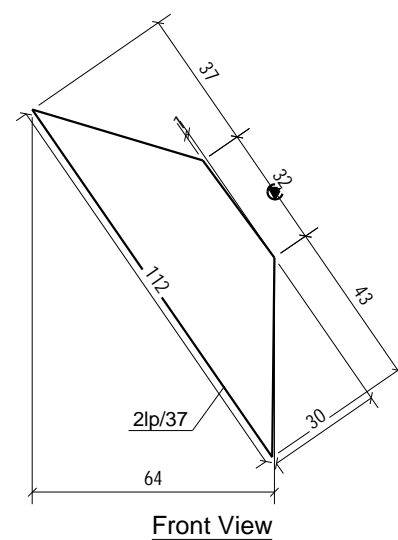
General Corner Welding Dimensions For Beams&Collumns							
Section	C.W.D/Section	C.W.D/Section	C.W.D/Section	C.W.D/Section	C.W.D/Section	C.W.D/Section	General Notes:
C5A	10	C5G	10				بافی اتصالات با پد هفت دهم ضخامت ورق جوش اجرا گردد.
C5B	10	FGI	8				
C5C	10	FG2	8				
C5D	10	FG3	8				
C5E	10	FG4	8				
C5F	10	FG5	8				

0	02	1394-07-13	Rad.Engineer	Rad.Engineer	Rad.Engineer
REV.	Phase Number:	Created date:	Modeled By:	Checked By:	Project Manager:

DESCRIPTION:	PROJECT TITLE:		
SCALE:	مسکونی آقای محمود خانی		
UNIT:	OWNER:	سپلان سوله اردبیل	
FIELD:	CONSULTANT:	آقای محمد محمودخانی	
PHASE:	DRAWING TITLE:	گروه مهندسی بالار	
02			
Project No.:	- PH. 02	R. 0	1/1

BILL OF MATERIAL

MATERIAL LIST FOR ONE ASSEMBLY				No. Required :
2LPAT160/2				11
Mark	Size	No	Length	Weight PC
2lp/37	PL15*30	1	112	0.4
TOTAL (kg)				0.4



Front View



Top View

GENERAL NOTES

تذکرات مهم:
1- جهت نصب بر روی تیر حتما علامت زده شود.
2- نوز پارت های دوسر تیرها در محل پروژه و حین نصب اجرا میگردند.


Legend:

lci=Part 01-For Col-Intracacy	lii=Part 01-For IPE Beams-Intracacy
lB1=Beam And 01 Th Type At Part 01	ST=Stair
lbi=Part 01-For Beams-Intracacy	LP=Loose Part
lC1=Collumns And 01 Th Type At Part 01	
li=Part 01-IPE Beam	

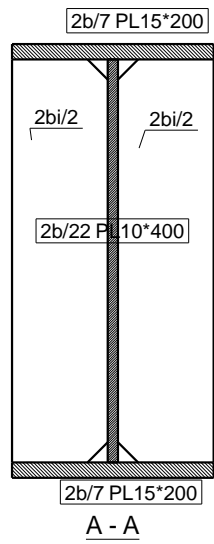
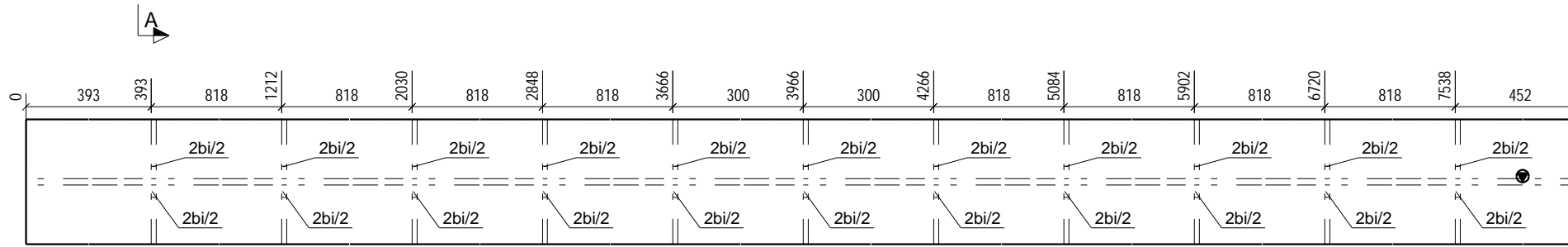
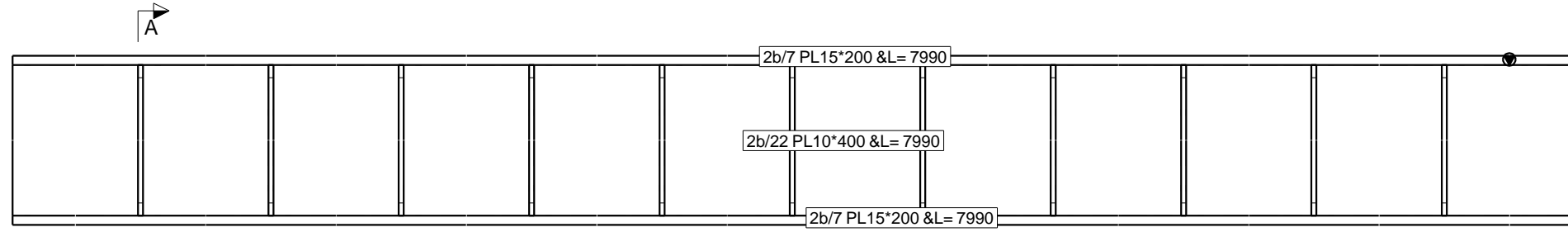
General Corner Welding Dimensions For Beams&Collumns

Section	C.W.D/Section	C.W.D/Section	C.W.D/Section	C.W.D/Section	C.W.D/Section	C.W.D/Section	C.W.D/Section	General Notes:
C5A 10	C5C 10							بافی اتصالات با پد
C5B 10	FGI 8							فلت دهم ضخامت
C5C 10	FGI 8							ورقی جوش اجرا گردد.
C5D 10	FGI 8							
C5E 10	FGI 8							
C5F 10	FGI 8							

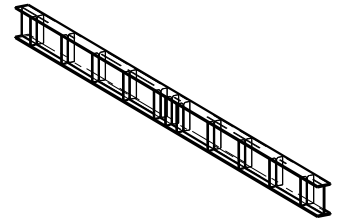
0	02	1394-07-13	Rad.Engineer	Rad.Engineer	Rad.Engineer
REV.	Phase Number:	Created date:	Modeled By:	Checked By:	Project Manager:

DESCRIPTION:	PROJECT TITLE:	 سبلان سوله اردبیل
SCALE:	مسکونی آقای محمود خانی	
UNIT:	OWNER:	آقای محمد محمودخانی
FIELD:	CONSULTANT:	گروه مهندسی بالار
PHASE:	DRAWING TITLE:	
02		

Project No.:	- PH. 02	R. 0	1/1
--------------	----------	------	-----



BILL OF MATERIAL				
MATERIAL LIST FOR ONE ASSEMBLY				No. Required :
2PG1/3				1
Mark	Size	No	Length	Weight PC
2b/7	PL15*200	2	7990	188.2
2b/22	PL10*400	1	7990	250.9
2bi/2	PL8*95	22	400	2.4
TOTAL (kg)				679.7



3D

GENERAL NOTES

تکات مهم:
 1- جهت نصب بر روی تیر حتما علامت زده شود.
 2- نوزپارتهای دوسرتیرها در محل پروژه و حین نصب اجرا میگردند.

Legend:

Ici=Part 01-For Col-Intracacy	Iii=Part 01-For IPE Beams-Intracacy
IBI=Beam And 01Th Type At Part 01	ST=Stair
Ibi=Part 01-For Beams-Intracacy	LP=Loose Part
IC1=Collumns And 01 Th Type At Part 01	
Ii=Part 01-IPE Beam	

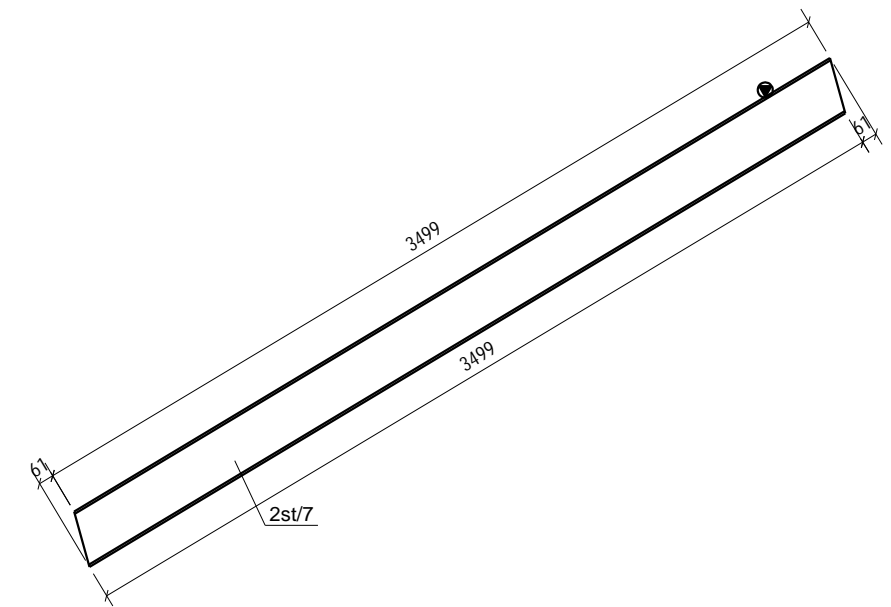
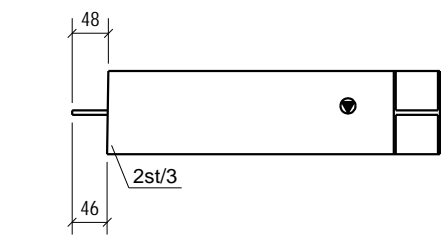
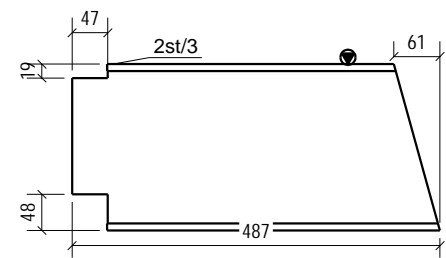
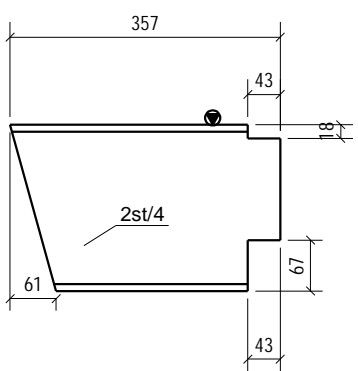
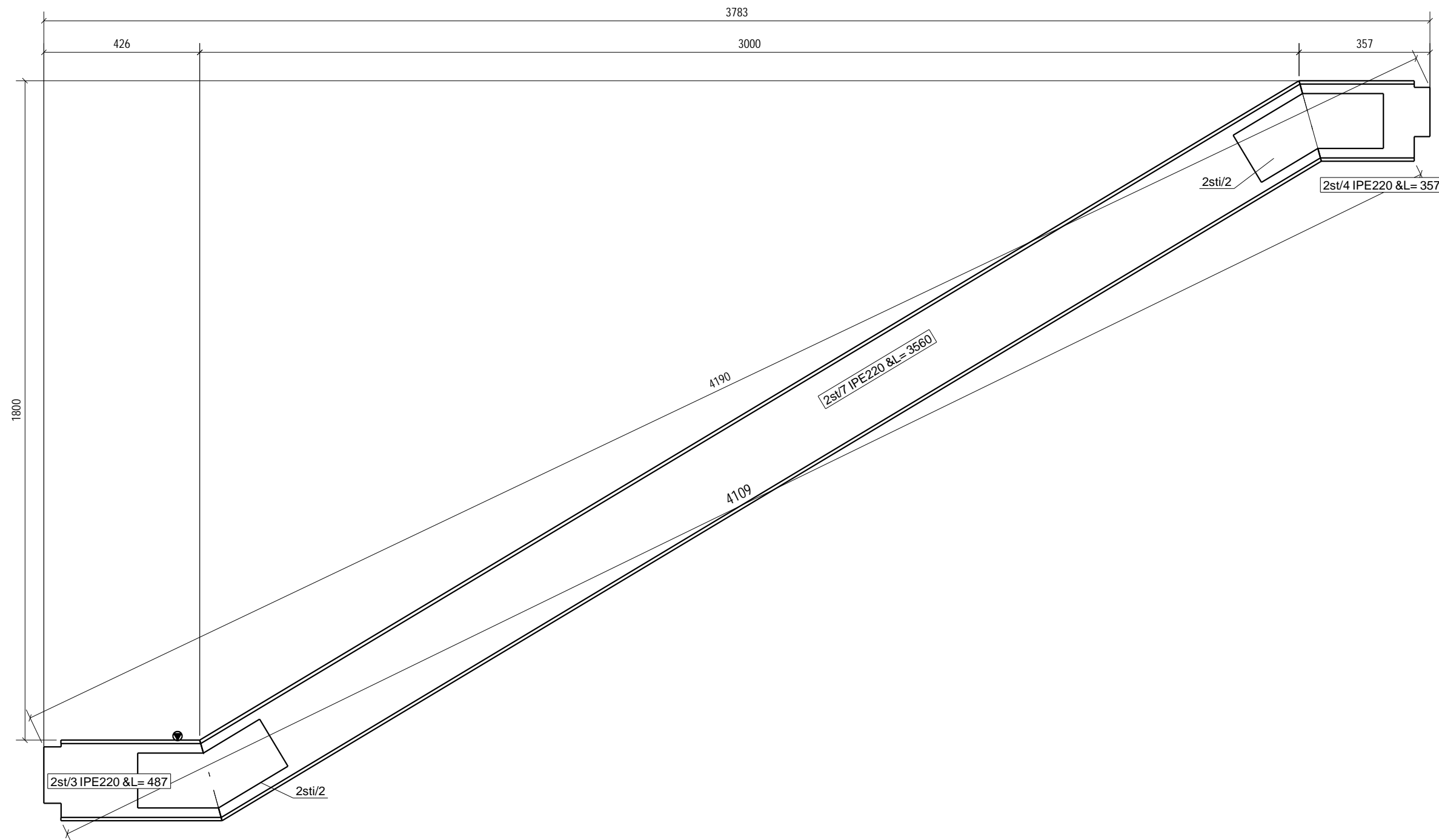
General Corner Welding Dimensions For Beams&Collumns

Sections	C.W.D	Sections	C.W.D	Sections	C.W.D	Sections	C.W.D	Sections	C.W.D	General Notes:
CSA 10	CSG 10									باقی اتصالات با بعد هفت دهم ضخامت ورق جوش اجرا گردد.
CSB 10	PGI 8									
CSC 10	PGI 8									
CSD 10	PGI 8									
CSE 10	PGI 8									

1	02	1394-07-29	Rad.Engineer	Rad.Engineer	Rad.Engineer
0	02	1394-07-13	Rad.Engineer	Rad.Engineer	Rad.Engineer

REV. Phase Number: Created date: Modeled By: Checked By: Project Manager:

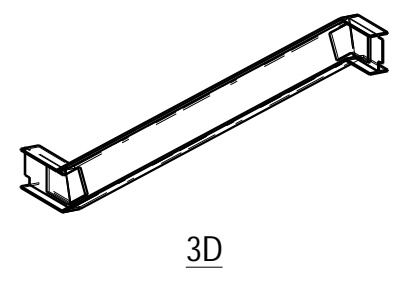
DESCRIPTION:	PROJECT TITLE:		
SCALE:	مسکونی آقای محمود خانی		
UNIT:	OWNER:	آقای محمد محمودخانی	
FIELD:	CONSULTANT:	گروه مهندسی بالار	
PHASE:	DRAWING TITLE:		
02			
Project No.:	- PH. 02	R. 1	1/1



BILL OF MATERIAL

MATERIAL LIST FOR ONE ASSEMBLY No. Required : **2**

Mark	Size	No	Length	Weight PC
2st/3	IPE220	1	487	12.8
2st/4	IPE220	1	357	9.4
2st/7	IPE220	1	3560	93.3
2sti/2	PL15*150	2	400	7.1
TOTAL (kg)				129.6



GENERAL NOTES

تکات مهم:
1- جهت نصب بر روی تیر حتما علامت زده شود.
2- نوز پارت های دوسر تیرها در محل پروژه و حین نصب اجرا میگردند.

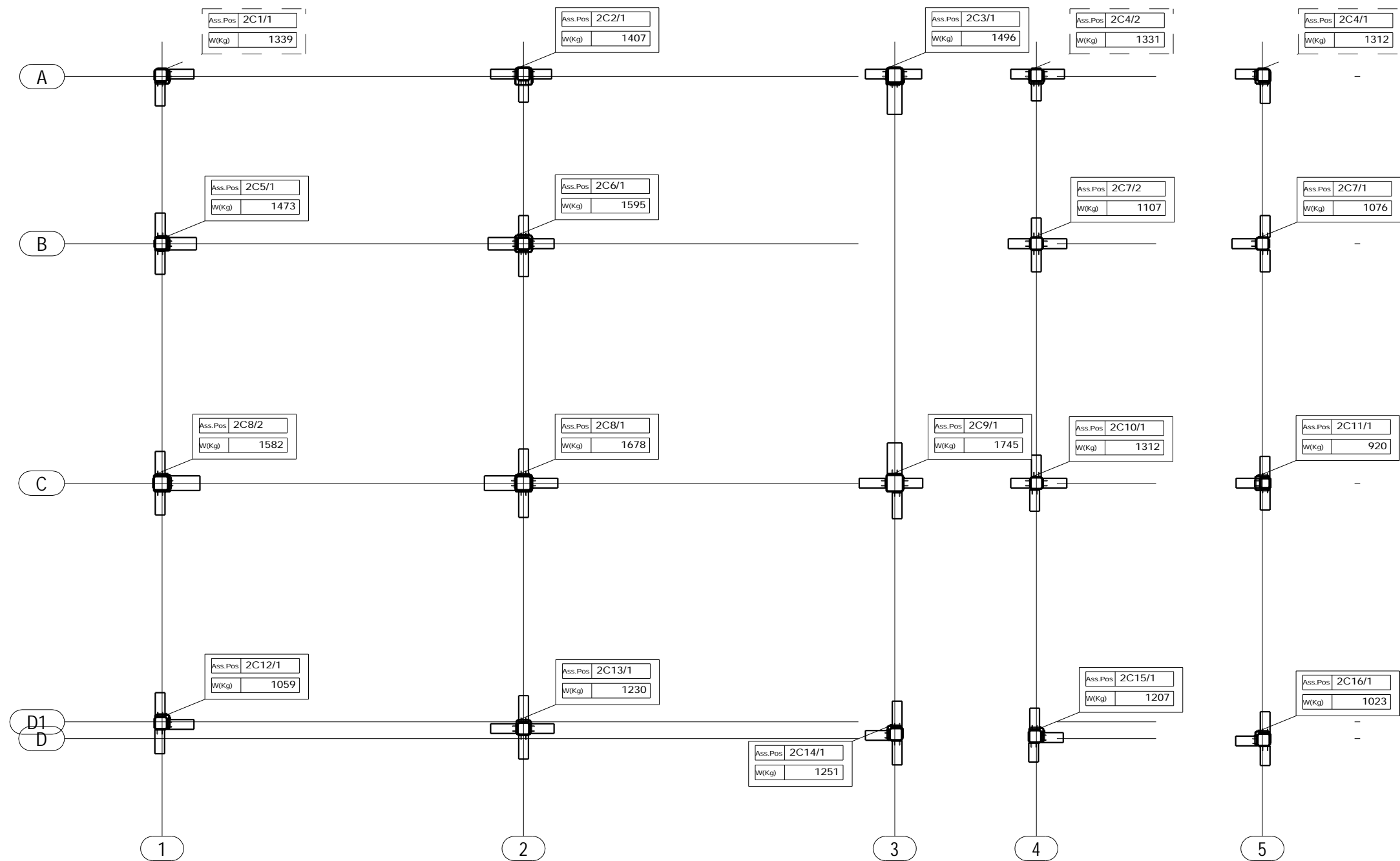
Legend:

Ici=Part 01-For Col-Intracacy	Iii=Part 01-For IPE Beams-Intracacy
IBI=Beam And 01 Th Type At Part 01	ST=Stair
Ibi=Part 01-For Beams-Intracacy	LP=Loose Part
ICI=Collumns And 01 Th Type At Part 01	
Ii=Part 01-IPE Beam	

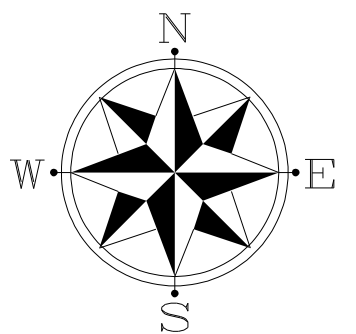
General Corner Welding Dimensions For Beams&Collumns

Section	C.W.D/Sections	C.W.D/Sections	C.W.D/Sections	C.W.D/Sections	C.W.D/Sections	C.W.D/Sections	C.W.D/Sections	General Notes:
CXA 10	CSC 10							بافی اتصالات با پد فلت دهم ضخامت ورق جوش اجرا گردد.
CXB 10	FGI 8							
CXC 10	FGI 8							
CXD 10	FGI 8							
CXE 10	FGI 8							
CXF 10	FGI 8							

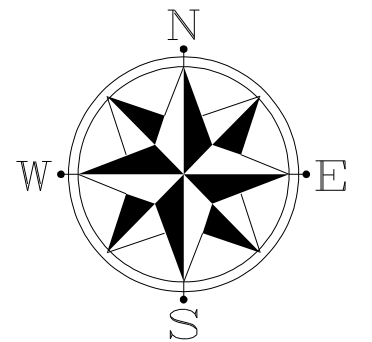
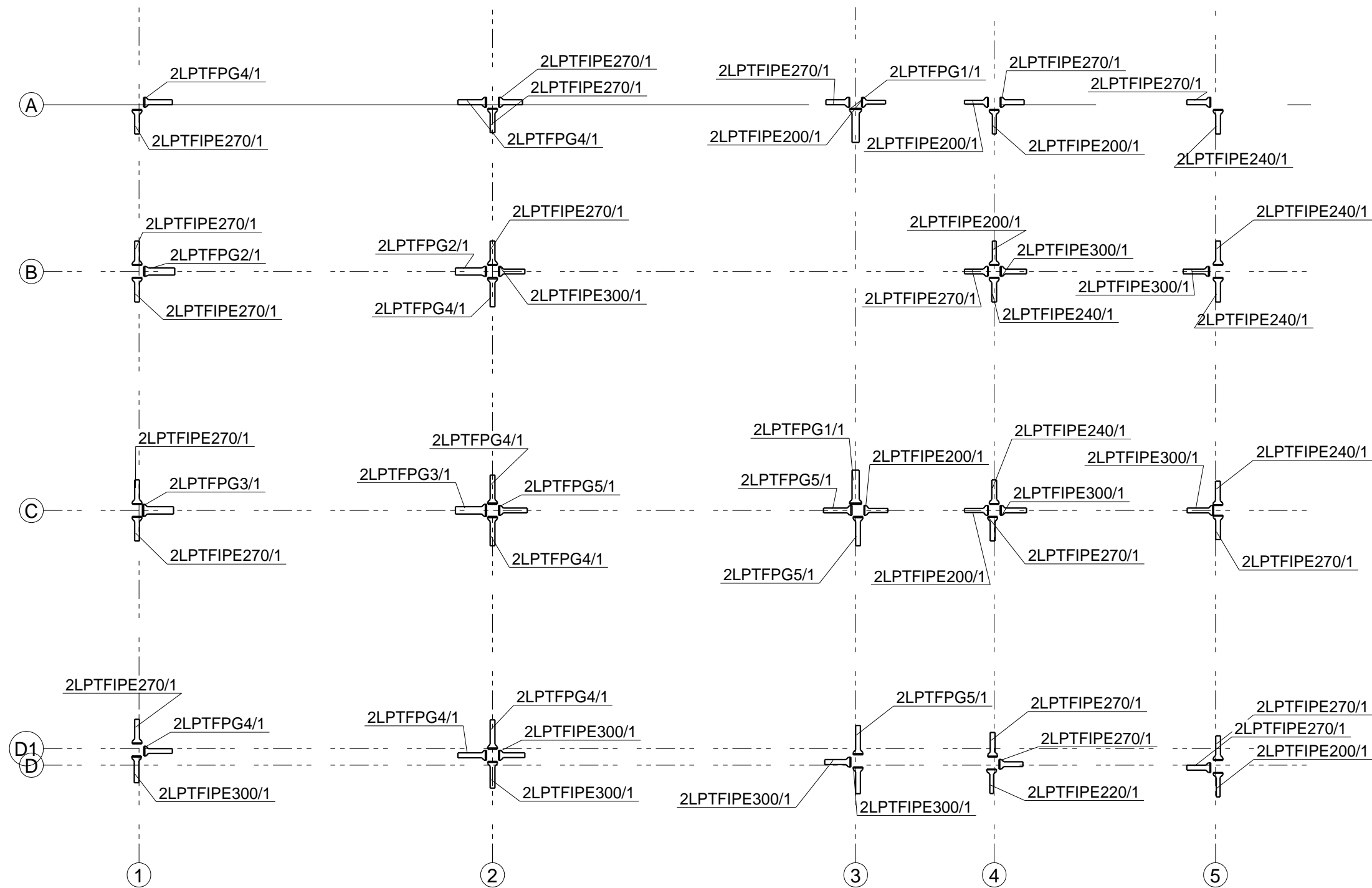
0	02	1394-07-13	Rad.Engineer	Rad.Engineer	Rad.Engineer
REV.	Phase Number:	Created date:	Modeled By:	Checked By:	Project Manager:
DESCRIPTION:	PROJECT TITLE:				
SCALE:	مسکونی آقای محمود خانی		سیلان سوله اردبیل		
UNIT:	OWNER:		آقای محمد محمودخانی		
FIELD:	CONSULTANT:		گروه مهندسی بالار		
PHASE:	DRAWING TITLE:		02		
Project No.:		- PH. 02	R. 0	1/1	



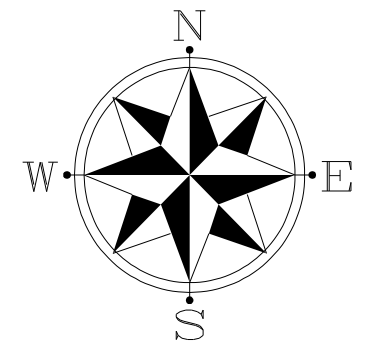
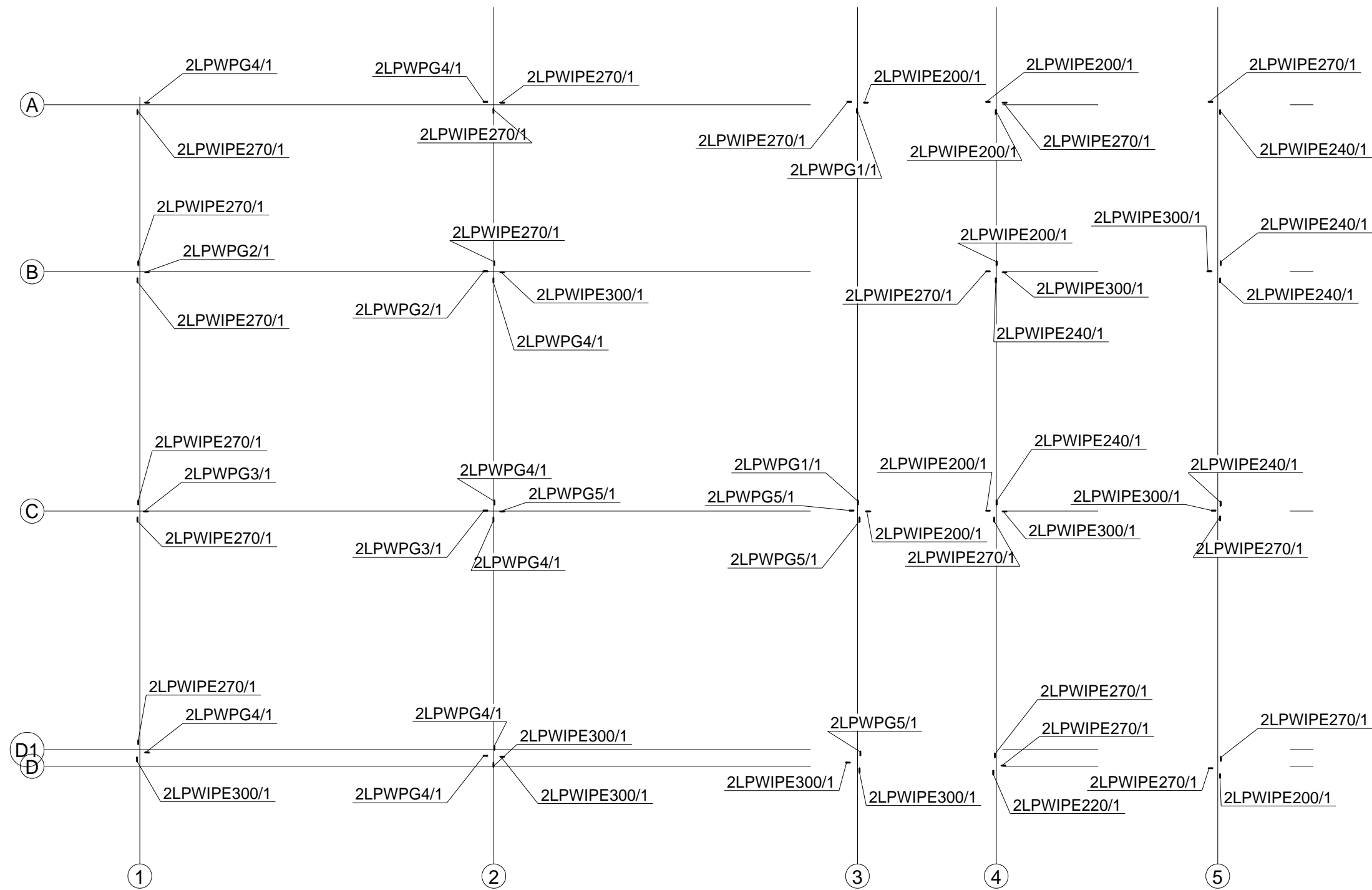
Columns 'S' Key Plan Of 02Th Part



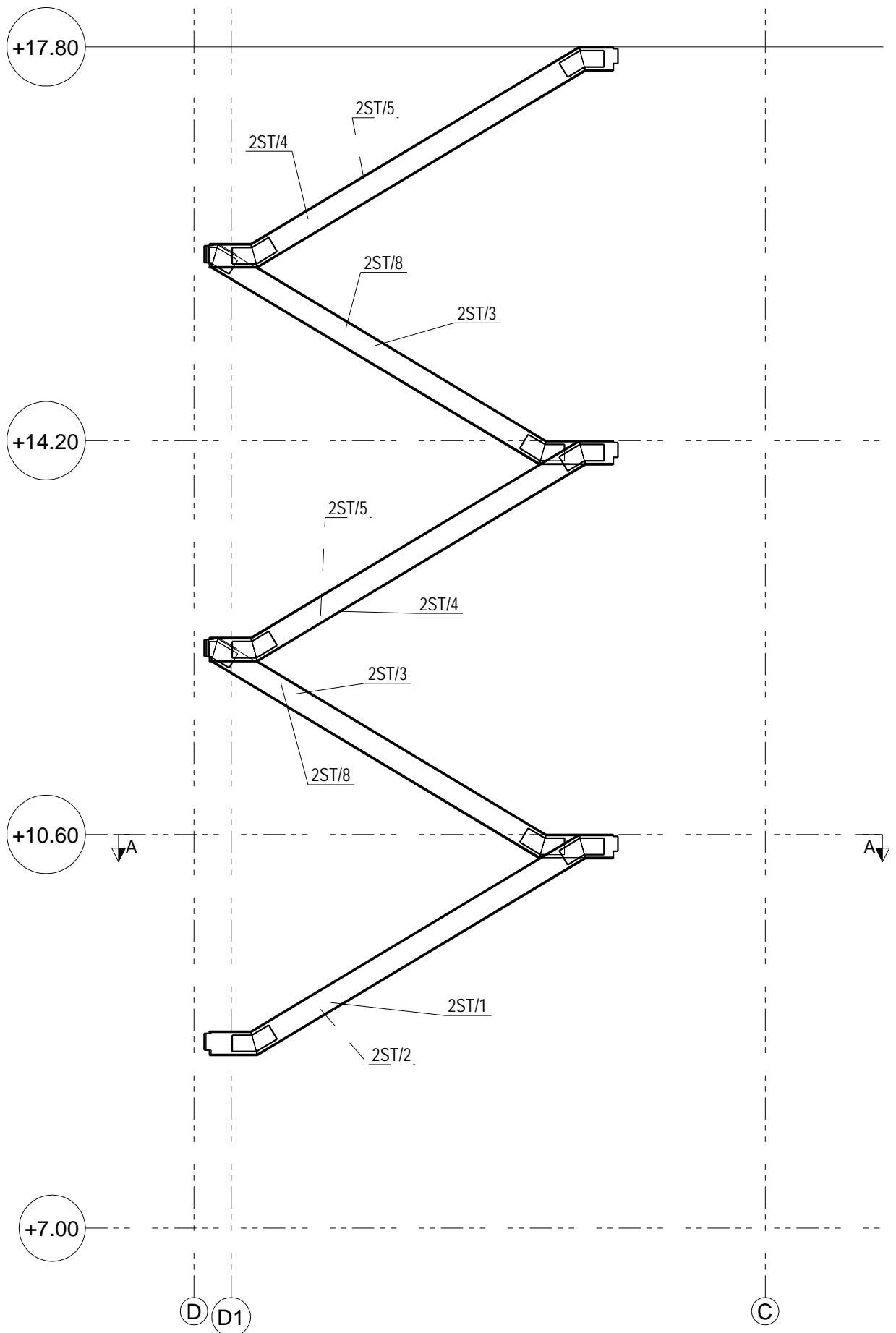
0	02	1394-07-13	Rad.Engineer	Rad.Engineer	Rad.Engineer
REV.	Phase Number:	Created date:	Modeled By:	Checked By:	Project Manager:
DESCRIPTION	PROJECT TITLE:		CONTRACTOR:		
SCALE:	N.T.S				
UNIT:	mm		OWNER: جناب آقاي محمود خاني		
FIELD:	STRU.		CONSULTANT: جناب آقاي مهندس بالار		
BLOCK :	DRAWING TITLE: Columns 'S' Key Plan Of 02Th Part				
S.S.A	1	-PH1- STR -GA -	- R.0	1/1	



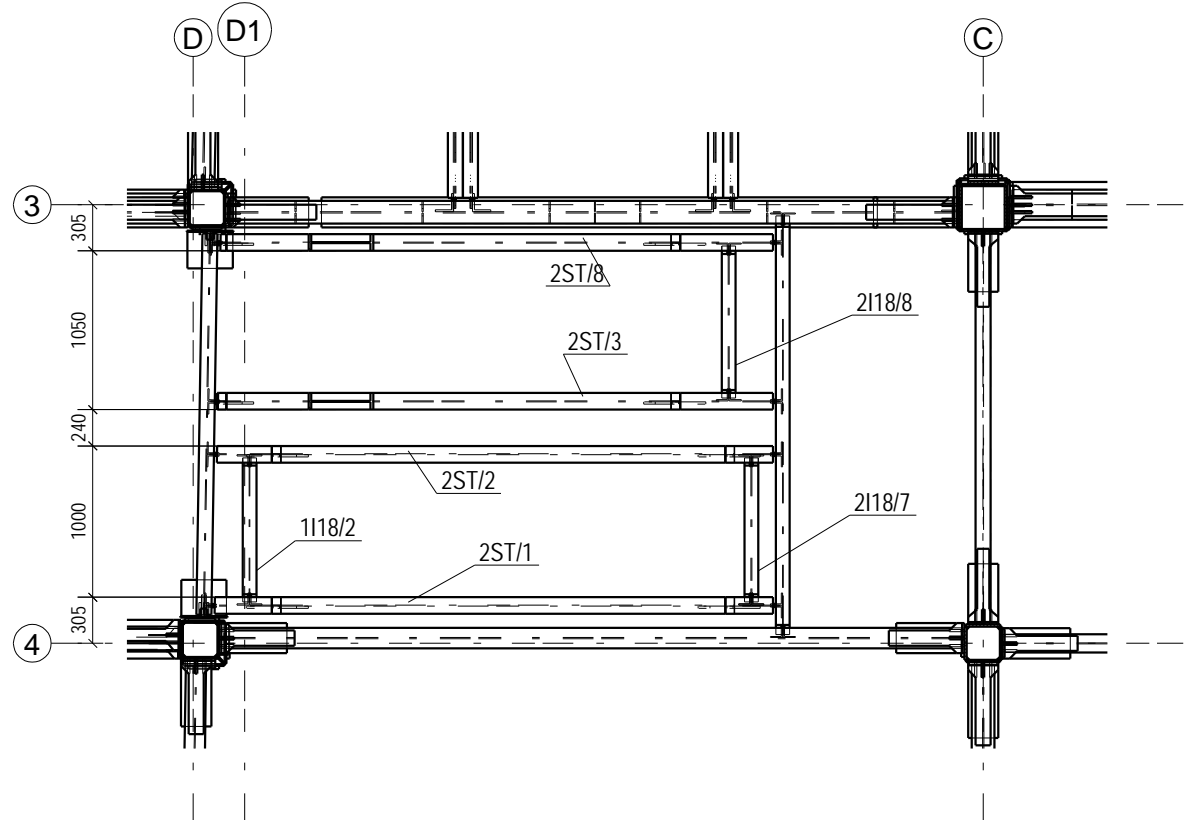
0	02	1394-07-13	Rad.Engineer	Rad.Engineer	Rad.Engineer
REV.	Phase Number:	Created date:	Modeled By:	Checked By:	Project Manager:
DESCRIPTION	PROJECT TITLE:		CONTRACTOR:		
SCALE:	مجمع مسكوني آقاي محمود خاني				
UNIT:	OWNER:		جناب آقاي محمود خاني		
FIELD: Structure	CONSULTANT:		جناب آقاي مهندس بالار		
PHASE:	DRAWING TITLE:				
02	Plan + 14.20				
Project No.:		- PH. 02	R. 0	2/3	



0	02	1394-07-13	Rad.Engineer	Rad.Engineer	Rad.Engineer
REV.	Phase Number:	Created date:	Modeled By:	Checked By:	Project Manager:
DESCRIPTION	PROJECT TITLE:		CONTRACTORE:		
SCALE:	N.T.S				
UNIT:	OWNER:		جناب آقای محمود خانی		
FIELD:	CONSULTANT:		جناب آقای مهندس بالار		
PHASE :	DRAWING TITLE:		02 Plan +14.20		
Project No.:		- PH. 02	R. 0	3/3	



GRID 4



A - A
1:50

0	02	1394-07-13	Rad.Engineer	Rad.Engineer	Rad.Engineer
REV.	Phase Number:	Created date:	Modeled By:	Checked By:	Project Manager:
DESCRIPTION	PROJECT TITLE:		CONTRACTOR:		
SCALE:	مجمع مسكوني آقاي محمود خاني				
UNIT:	OWNER:		جناب آقاي محمود خاني		
FIELD:	CONSULTANT:		جناب آقاي مهندس بالار		
BLOCK :	DRAWING TITLE:				
	Stairs'S Key Plan				
S.S.A	1	-PH1- STR -GA-	- R.0	1/1	