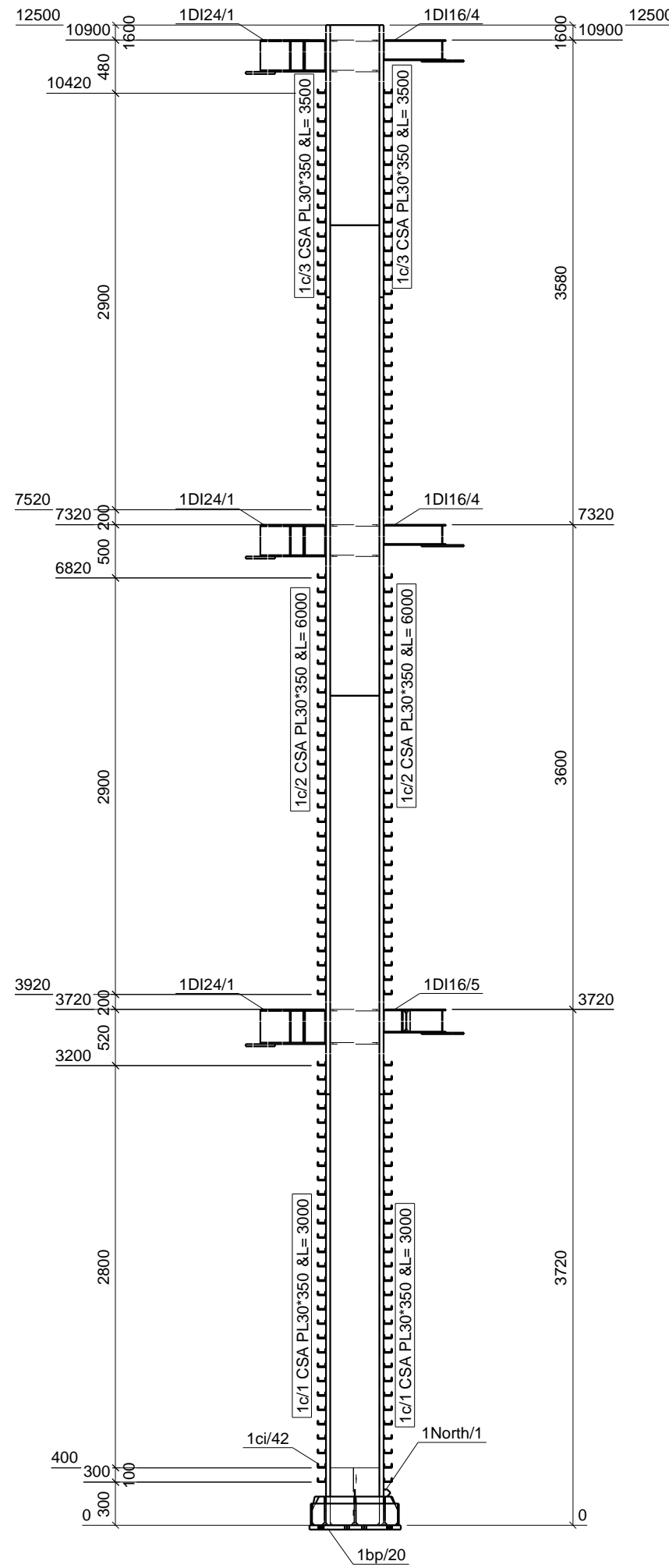


Front View



Top View

BILL OF MATERIAL

MATERIAL LIST FOR ONE ASSEMBLY No. Required :

Mark	Grade	Size	No	Length	Weight PC
1East/1	ST37	PL1*50	1	50	0.01
1North/1	ST37	PL1*50	1	50	0.01
1bp/20	ST37	PL30*649	1	657	99.43
1c/1	ST37	PL30*350	4	3000	247.28
1c/2	ST37	PL30*350	4	6000	494.55
1c/3	ST37	PL30*350	4	3500	288.49
1ci/7	ST37	PL10*260	6	350	7.08
1ci/9	ST37	PL10*200	2	610	8.88
1ci/23	ST37	PL10*200	2	200	3.11
1ci/24	ST37	PL10*90	2	200	1.19
1ci/25	ST37	PL10*90	2	200	1.22
1ci/26	ST37	PL10*200	1	275	3.82
1ci/39	ST37	PL8*150	4	610	5.75
1ci/42	ST37	UNP60	180	60	0.43
1ci/47	ST37	PL20*260	1	400	16.27
1ci/48	ST37	PL20*165	2	400	10.30
1ci/61	ST37	PL10*90	2	200	1.30
1D116/4	ASSEMBLY		2		12.29
1D116/5	ASSEMBLY		1		12.94
1D124/1	ASSEMBLY		3		29.29

Total Weigth(Kg): 4560.19

General Notes:

- 1- جهات جغرافیایی ستونها حین مونتاژ، جهات جغرافیایی محل نصب میباشد.
- 2- جهت نصب حتماً فقط در قسمت بالای تیر علامت زده شود.
- 3- وصله ستون به ستون در محل برخورد مقاطع ستون به یکدیگر نفوذی است.
- 4- جوش دستکها از بالا و جان به ستون نفوذی است.
- 5- جوش ورقهای پیوستگی داخل چشمه اتصالات صلب در هر چهار وجه نفوذی است.
- 6- مقدار پاشنه در تمام مقاطع ستونها به مقدار 15 میلیمتر است.

Legend:

Ici=Part 01-For Col-Intracacy	Iii=Part 01-For IPE Beams-Intracacy
IB1=Beam And 01Th Type At Part 01	ST=Stair
Ibi=Part 01-For Beams-Intracacy	LP=Loose Part
IC1=Collumns And 01 Th Type At Part 01	
Ii=Part 01-IPE Beam	

General Corner Welding Dimensions For Beams&Collumns

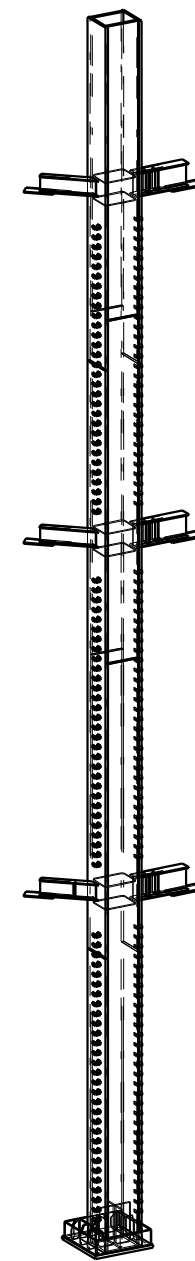
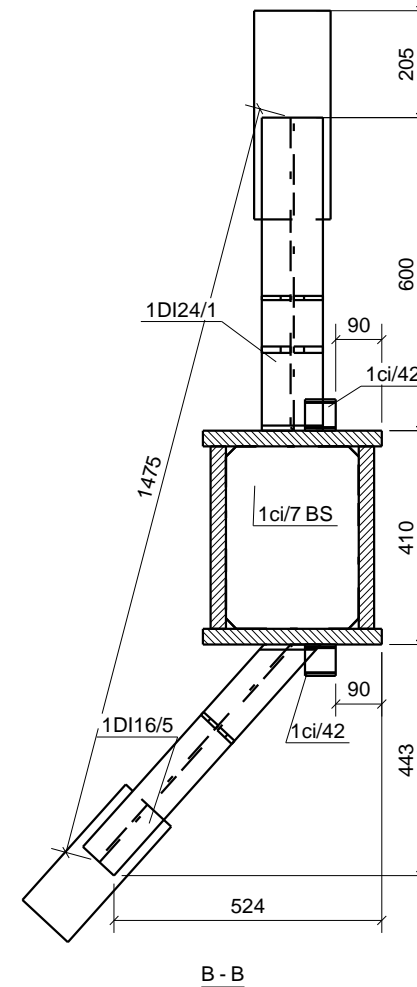
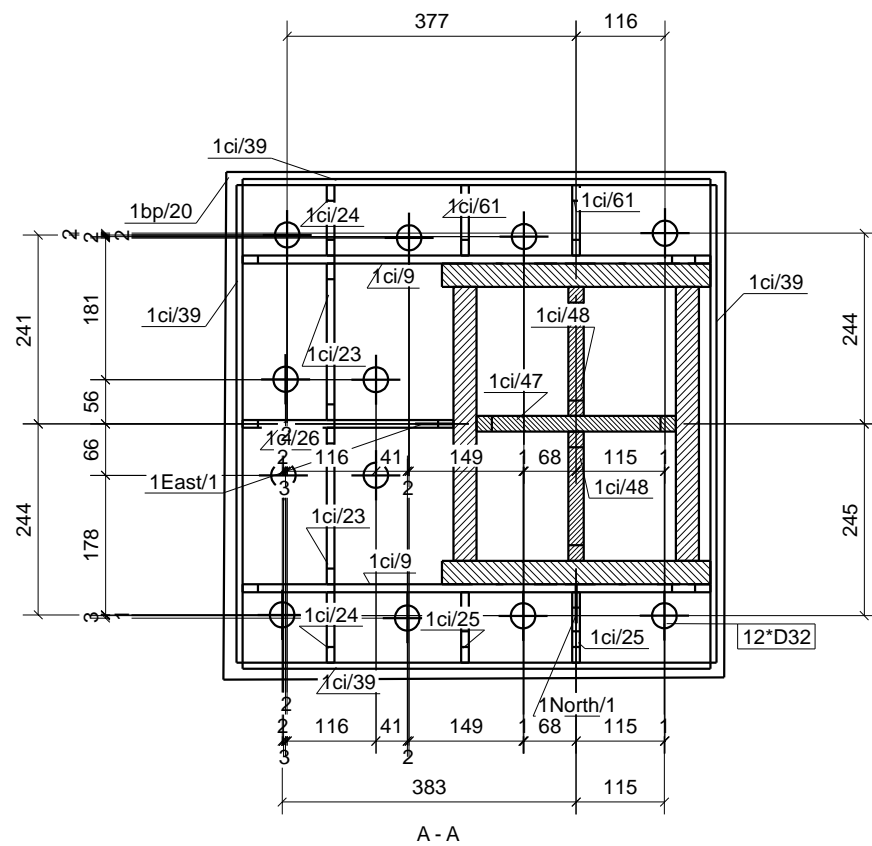
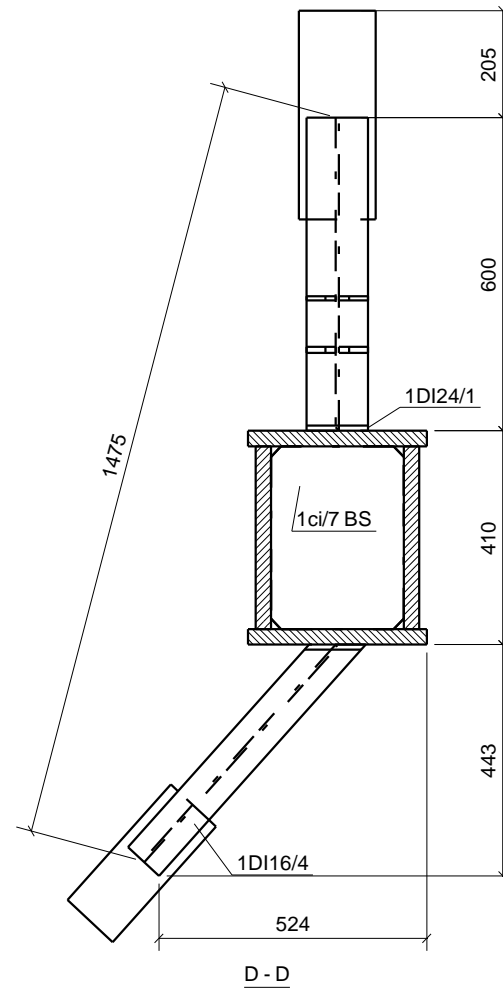
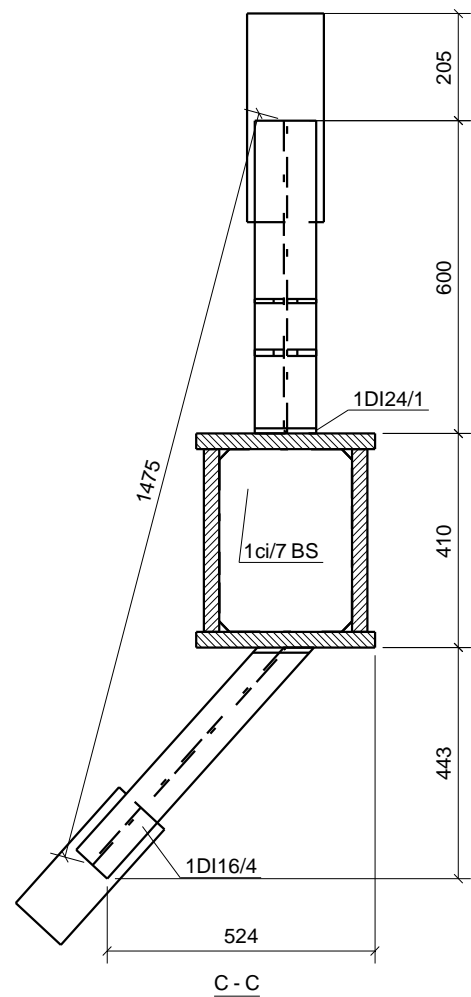
Sections	C.W.D	Sections	C.W.D	Sections	C.W.D	Sections	C.W.D	General Notes:
CSA 12	PG1 12	CSB 12	PG2 8	CSC 12	PG3 6	CSD 10	PG4 6	باقی اتصالات با بعد
CSE 8	PG5 6							هفت دم ضخامت
								ورق جوش اجرا گردد.

4	01	1395-01-26	Rad.Engineer	Rad.Engineer	Rad.Engineer
3	01	1395-01-11	Rad.Engineer	Rad.Engineer	Rad.Engineer
1	01	1394-10-20	Rad.Engineer	Rad.Engineer	Rad.Engineer
0	01	1394-09-30	Rad.Engineer	Rad.Engineer	Rad.Engineer

REV. Phase Number: Created date: Modeled By: Checked By: Project Manager:

DESCRIPTION:	PROJECT TITLE:	CONTRACTOR:
SCALE:	N.T.S	
UNIT:	mm	OWNER: جناب آقای شجاعی
FIELD:	Structure	CONSULTANT: جناب آقای مهندس درخشنده
PHASE:	01	DRAWING TITLE: 1C1/2

Project No.: - PH. 01 R. 4 1/2



3D

General Notes:

- 1- جهات جغرافیایی ستونها حین مونتاژ، جهات جغرافیایی محل نصب میباشد.
- 2- جهت نصب حتما و فقط در قسمت بالای تیر علامت زده شود.
- 3- وصله ستون به ستون در محل برخورد مقاطع ستون به یکدیگر نفوذی است.
- 4- جوش دستکها از بالای و جان به ستون نفوذی است.
- 5- جوش ورقهای پیوستگی داخل چشمه اتصالات صلب در چهار وجه نفوذی است.
- 6- مقدار پاشنه در تمام مقاطع ستونها به مقدار 15 میلیمتر است.

Legend:

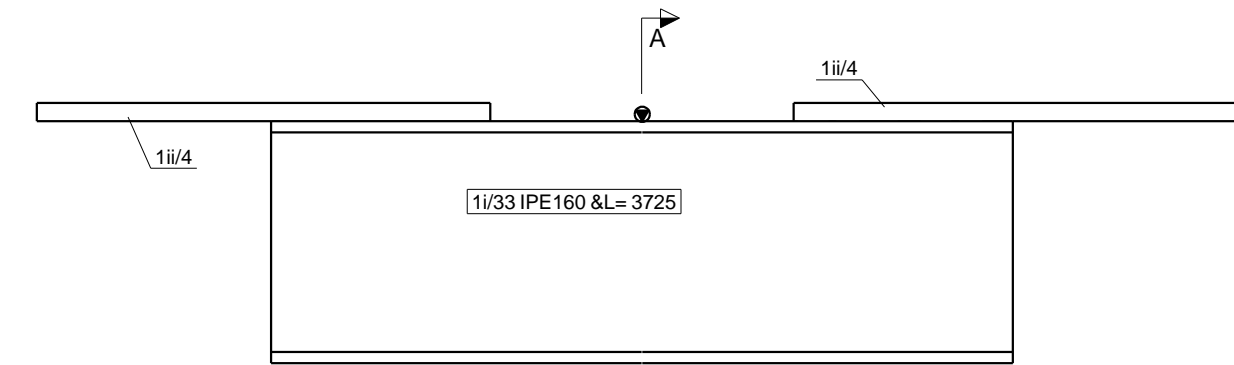
ICI=Part 01-For Col-Intricity	lii=Part 01-For IPE Beams-Intricity
IBI=Beam And 01Th Type At Part 01	ST=Stair
lbi=Part 01-For Beams-Intricity	LP=Loose Part
ICI=Columns And 01 Th Type At Part 01	
li=Part 01-IPE Beam	

General Corner Welding Dimensions For Beams&Columns

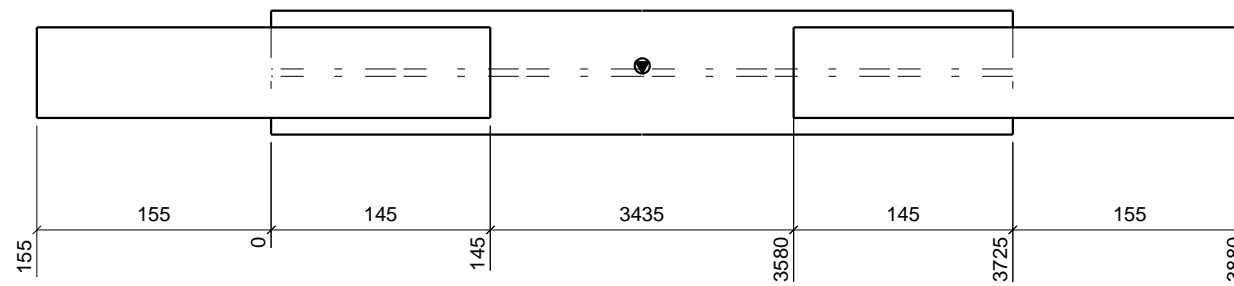
Section	C.W.D	Section	C.W.D	Section	C.W.D	Section	C.W.D	Section	C.W.D	General Notes:
CSA	12	PG1	12							جوش باقی اتصالات با بعد
CSB	12	PG2	8							هلت دهم ضخامت
CSC	12	PG3	6							ورق نازکتر اجرا گردد.
CSD	10	PG4	6							
CSE	8	PG5	6							

REV.	Phase Number:	Created date:	Modeled By:	Checked By:	Project Manager:
4	01	1395-01-26	Rad.Engineer	Rad.Engineer	Rad.Engineer
3	01	1395-01-11	Rad.Engineer	Rad.Engineer	Rad.Engineer
1	01	1394-10-20	Rad.Engineer	Rad.Engineer	Rad.Engineer
0	01	1394-09-30	Rad.Engineer	Rad.Engineer	Rad.Engineer

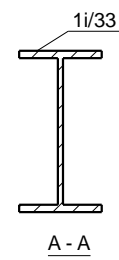
DESCRIPTION:	PROJECT TITLE:	CONTRACTORE:	
SCALE:	N.T.S	مجتمع مسکونی-تجاری جناب آقای شجاعی	
UNIT:	mm	جناب آقای شجاعی	
FIELD:	Structure	جناب آقای مهندس درخشنده	
PHASE:	01	DRAWING TITLE:	
		1C1/2	
Project No.:	- PH. 01	R. 4	2/2



Front View



Top View



A - A

BILL OF MATERIAL

MATERIAL LIST FOR ONE ASSEMBLY					No. Required :
Grid: H/3-1		1116/3		3	
Mark	Grade	Size	No	Length	Weight PC
1i/33	ST37	IPE160	1	3725	58.75
1i/4	ST37	PL12*60	2	300	1.70
Total Weigth(Kg):					62.14



3D

GENERAL NOTES

- 1- جهات شمال و جنوب درستونها، جهات جغرافیایی محل نصب میباشد.
- 2- جهت نصب حتما فقط در قسمت بالای تیر علامت زده شود.

Legend:

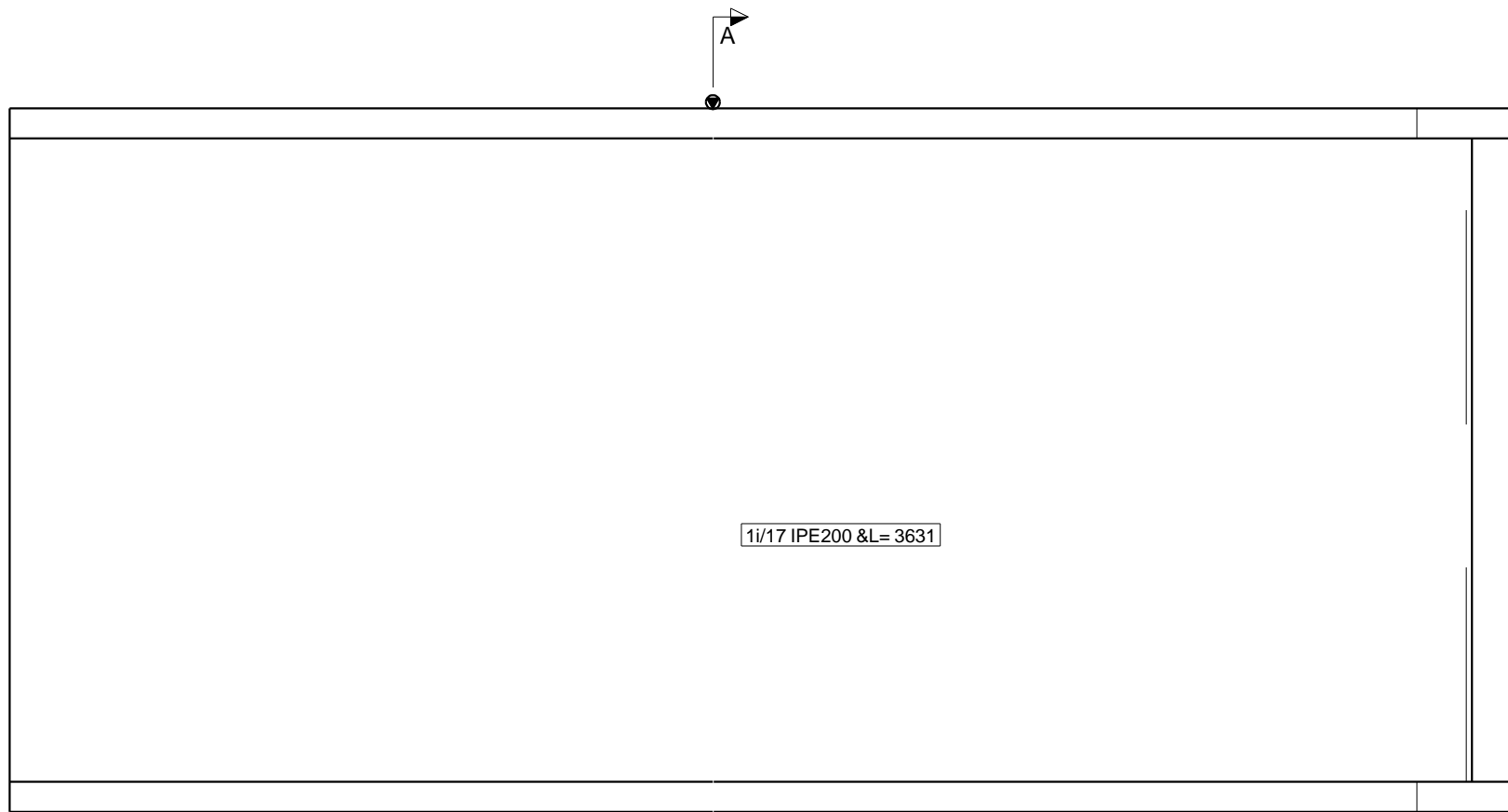
Ici=Part 01-For Col-Intricity	Iii=Part 01-For IPE Beams-Intricity
IBI=Beam And 01 Th Type At Part 01	ST=Stair
Ibi=Part 01-For Beams-Intricity	LP=Loose Part
IC1=Collumns And 01 Th Type At Part 01	
Ii=Part 01-IPE Beam	

General Corner Welding Dimensions For Beams&Collumns

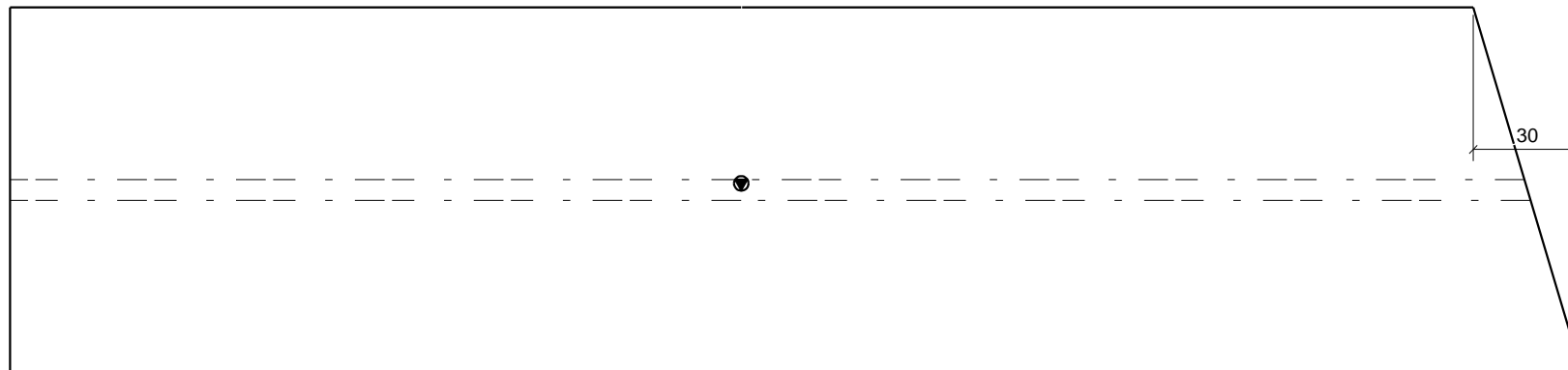
Sections	C.W.D	Sections	C.W.D	Sections	C.W.D	Sections	C.W.D	Sections	C.W.D	General Notes:
CSA 12		PG1	12							چوش بانگی اتصالات با بعد هفت دهم ضخامت ورق نازکتر اجرا گردد.
CSB 12		PG2	8							
CSC 12		PG3	6							
CSD 10		PG4	6							
CSE 8		PG5	6							

1	01	1394-11-17	Rad.Engineer	Rad.Engineer	Rad.Engineer
0	01	1394-09-30	Rad.Engineer	Rad.Engineer	Rad.Engineer
REV.	Phase Number:	Created date:	Modeled By:	Checked By:	Project Manager:

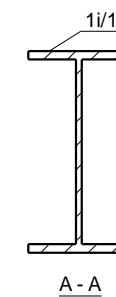
DESCRIPTION:	PROJECT TITLE:	CONTRACTORE:	
SCALE:	مجتمع مسكوني تجاري جنب آقاي شجاعی		
UNIT:	OWNER:	جناب آقاي شجاعی	
FIELD:	CONSULTANT:	جناب آقاي مهندس درخشنده	
PHASE:	DRAWING TITLE:		
01	1116/3		
Project No.:	PH. 01	R. 1	1/1



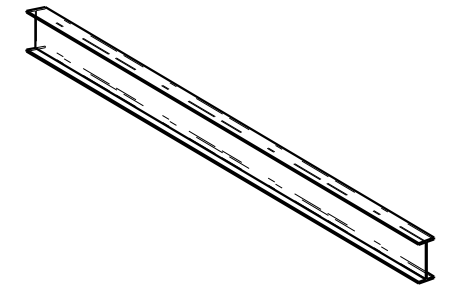
Front View



Top View



BILL OF MATERIAL					
MATERIAL LIST FOR ONE ASSEMBLY					No. Required :
Grid: E-F/6-6a			1120/16		1
Mark	Grade	Size	No	Length	Weight PC
1i/17	ST37	IPE200	1	3631	81.23
Total Weigth(Kg):					81.23



3D

GENERAL NOTES

- 1- جهات شمال و جنوب درستونها، جهات جغرافیایی محل نصب میباشد.
- 2- جهت نصب حتما و فقط در قسمت بالای تیر علامت زده شود.

Legend:

lci=Part 01-For Col-Intricity	lii=Part 01-For IPE Beams-Intricity
lB1=Beam And 01 Th Type At Part 01	ST=Stair
lbi=Part 01-For Beams-Intricity	LP=Loose Part
lC1=Collumns And 01 Th Type At Part 01	
li=Part 01-IPE Beam	

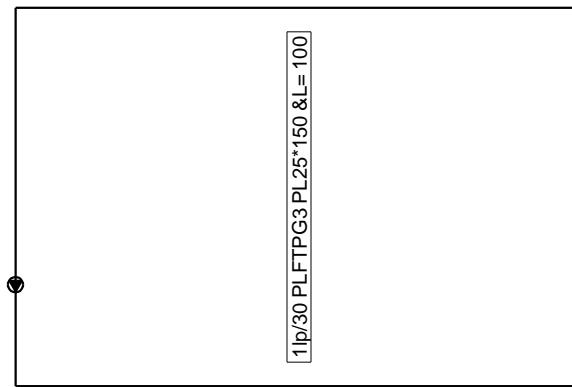
General Corner Welding Dimensions For Beams&Collumns							
Section	C.W.D/Sections	C.W.D/Sections	C.W.D/Sections	C.W.D/Sections	C.W.D/Sections	C.W.D/Sections	General Notes:
CSA 12	FG1	12					جوش باقی اتصالات با بعد هفت ده ضخامت ورق نازکتر اجرا گردد.
CSE 12	FG2	8					
CSC 12	FG3	6					
CSD 10	FG4	6					
CSE 8	FG5	6					

0	01	1394-09-30	Rad.Engineer	Rad.Engineer	Rad.Engineer
REV.	Phase Number:	Created date:	Modeled By:	Checked By:	Project Manager:

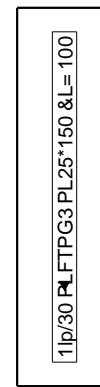
DESCRIPTION	PROJECT TITLE:	CONTRACTORE:	
SCALE:	مجتمع مسكوني تجاري جنب آقاي شجاعی		
UNIT:	OWNER:	جناب آقای شجاعی	
FIELD:	CONSULTANT:	جناب آقای مهندس درخشنده	
PHASE:	DRAWING TITLE:		
01	1120/16		
Project No.:	PH. 01	R. 0	1/1

BILL OF MATERIAL

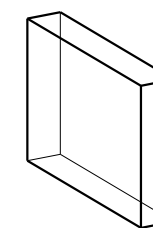
MATERIAL LIST FOR ONE ASSEMBLY					No. Required :
Grid: E1/6		1LPFTPG3/2		2	
Mark	Grade	Size	No	Length	Weight PC
1lp/30	ST37	PL25*150	1	100	2.94
Total Weigth(Kg):					2.94



Front View



Top View



3D

GENERAL NOTES

- 1- جهات شمال و جنوب درستونها، جهات جغرافیایی محل نصب میباشد.
- 2- جهت نصب حتما و فقط در قسمت بالای تیر علامت زده شود.

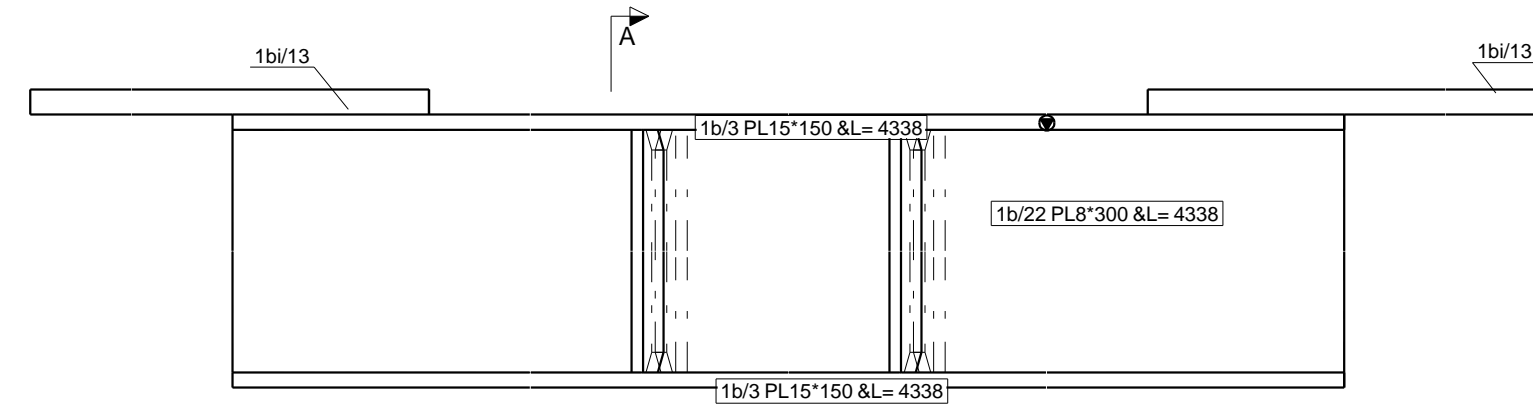
Legend:

lci=Part 01-For Col-Intracacy	lii=Part 01-For IPE Beams-Intracacy
IB1=Beam And 01 Th Type At Part 01	ST=Stair
lbi=Part 01-For Beams-Intracacy	LP=Loose Part
ICI=Collumns And 01 Th Type At Part 01	
li=Part 01-IPE Beam	

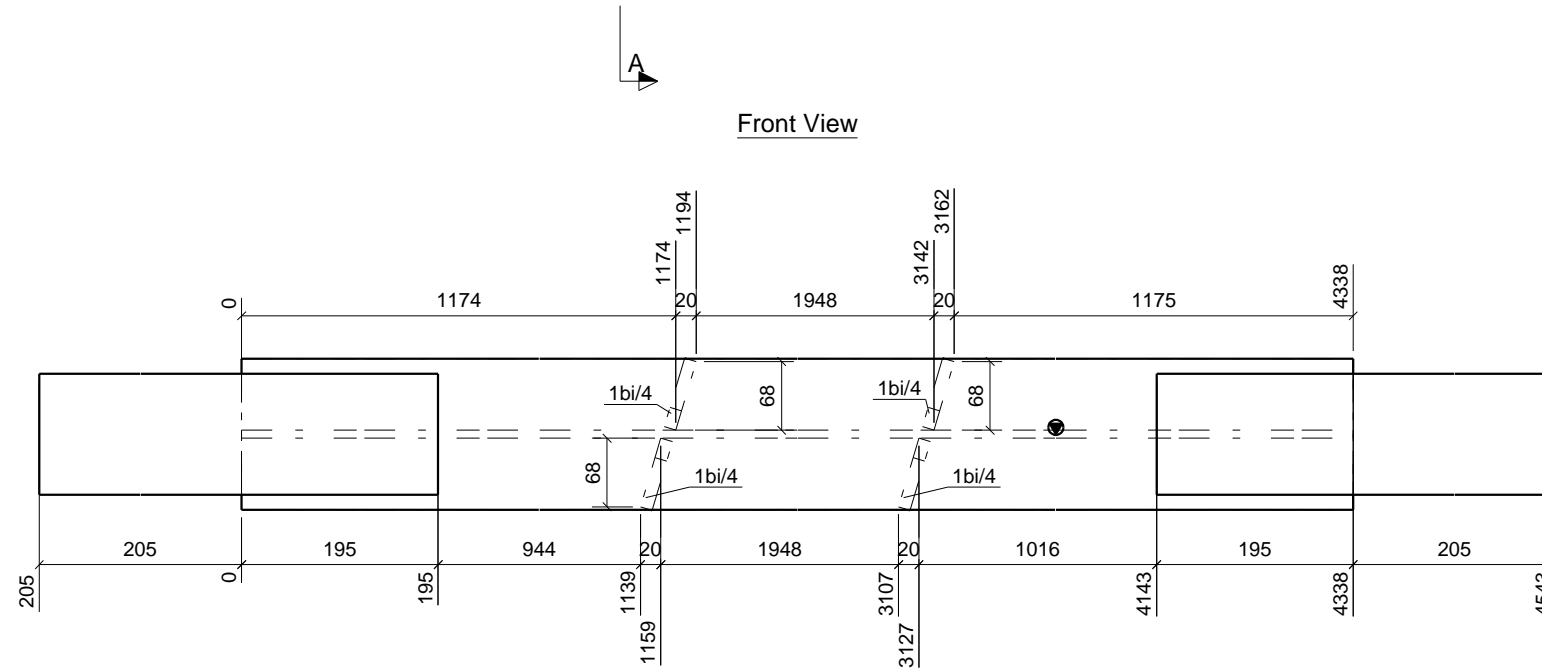
General Corner Welding Dimensions For Beams&Collumns							
Sections	C.W.D/Sections	C.W.D/Sections	C.W.D/Sections	C.W.D/Sections	C.W.D/Sections	C.W.D/Sections	General Notes:
CSA 12	PG1	12					جوش باقی اتصالات با بعد هفت ده ضخامت ورق نازکتر اجرا گردد .
CSE 12	PG2	8					
CSC 12	PG3	6					
CSD 10	PG4	6					
CSE 8	PG5	6					

0	01	1395-03-08	Rad.Engineer	Rad.Engineer	Rad.Engineer
REV.	Phase Number:	Created date:	Modeled By:	Checked By:	Project Manager:

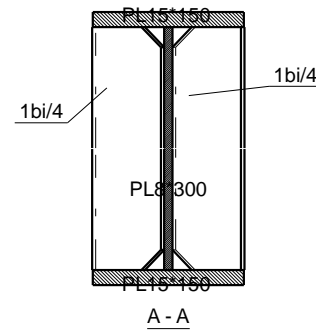
DESCRIPTION	PROJECT TITLE:	CONTRACTORE:	
SCALE:	مجتمع مسكوني تجاري جنب آقاي شجاعی		
N.T.S			
UNIT:	OWNER:	جناب آقای شجاعی	
mm			
FIELD:	CONSULTANT:	جناب آقای مهندس درخشنده	
Structure			
PHASE:	DRAWING TITLE:		
01	1LPFTPG3/2		
Project No.:	PH. 01	R. 0	1/1



Front View



Top View



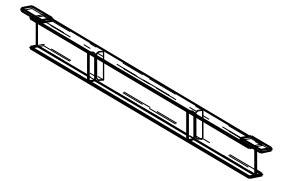
A - A

BILL OF MATERIAL

MATERIAL LIST FOR ONE ASSEMBLY No. Required :

Grid: **D-E/6-5** **1PG4/9** **2**

Mark	Grade	Size	No	Length	Weight PC
1b/3	ST37	PL15*150	2	4338	76.62
1b/22	ST37	PL8*300	1	4338	81.72
1bi/4	ST37	PL12*71	4	300	1.97
1bi/13	ST37	PL25*120	2	400	9.42
Total Weigth(Kg):					261.67



3D

GENERAL NOTES

- 1- جهات شمال و جنوب درستونها، جهات جغرافیایی محل نصب میباشد.
- 2- جهت نصب حتما و فقط در قسمت بالای تیر علامت زده شود.

Legend:

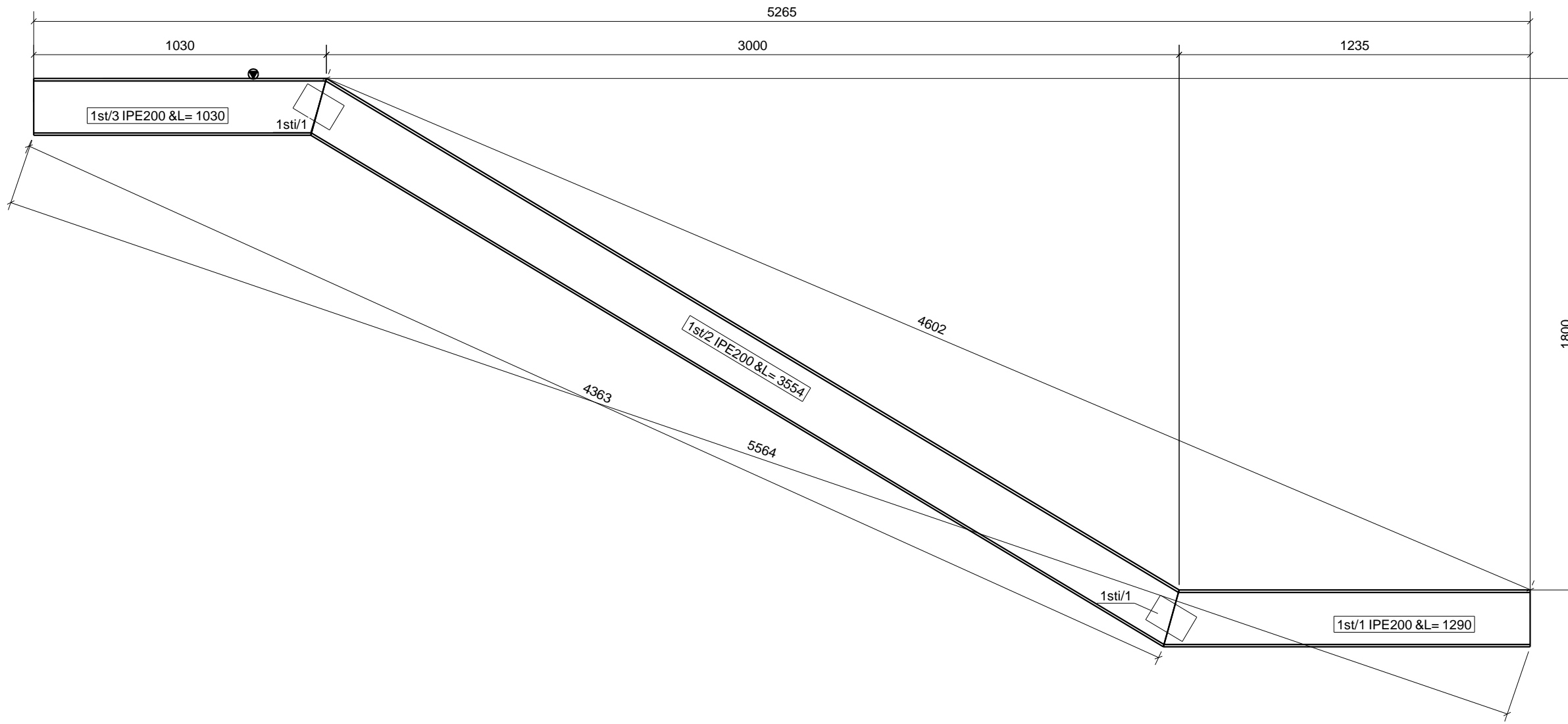
lci=Part 01-For Col-Intricity	lii=Part 01-For IPE Beams-Intricity
lB1=Beam And 01 Th Type At Part 01	ST=Stair
lbi=Part 01-For Beams-Intricity	LP=Loose Part
lC1=Collumns And 01 Th Type At Part 01	
li=Part 01-IPE Beam	

General Corner Welding Dimensions For Beams&Collumns

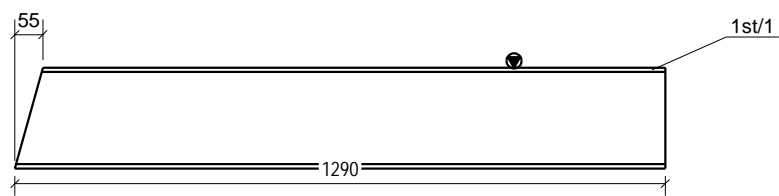
Section	C.W.D/Sections	C.W.D/Sections	C.W.D/Sections	C.W.D/Sections	C.W.D/Sections	C.W.D/Sections	General Notes:
CSA 12	PG1	12					چوش باقی اتصالات با بعد هلت دهر ضماخت ورق نازکتر اجرا گردد.
CSB 12	PG2	8					
CSC 12	PG3	6					
CSD 10	PG4	6					
CSE 8	PG5	6					

0	01	1394-09-30	Rad.Engineer	Rad.Engineer	Rad.Engineer
REV.	Phase Number:	Created date:	Modeled By:	Checked By:	Project Manager:

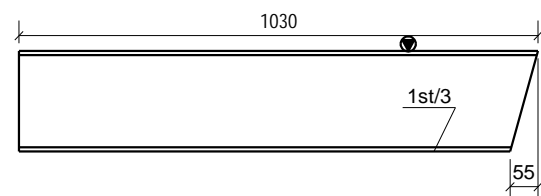
DESCRIPTION:	PROJECT TITLE:	CONTRACTORE:	
SCALE:	مجتمع مسكوني تجاري جنب آقای شجاعی		
UNIT:	OWNER:	جناب آقای شجاعی	
FIELD:	CONSULTANT:	جناب آقای مهندس درخشنده	
PHASE:	DRAWING TITLE:		
01	1PG4/9		
Project No.:	PH. 01	R. 0	1/1



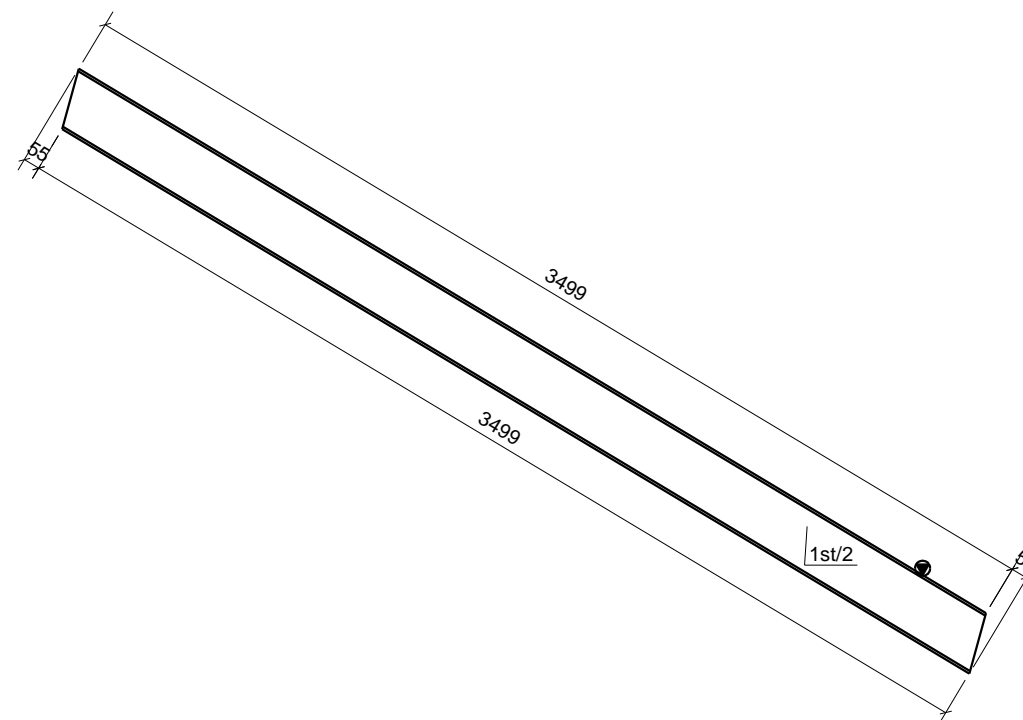
Front View



Front View



Front View



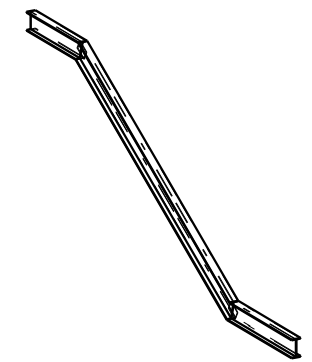
Front View

BILL OF MATERIAL

MATERIAL LIST FOR ONE ASSEMBLY No. Required :

Grid: **G-H/3-2** **1ST/2** **6**

Mark	Grade	Size	No	Length	Weight PC
1st/1	ST37	IPE200	1	1290	28.87
1st/2	ST37	IPE200	1	3554	79.51
1st/3	ST37	IPE200	1	1030	23.04
1sti/1	ST37	PL8*100	2	150	0.94
Total Weigth(Kg):					133.31



3D

GENERAL NOTES

- 1- جهات شمال و جنوب درستونها، جهات جغرافیایی محل نصب میباشد.
- 2- جهت نصب حتما و فقط در قسمت بالای تیر علامت زده شود.

Legend:

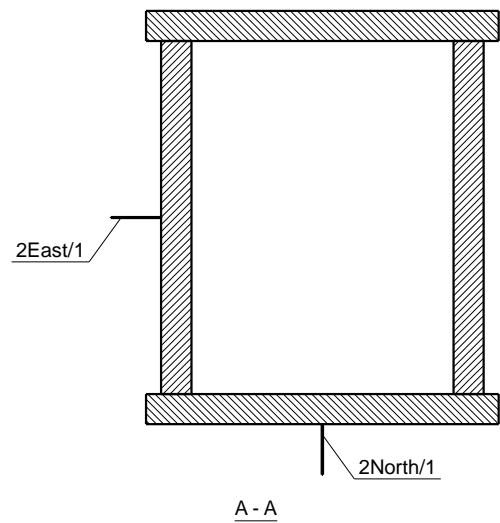
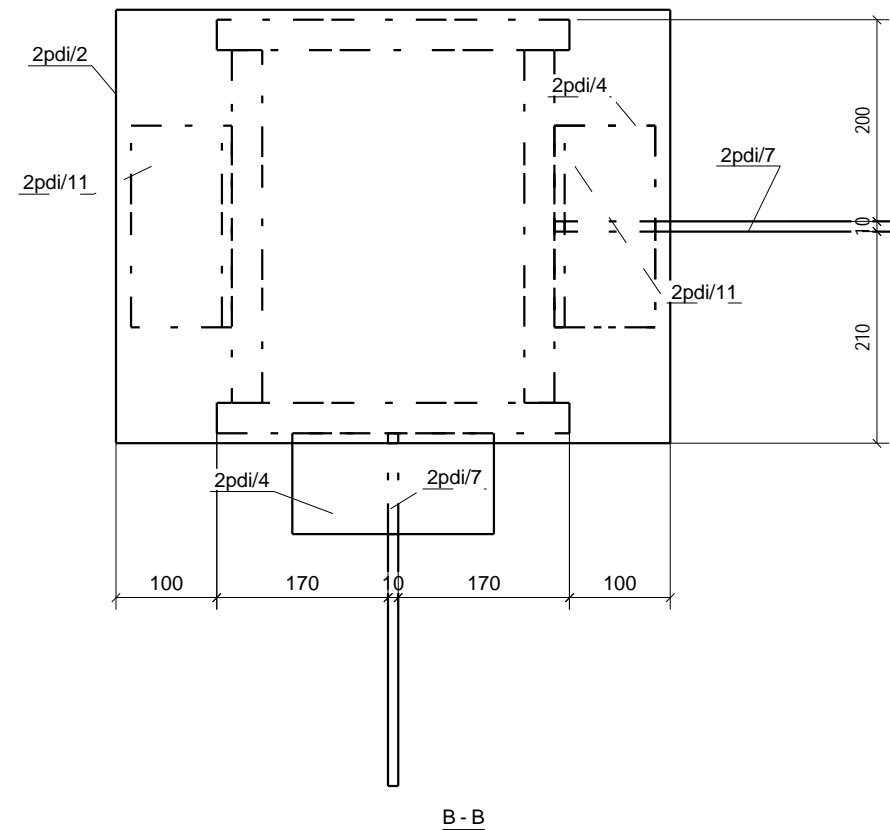
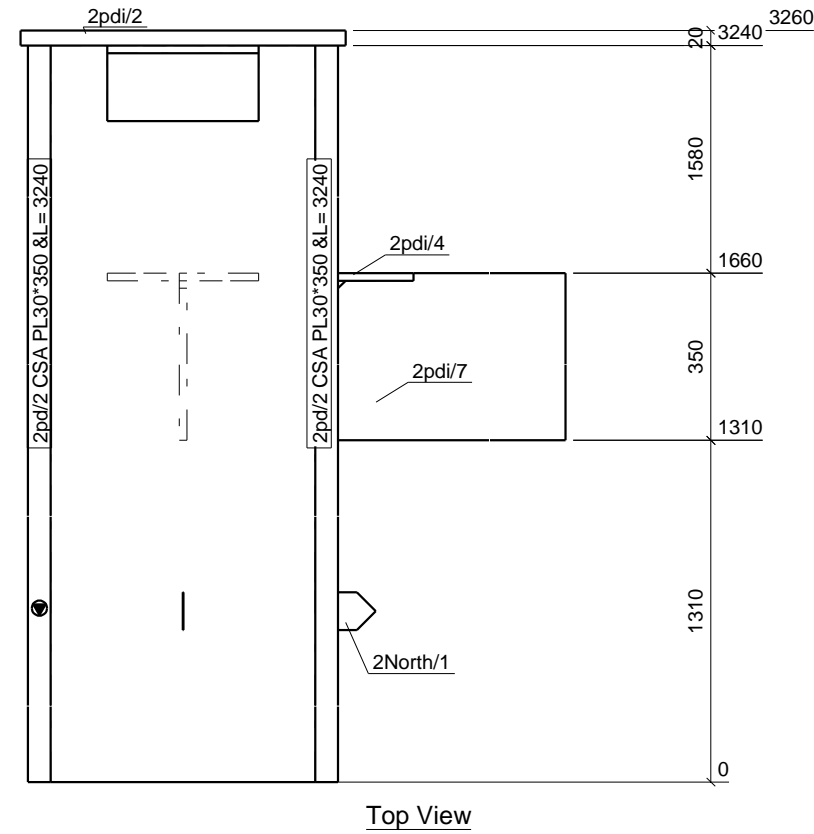
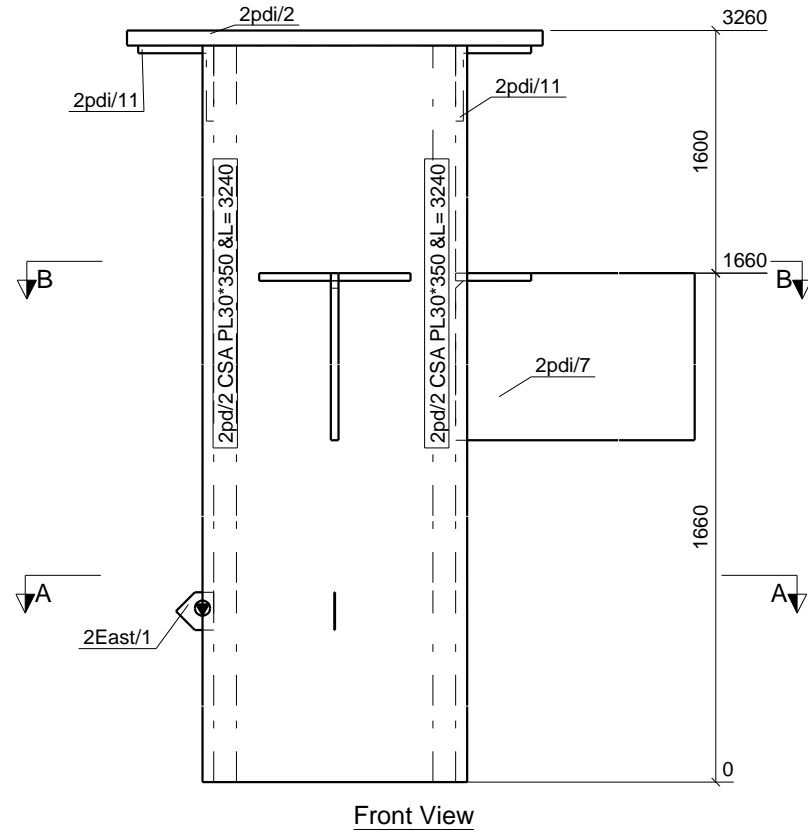
lci=Part 01-For Col-Intricity	lii=Part 01-For IPE Beams-Intricity
lbi=Part 01-For Beams-Intricity	ST=Stair
lci=Collumns And 01 Th Type At Part 01	LP=Loose Part
li=Part 01-IPE Beam	

General Corner Welding Dimensions For Beams&Collumns

Section	C.W.D/Sections	C.W.D/Sections	C.W.D/Sections	C.W.D/Sections	C.W.D/Sections	C.W.D/Sections	C.W.D/Sections	General Notes:
CSA 12	PG1	12						جوش باقی انصالات با بعد هفت ده ضخامت ورق نازکتر اجرا گردد.
CSE 12	PG2	8						
CSD 12	PG3	6						
CSD 10	PG4	6						
CSE 8	PG5	6						

0	01	1394-09-30	Rad.Engineer	Rad.Engineer	Rad.Engineer
REV.	Phase Number:	Created date:	Modeled By:	Checked By:	Project Manager:

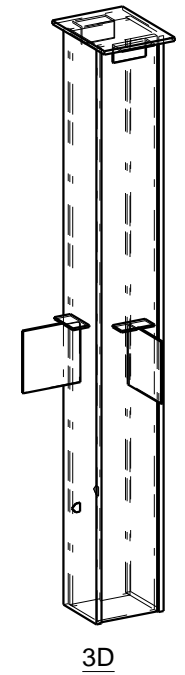
DESCRIPTION	PROJECT TITLE:	CONTRACTOR:	
SCALE:	مجمع مسكوني تجاري جنب آقاي شجاعی		
N.T.S	OWNER:	جناب آقای شجاعی	
UNIT:	CONSULTANT:	جناب آقای مهندس درخشنده	
mm	DRAWING TITLE:		
FIELD:	Structure		
PHASE:	01	1ST/2	
Project No.:	- PH. 01	R. 0	1/1



توجه: جوش ستونک به بیس های بالا و پایین به صورت نفوذی است، لذا لازم است که هر دوسر گوشت ستونکها به صورت کونیک شده اجرا شود تا در محل نصب جوش نفوذی تکمیلی اجرا شود.

BILL OF MATERIAL

MATERIAL LIST FOR ONE ASSEMBLY						No. Required :
Grid: C-D/8			2PD/9		1	
Mark	Grade	Size	No	Length	Weight PC	
2East/1	ST37	PL1*50	1	50	0.01	
2North/1	ST37	PL1*50	1	50	0.01	
2pd/2	ST37	PL30*350	4	3240	267.06	
2pdi/2	ST37	PL20*550	1	430	37.13	
2pdi/4	ST37	PL10*200	2	100	1.57	
2pdi/7	ST37	PL10*350	2	350	9.53	
2pdi/11	ST37	L100*10	2	200	3.01	
Total Weigth(Kg):					1133.62	



GENERAL NOTES

- 1- جهات شمال و جنوب درستونها، جهات جغرافیایی محل نصب میباشد.
- 2- جهت نصب حتما و فقط در قسمت بالای تیر علامت زده شود.

Legend:

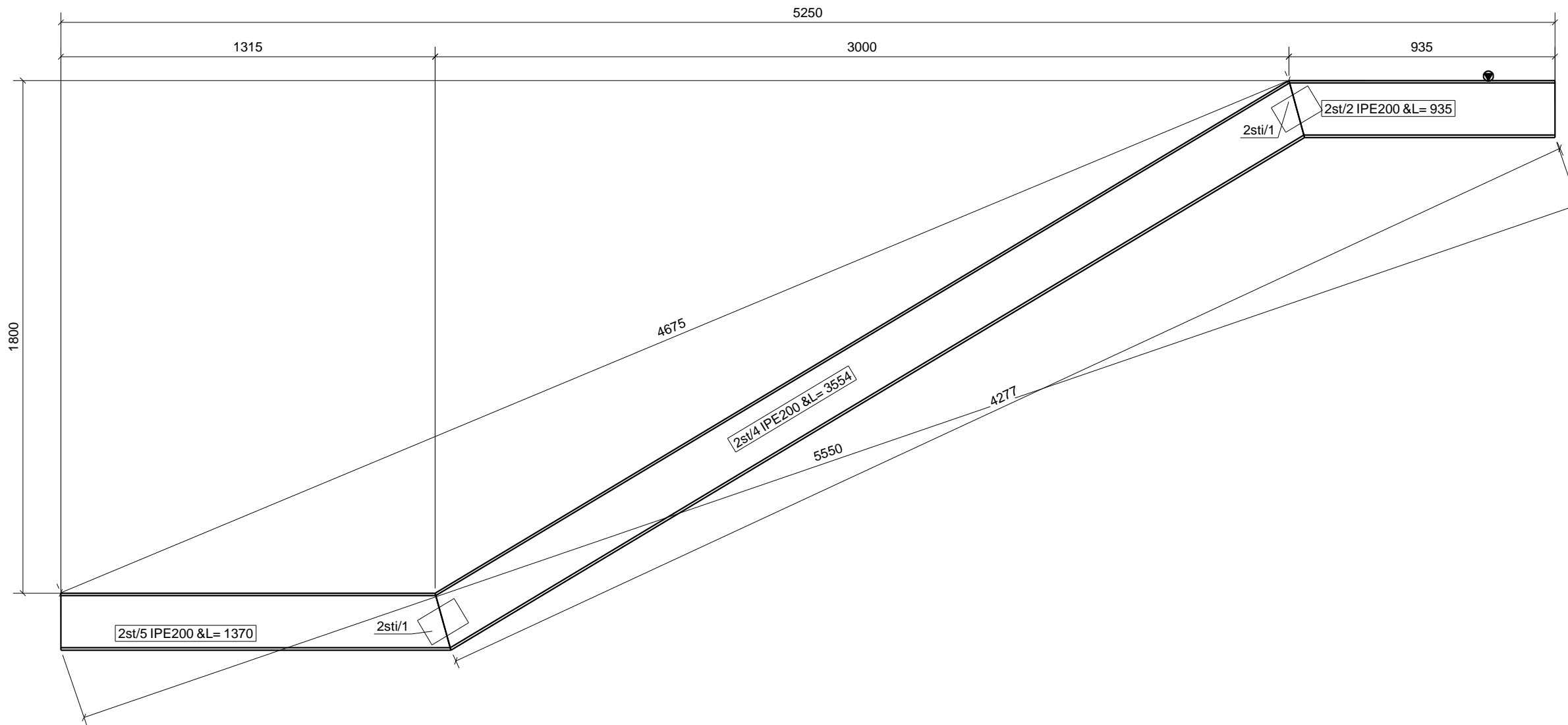
lci=Part 01-For Col-Intracacy	lii=Part 01-For IPE Beams-Intracacy
lB1=Beam And 01 Th Type At Part 01	ST=Stair
lbi=Part 01-For Beams-Intracacy	LP=Loose Part
lC1=Collumns And 01 Th Type At Part 01	
li=Part 01-IPE Beam	

General Corner Welding Dimensions For Beams&Collumns

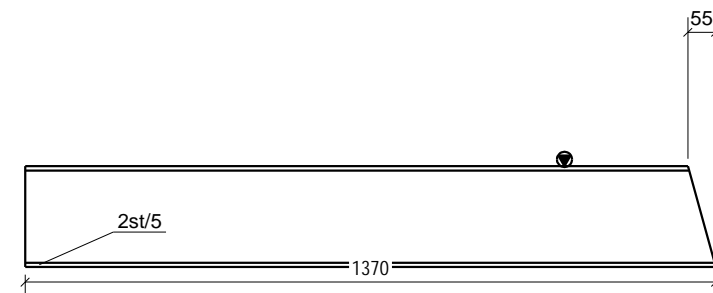
Sections	C.W.D/Sections	C.W.D/Sections	C.W.D/Sections	C.W.D/Sections	C.W.D/Sections	C.W.D/Sections	General Notes:
CSA 12	PG1 12						جوش باقی اتصالات با بعد هفت ده ضخامت ورق نازکتر اجرا گردد.
CSE 12	PG2 8						
CSC 12	PG3 6						
CSD 10	PG4 6						
CSE 8	PG5 6						

0	02	1395-02-30	Rad.Engineer	Rad.Engineer	Rad.Engineer
REV.	Phase Number:	Created date:	Modeled By:	Checked By:	Project Manager:

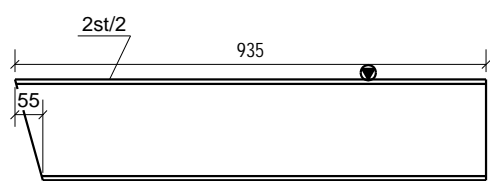
DESCRIPTION:	PROJECT TITLE:	CONTRACTOR:	
SCALE:	OWNER:		
N.T.S	جناب آقای شجاعی		
UNIT:	OWNER:	جناب آقای شجاعی	
mm			
FIELD:	CONSULTANT:	جناب آقای مهندس درخشنده	
Structure			
PHASE:	DRAWING TITLE:		
02	2PD/9		
Project No.:	PH. 02	R. 0	1/1



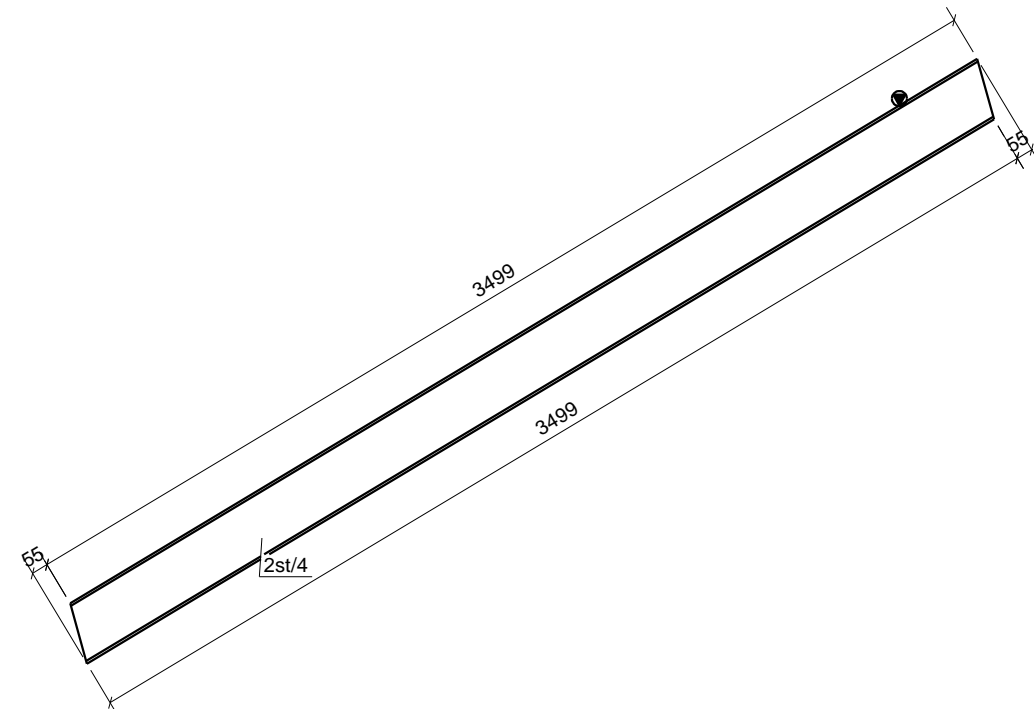
Front View



Front View



Front View



Front View

BILL OF MATERIAL

MATERIAL LIST FOR ONE ASSEMBLY No. Required :

Grid: **G-H/2-1** **2ST/2** **4**

Mark	Grade	Size	No	Length	Weight PC
2st/2	ST37	IPE200	1	935	20.92
2st/4	ST37	IPE200	1	3554	79.51
2st/5	ST37	IPE200	1	1370	30.66
2sti/1	ST37	PL8*100	2	150	0.94
Total Weigth(Kg):					132.97



3D

GENERAL NOTES

- 1- جهات شمال و جنوب درستونها، جهات جغرافیایی محل نصب میباشد.
- 2- جهت نصب حتما و فقط در قسمت بالای تیر علامت زده شود.

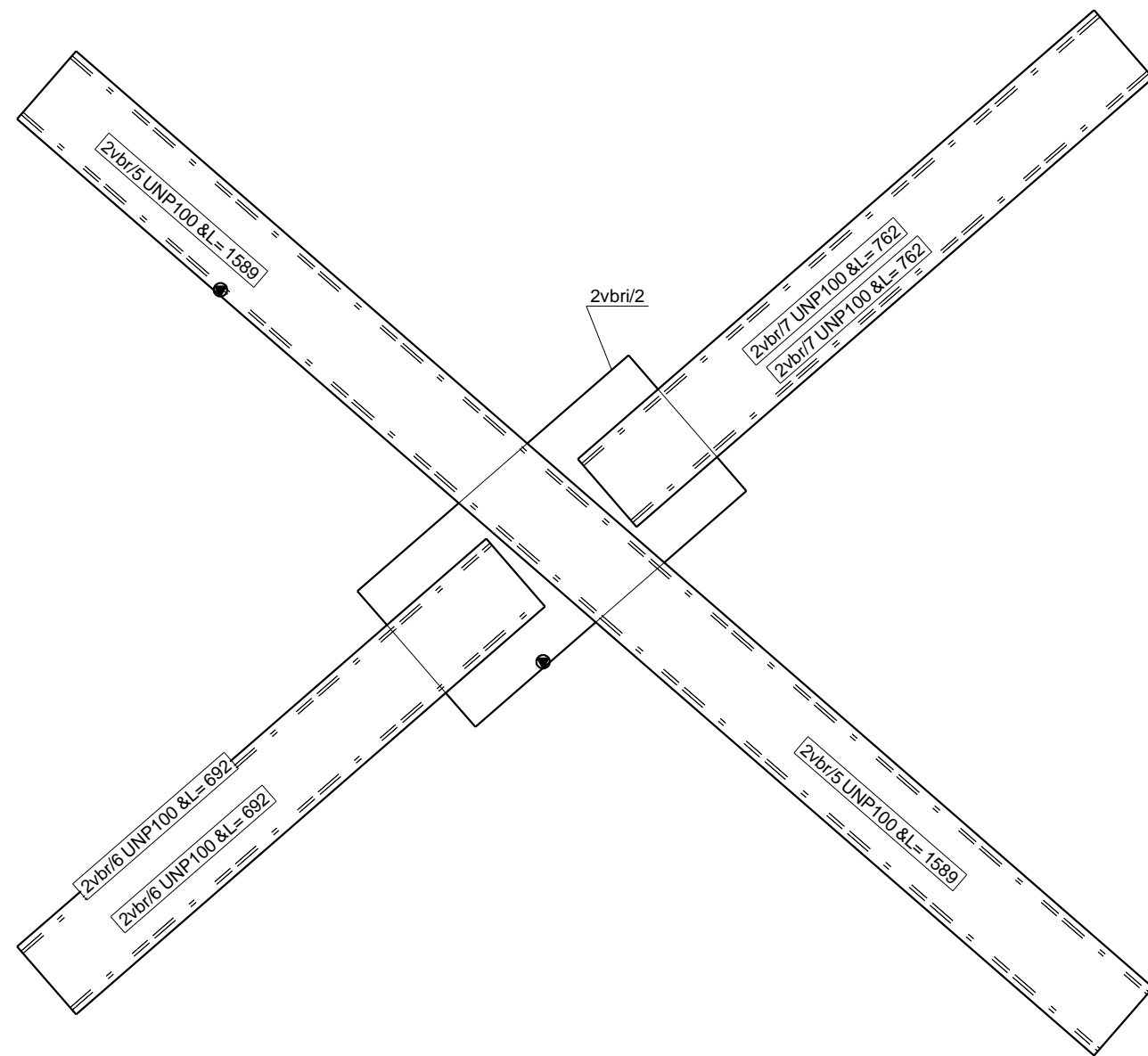
Legend:

lci=Part 01-For Col-Intricity	lii=Part 01-For IPE Beams-Intricity
IB1=Beam And 01 Th Type At Part 01	ST=Stair
lbi=Part 01-For Beams-Intricity	LP=Loose Part
ICI=Collumns And 01 Th Type At Part 01	
li=Part 01-IPE Beam	

General Corner Welding Dimensions For Beams&Collumns

Section	C.W.D/Sections	C.W.D/Sections	C.W.D/Sections	C.W.D/Sections	C.W.D/Sections	C.W.D/Sections	C.W.D/Sections	General Notes:
CSA 12	FG1 12							چوش باقی اتصالات با بعد هفت ده ضخامت ورق نازکتر اجرا گردد.
CSE 12	FG2 8							
CSC 12	FG3 6							
CSD 10	FG4 6							
CSE 8	FG5 6							

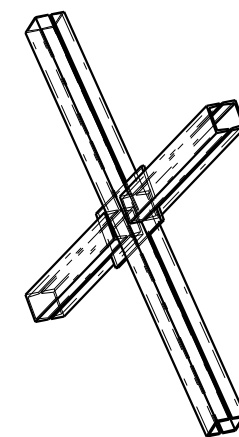
0	02	1395-02-30	Rad.Engineer	Rad.Engineer	Rad.Engineer
REV.	Phase Number:	Created date:	Modeled By:	Checked By:	Project Manager:
DESCRIPTION	PROJECT TITLE:	CONTRACTORE:			
SCALE:	N.T.S	مجتمع مسكوني تجاري جنب آقاي شجاعی			
UNIT:	mm	OWNER:	جناب آقاي شجاعی		
FIELD:	Structure	CONSULTANT:	جناب آقاي مهندس درخشنده		
PHASE:	02	DRAWING TITLE:	2ST/2		
Project No.:	- PH. 02	R. 0	1/1		



Front View

BILL OF MATERIAL

MATERIAL LIST FOR ONE ASSEMBLY				No. Required :	
Grid: C-D/8-7			2VBR/5		4
Mark	Grade	Size	No	Length	Weight PC
2vbr/5	ST37	UNP100	2	1589	16.84
2vbr/6	ST37	UNP100	2	692	7.33
2vbr/7	ST37	UNP100	2	762	8.07
2vbri/2	ST37	PL10*200	1	400	6.28
Total Weigth(Kg):					70.76



3D

GENERAL NOTES

- 1- جهات شمال وجنوب درستونها، جهات جغرافیایی محل نصب میباشد.
- 2- جهت نصب حتما فقط در قسمت بالای تیر علامت زده شود.

Legend:

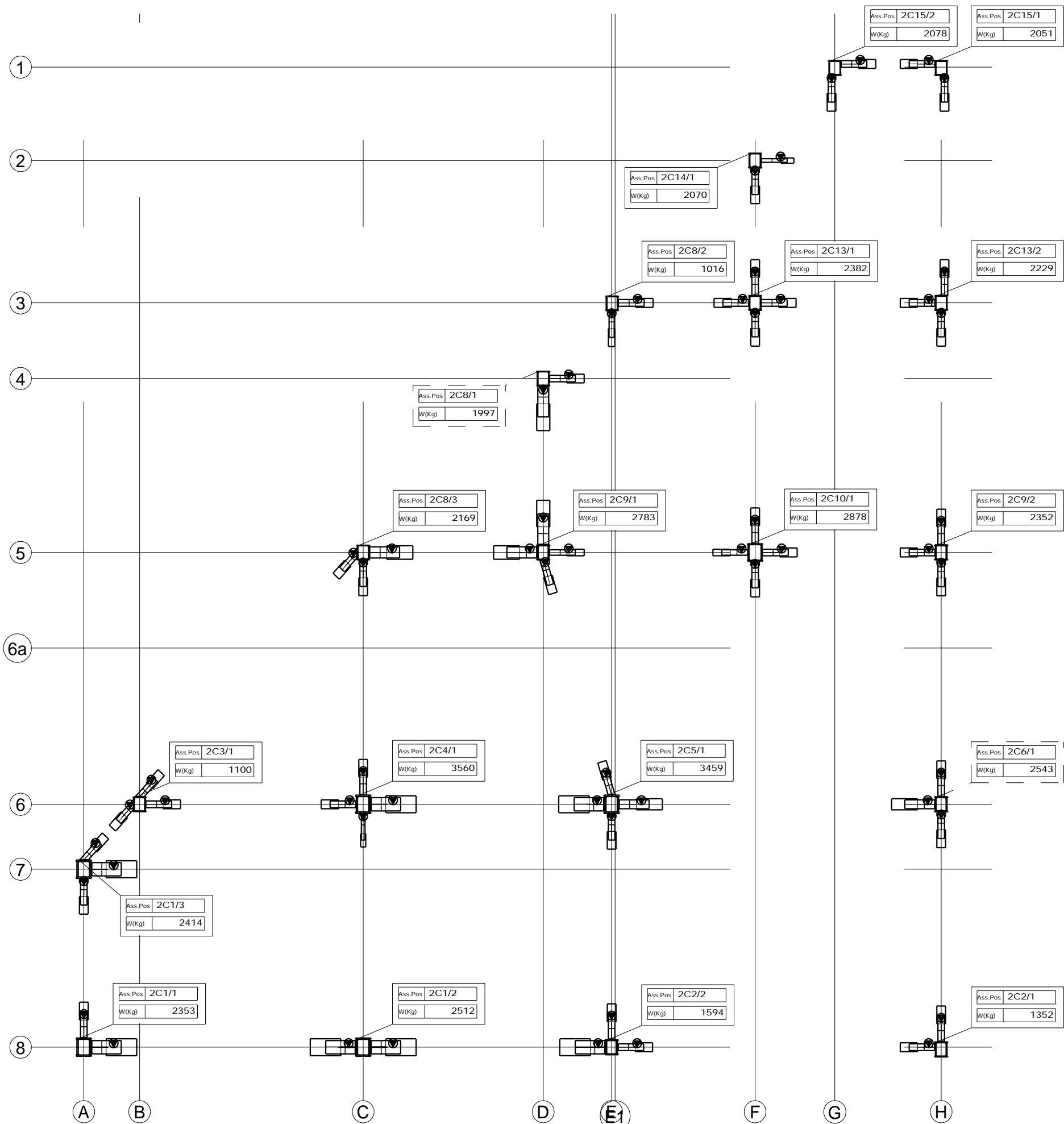
lci=Part 01-For Col-Intricity	lii=Part 01-For IPE Beams-Intricity
lbi=Part 01-For Beams-Intricity	ST=Stair
lci=Collumns And 01 Th Type At Part 01	LP=Loose Part
li=Part 01-IPE Beam	

General Corner Welding Dimensions For Beams&Collumns

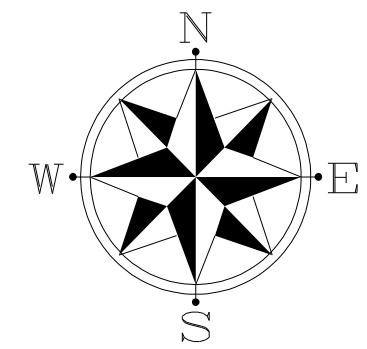
Section	C.W.D/Sections	C.W.D/Sections	C.W.D/Sections	C.W.D/Sections	C.W.D/Sections	C.W.D/Sections	C.W.D/Sections	General Notes:
CSA 12	PG1	12						جوش باقی اتصالات با بعد هفت ده ضخامت ورق نازکتر اجرا گردد.
CSE 12	PG2	8						
CSC 12	PG3	6						
CSD 10	PG4	6						
CSE 8	PG5	6						

0	02	1395-02-30	Rad.Engineer	Rad.Engineer	Rad.Engineer
REV.	Phase Number:	Created date:	Modeled By:	Checked By:	Project Manager:

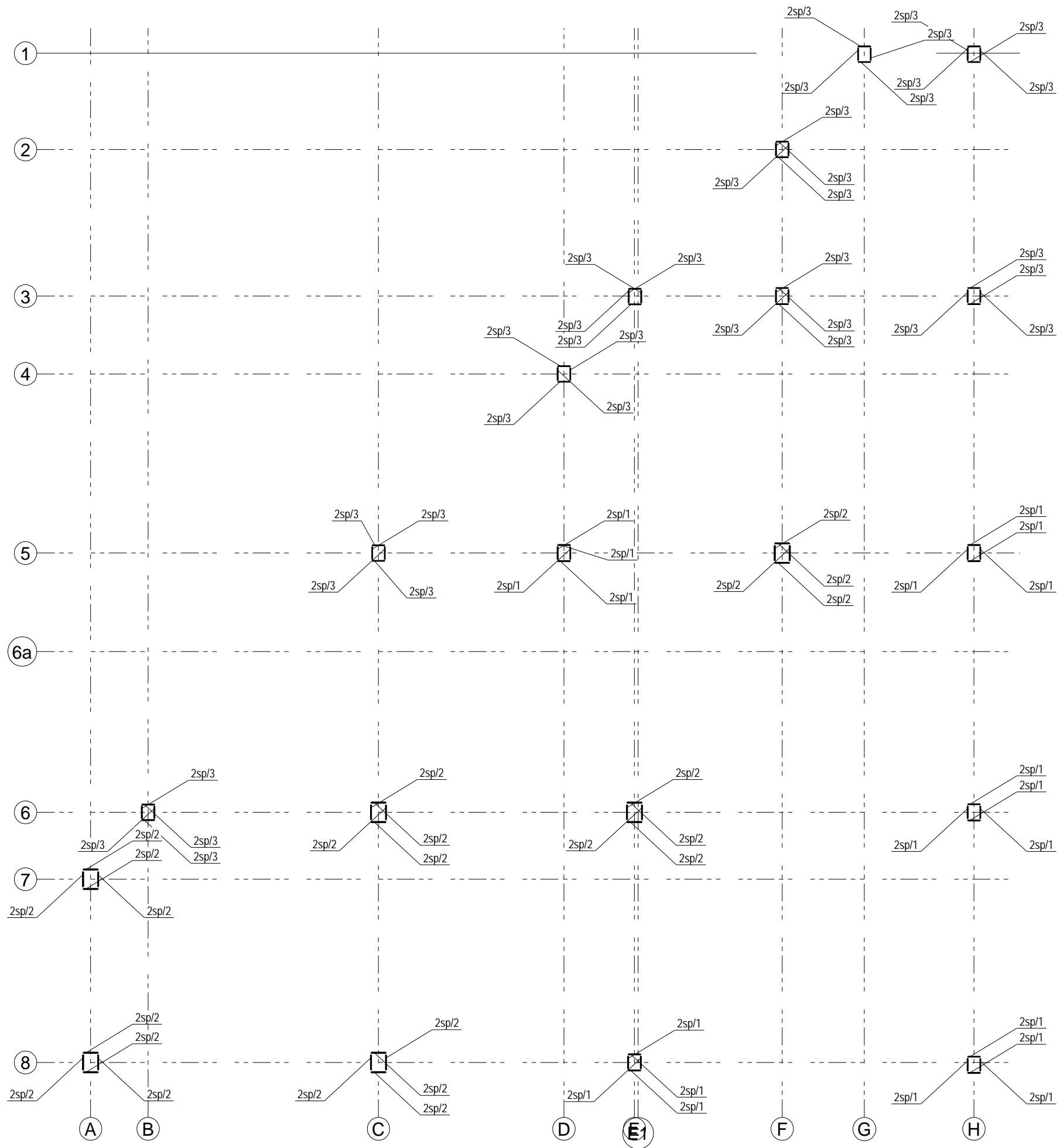
DESCRIPTION	PROJECT TITLE:	CONTRACTORE:	
SCALE:	مجتمع مسكوني تجاري جنب آقای شجاعی		
UNIT:	OWNER:	جناب آقای شجاعی	
FIELD:	CONSULTANT:	جناب آقای مهندس درخشنده	
PHASE:	DRAWING TITLE:		
02	2VBR/5		
Project No.:	- PH. 02	R. 0	1/1



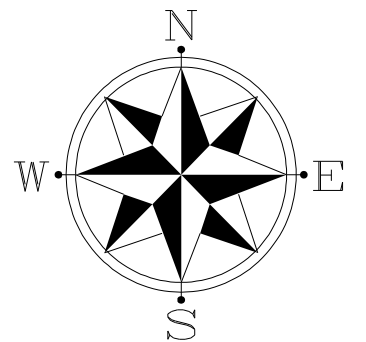
PLAN +3.20
1:100



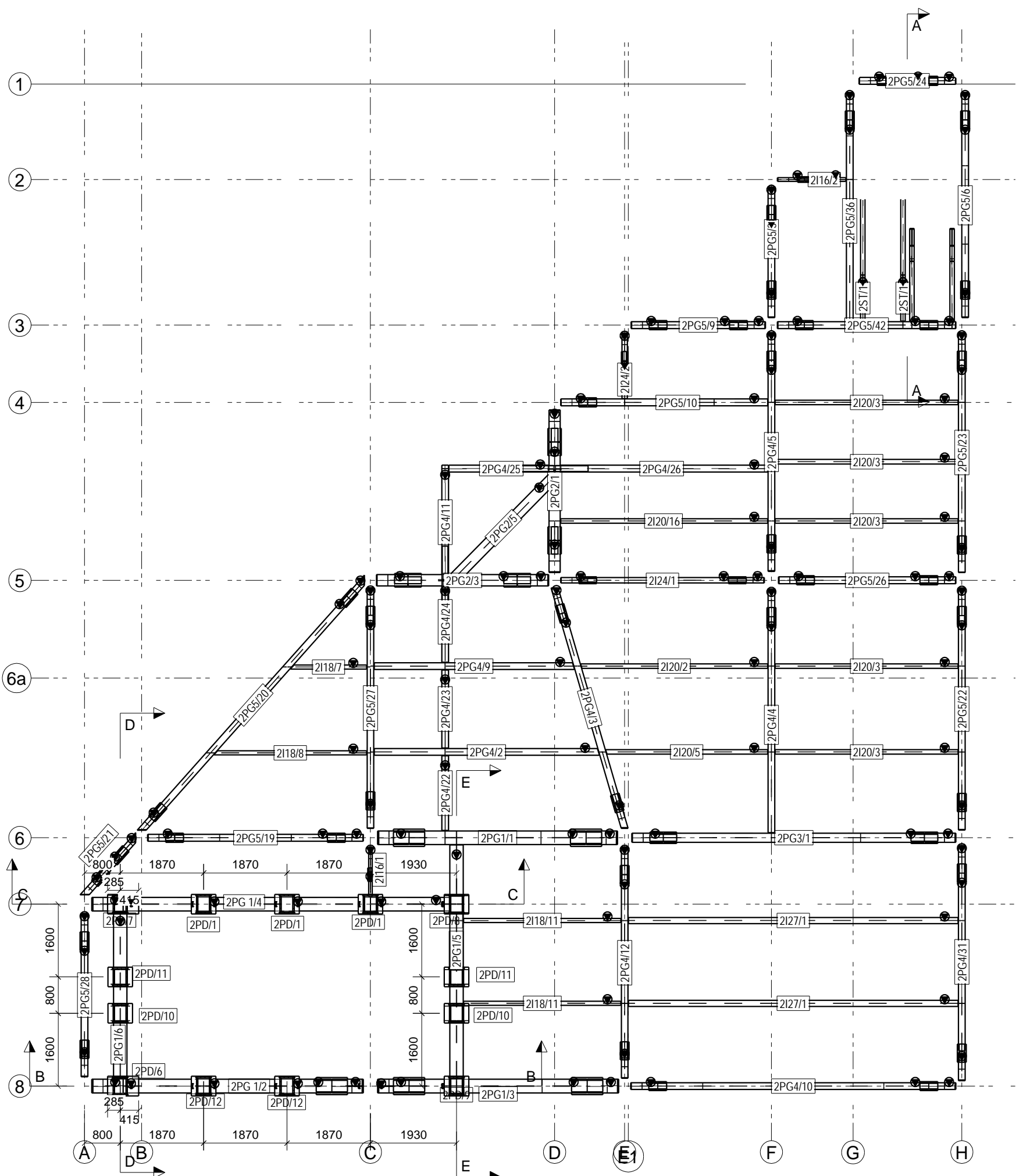
0	02	1395-02-30	Rad.Engineer	Rad.Engineer	Rad.Engineer
REV.	Phase Number:	Created date:	Modeled By:	Checked By:	Project Manager:
DESCRIPTION	PROJECT TITLE:		CONTRACTOR:		
SCALE:	N.T.S				
UNIT:	mm		OWNER:		
FIELD:	Structure		جناب آقای شجاعی جناب آقای مهندس درخشنده		
PHASE:	02		DRAWING TITLE:		
			Columns'S Key Plan For 02Th Part&Splices'S Key Plan		
Project No.:		- PH. 02	R. 0	1/2	



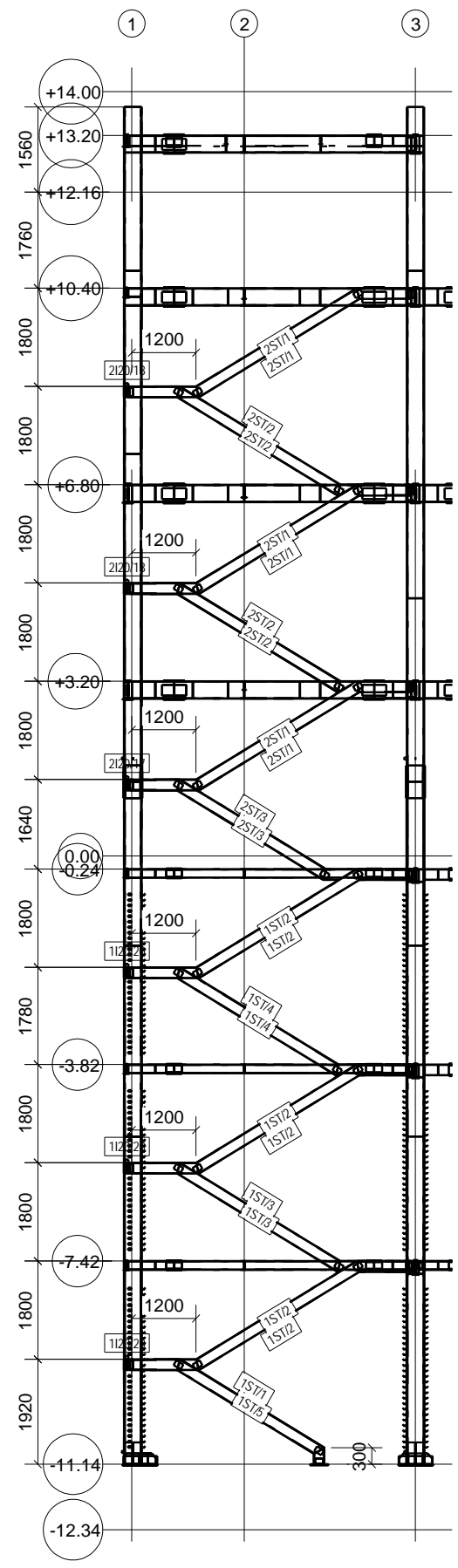
توجه: کدهای اسپالیسها، کدهای سینگل پارت میباشد.



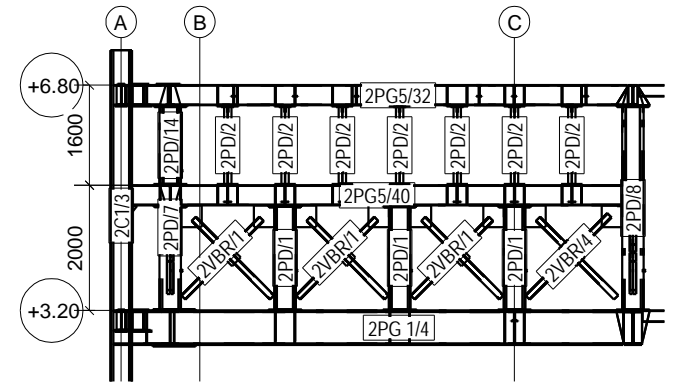
0	02	1395-02-30	Rad.Engineer	Rad.Engineer	Rad.Engineer
REV.	Phase Number:	Created date:	Modeled By:	Checked By:	Project Manager:
DESCRIPTION	PROJECT TITLE:		CONTRACTOR:		
SCALE:	N.T.S				
UNIT:	mm		OWNER:		
FIELD:	Structure		جناب آقای شجاعی		
PHASE:	02		CONSULTANT:		
	DRAWING TITLE:		جناب آقای مهندس درخشنده		
	02		Collumns'S Key Plan For 02Th Part&Splices'S Key Plan		
Project No.:	- PH. 02	R. 0	2/2		



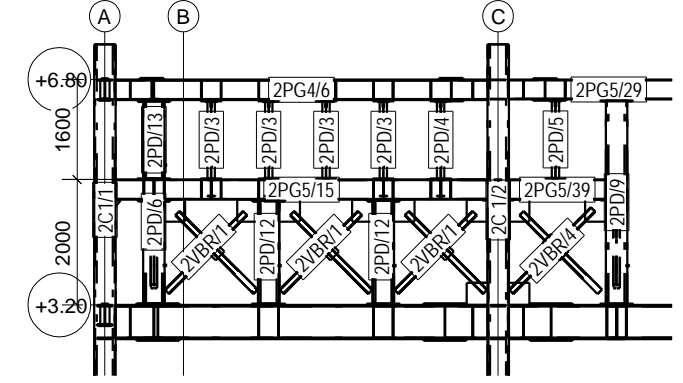
PLAN +3.20
1:100



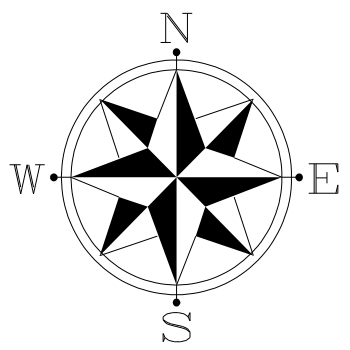
A - A
1:125



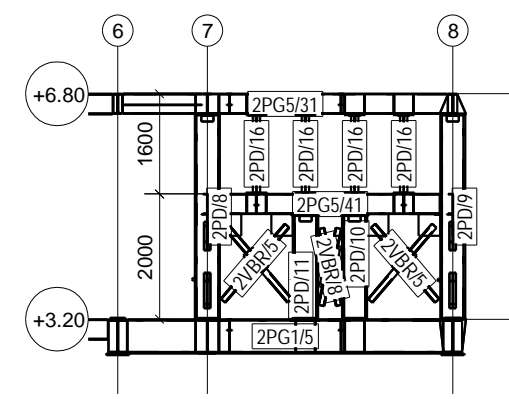
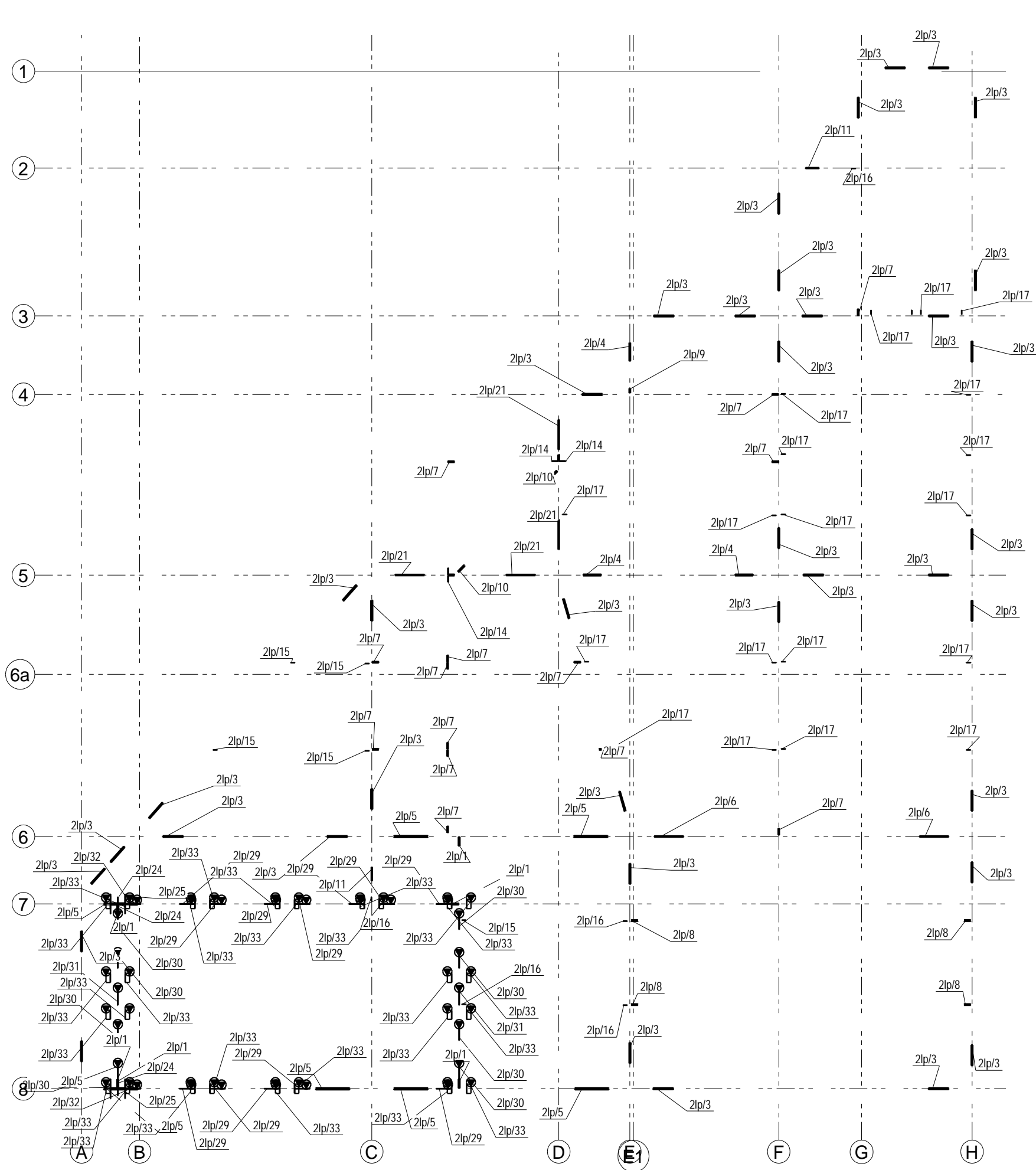
C - C
1:125



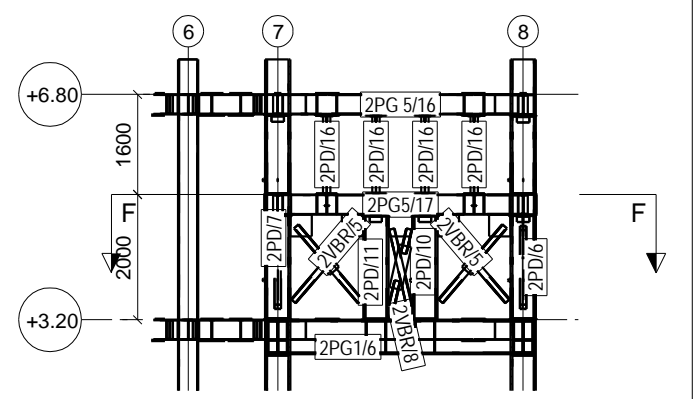
B - B
1:125



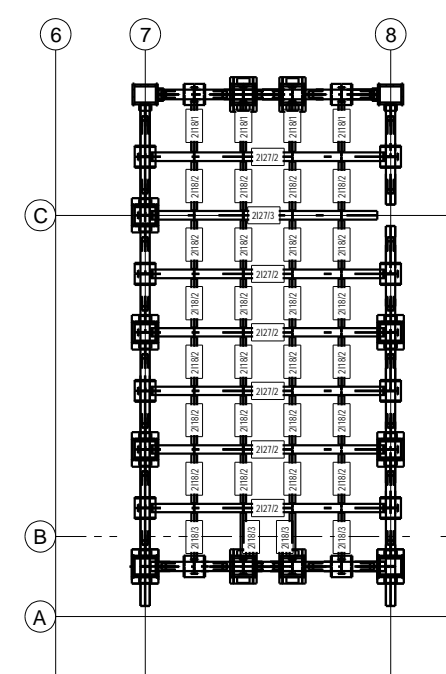
0	02	1395-02-30	Rad.Engineer	Rad.Engineer	Rad.Engineer
REV.	Phase Number:	Created date:	Modeled By:	Checked By:	Project Manager:
DESCRIPTION	PROJECT TITLE:		CONTRACTOR:		
SCALE:	N.T.S				
UNIT:	mm		OWNER:		
FIELD:	Structure		جناب آقای شجاعی جناب آقای مهندس درخشنده		
PHASE:	02		DRAWING TITLE:		
Project No.:		- PH. 02		R. 0	1/2



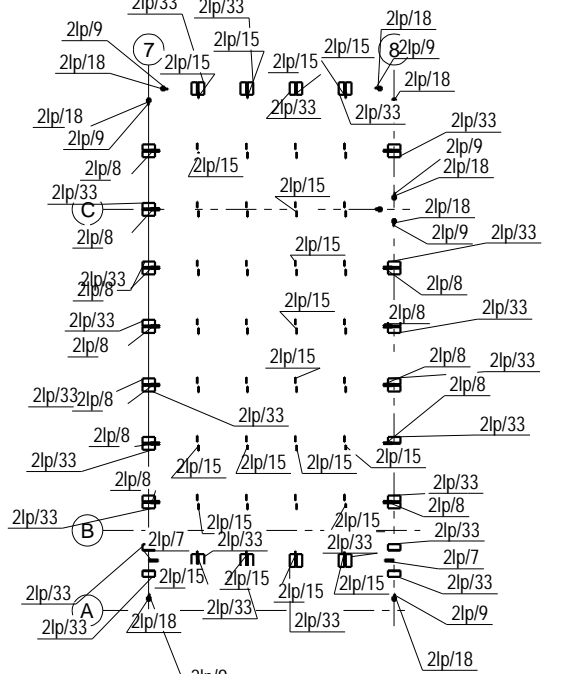
E - E
1:125



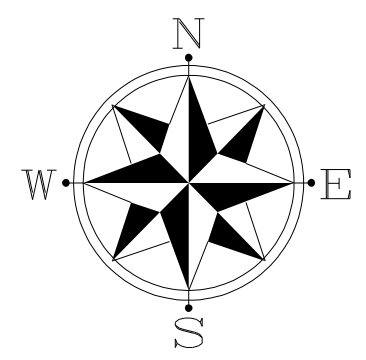
D - D
1:125



F - F
1:125

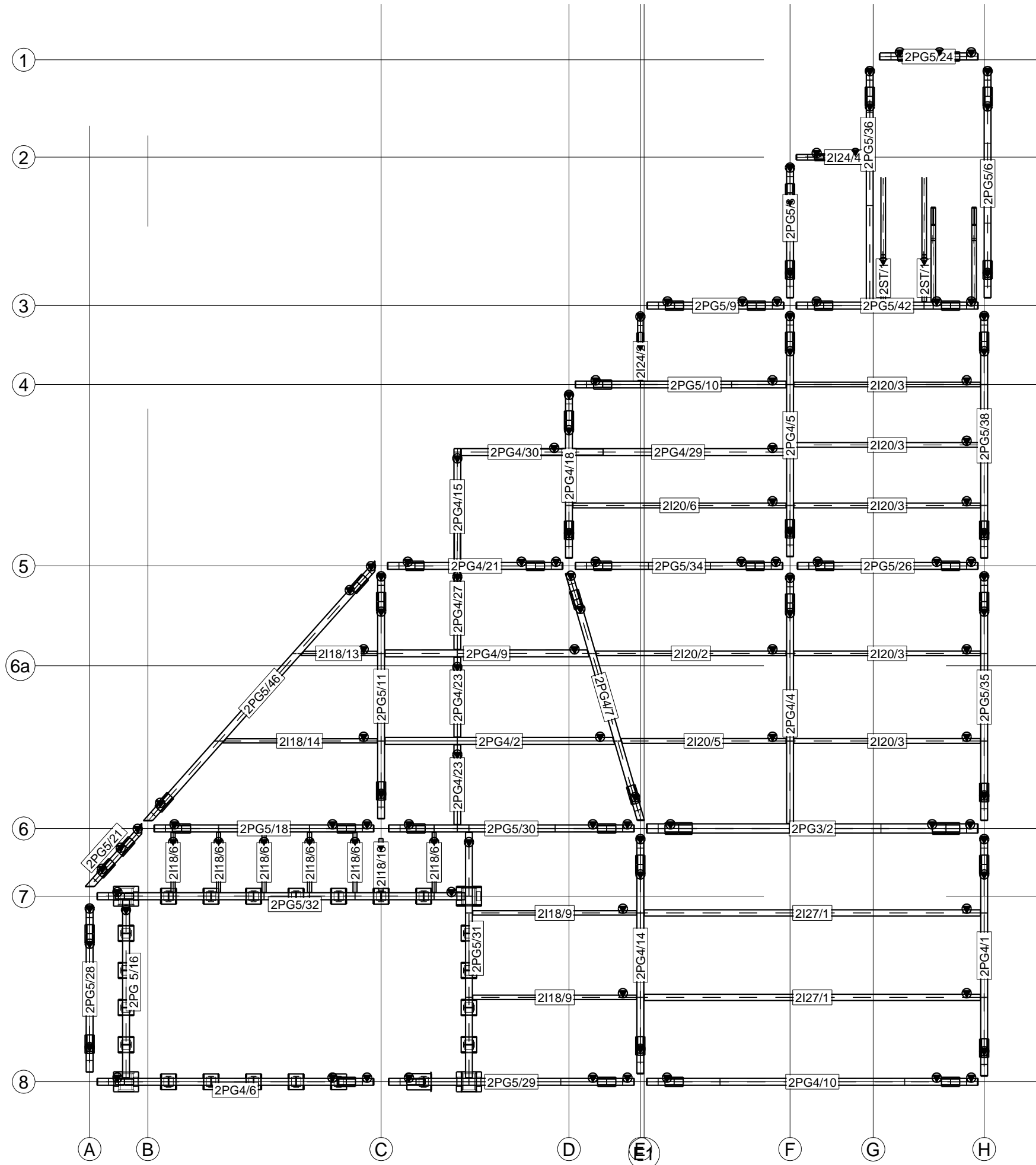


1:125

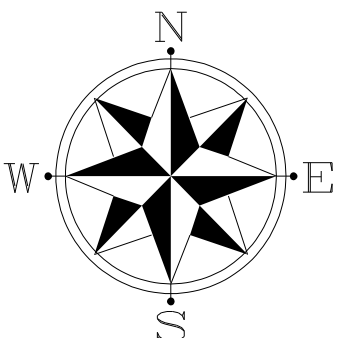


0	02	1395-02-30	Rad.Engineer	Rad.Engineer	Rad.Engineer
REV.	Phase Number:	Created date:	Modeled By:	Checked By:	Project Manager:
DESCRIPTION	PROJECT TITLE:		CONTRACTOR:		
SCALE:	N.T.S				
UNIT:	mm		OWNER:		
FIELD:	Structure		CONSULTANT:		
PHASE:	02		DRAWING TITLE:		
Project No.:		- PH. 02		R. 0	2/2

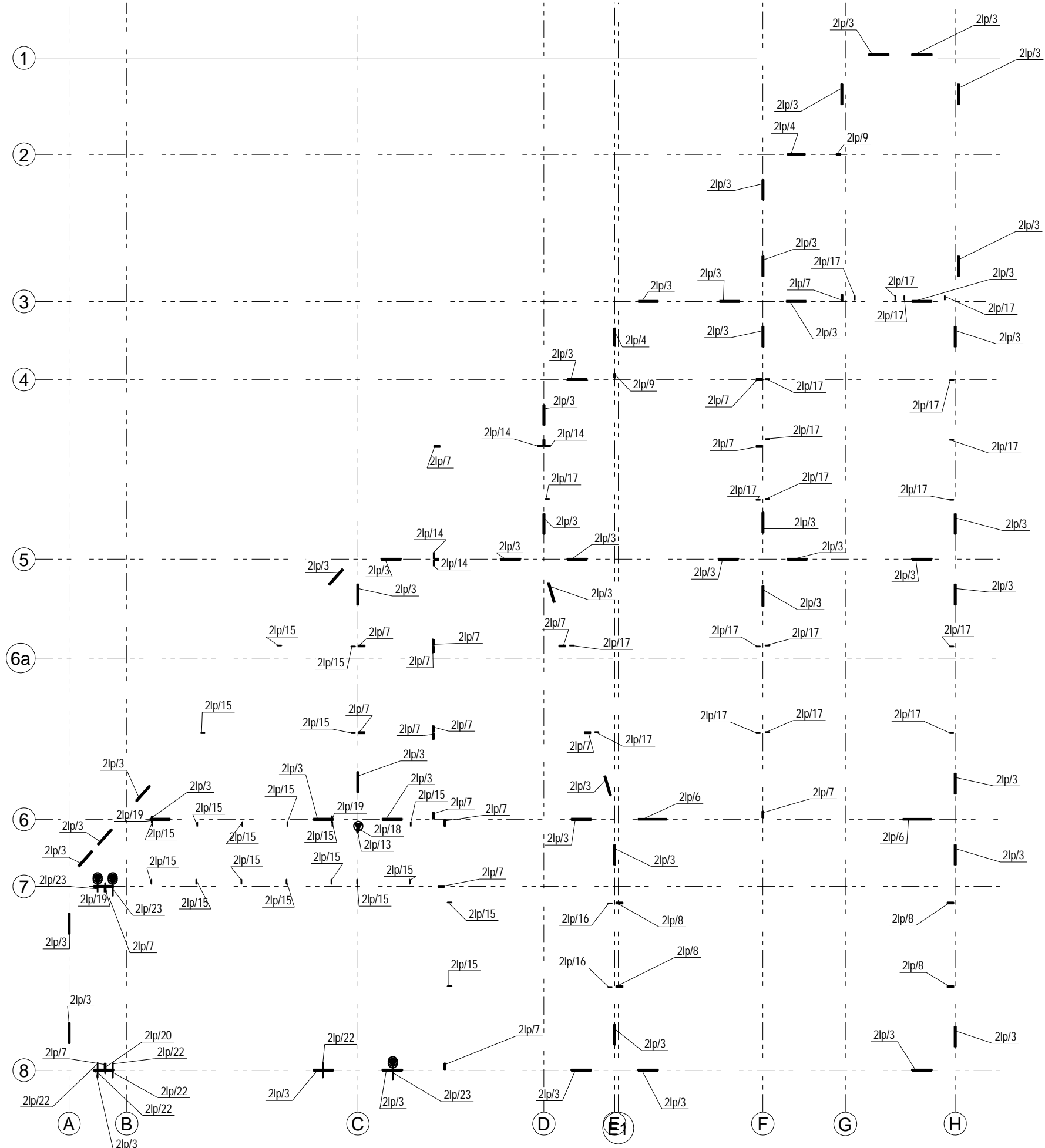
توجه: کدهای لوزپارتهای، کدهای سینگل پارت میباشد.



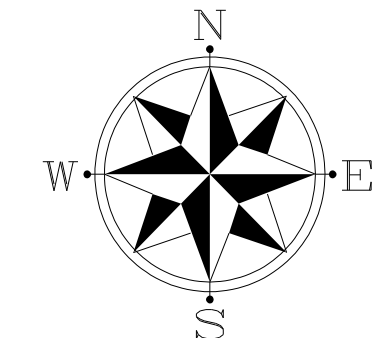
PLAN +6.80
1:100



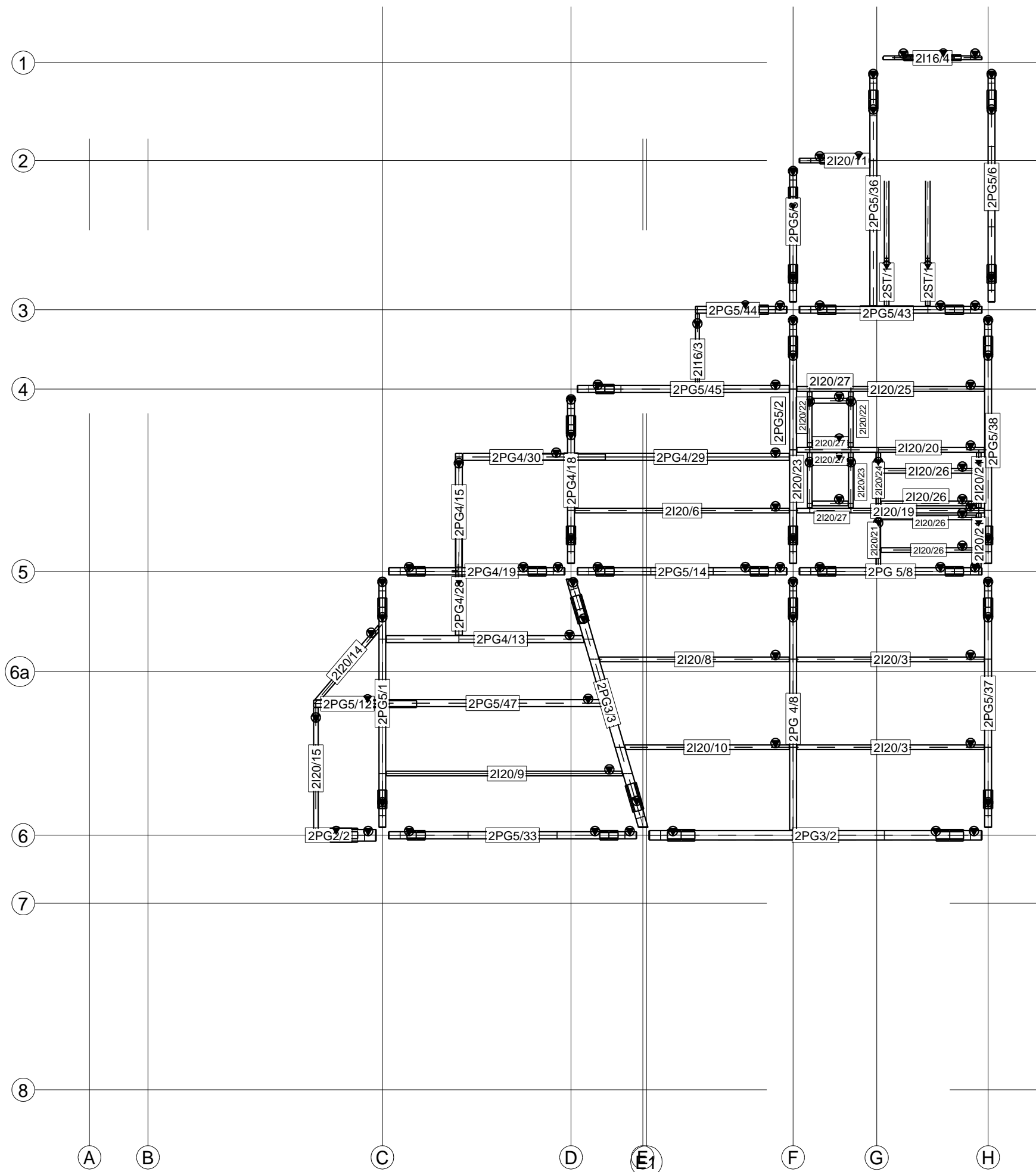
0	02	1395-02-30	Rad.Engineer	Rad.Engineer	Rad.Engineer
REV.	Phase Number:	Created date:	Modeled By:	Checked By:	Project Manager:
DESCRIPTION	PROJECT TITLE:		CONTRACTOR:		
SCALE:	N.T.S				
UNIT:	OWNER:		جناب آقای شجاعی		
FIELD:	CONSULTANT:		جناب آقای مهندس درخشنده		
PHASE:	DRAWING TITLE:				
02	Plan +6.80				
Project No.:	- PH. 02	R. 0	1/2		



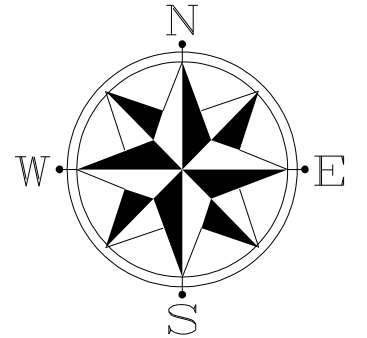
توجه: کدهای لوزپارتهای، کدهای سینگل پارت میباشد.



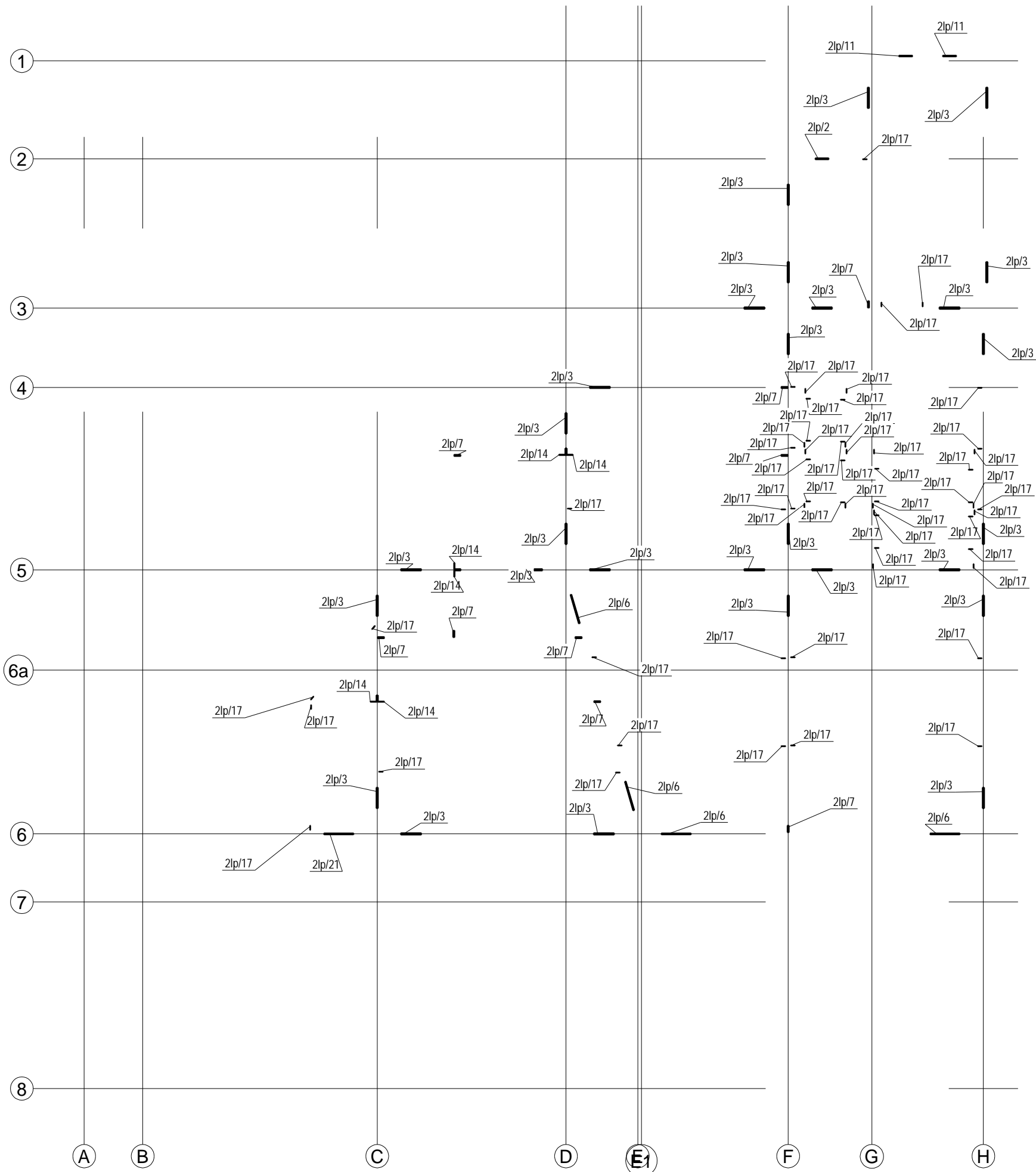
0	02	1395-02-30	Rad.Engineer	Rad.Engineer	Rad.Engineer
REV.	Phase Number:	Created date:	Modeled By:	Checked By:	Project Manager:
DESCRIPTION	PROJECT TITLE:		CONTRACTOR:		
SCALE:	N.T.S				
UNIT:	OWNER:		جناب آقای شجاعی		
FIELD:	CONSULTANT:		جناب آقای مهندس درخشنده		
PHASE:	DRAWING TITLE:				
02	Plan +6.80				
Project No.:		- PH. 02	R. 0	2/2	



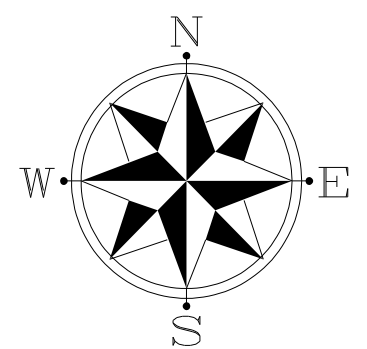
PLAN +10.40
1:100



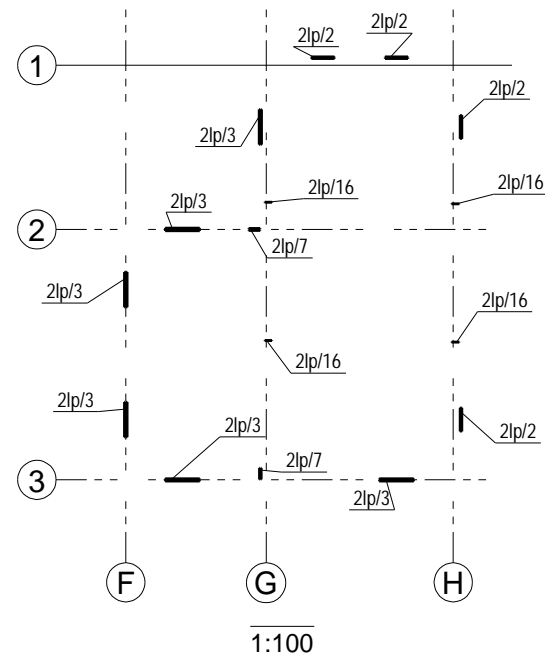
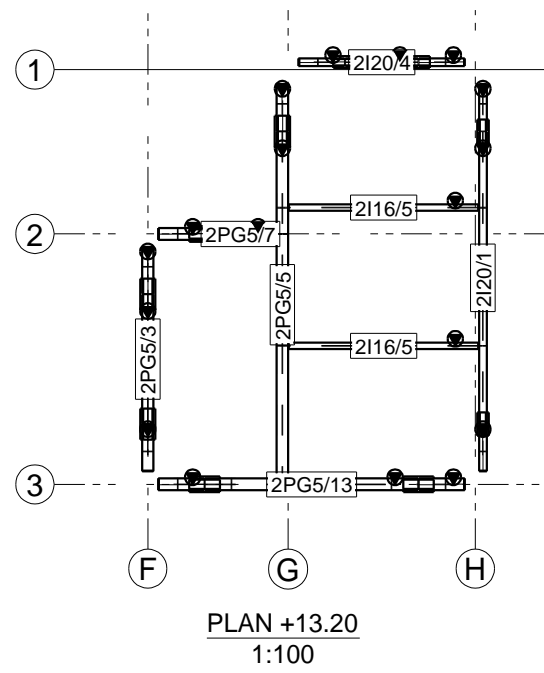
0	02	1395-02-30	Rad.Engineer	Rad.Engineer	Rad.Engineer
REV.	Phase Number:	Created date:	Modeled By:	Checked By:	Project Manager:
DESCRIPTION	PROJECT TITLE:		CONTRACTORE:		
SCALE:	N.T.S				
UNIT:	OWNER:		جناب آقای شجاعی		
FIELD:	CONSULTANT:		جناب آقای مهندس درخشنده		
PHASE :	DRAWING TITLE:				
	02	Plan +10.40			
Project No.:		- PH. 02	R.0	1/2	



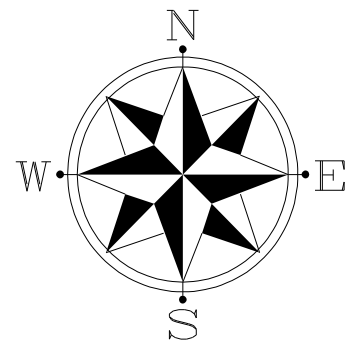
توجه: کدهای لوزپارتهای، کدهای سینگل پارت میباشد.



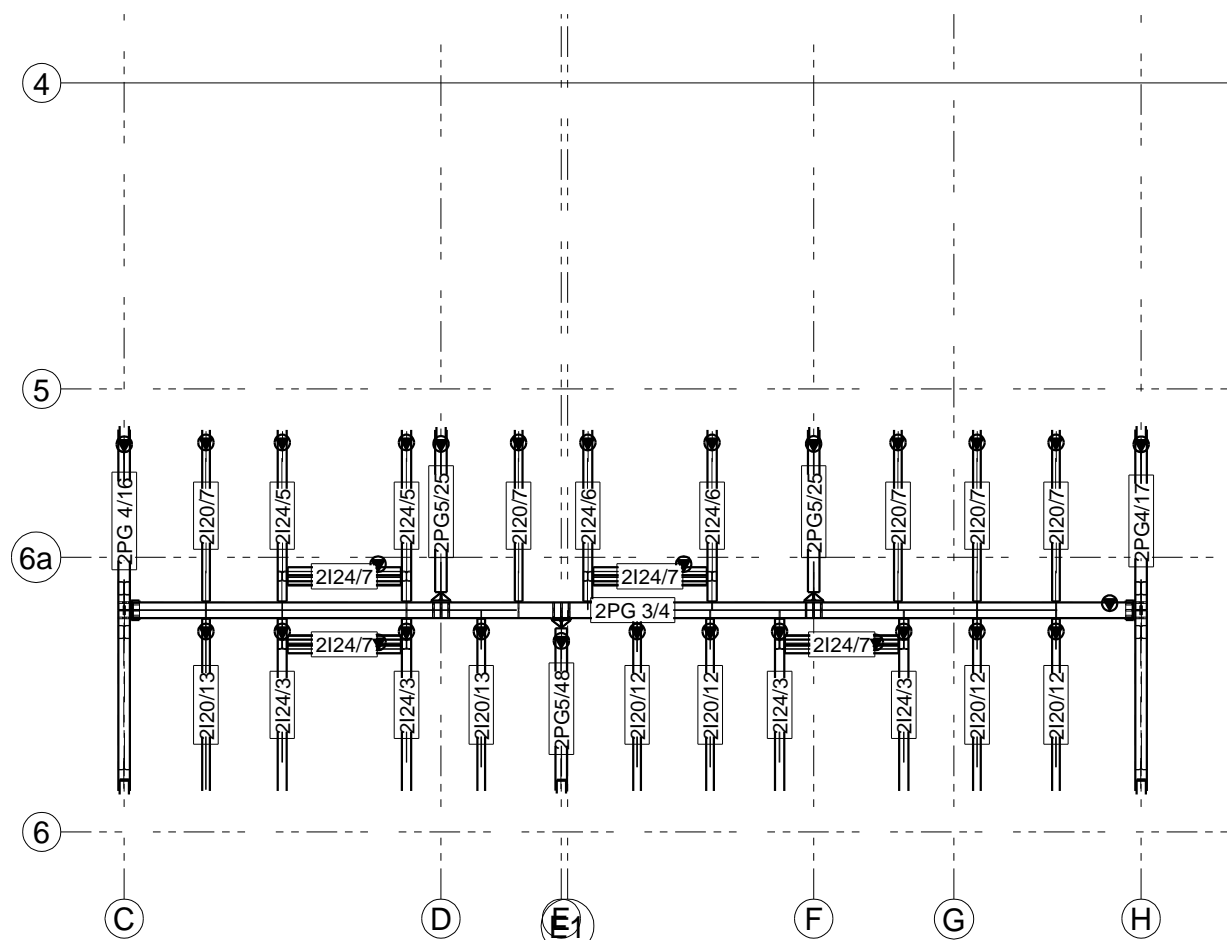
0	02	1395-02-30	Rad.Engineer	Rad.Engineer	Rad.Engineer
REV.	Phase Number:	Created date:	Modeled By:	Checked By:	Project Manager:
DESCRIPTION	PROJECT TITLE:		CONTRACTORE:		
SCALE:	N.T.S				
UNIT:	OWNER:		جناب آقای شجاعی		
FIELD:	CONSULTANT:		جناب آقای مهندس درخشنده		
PHASE:	DRAWING TITLE:		02 Plan +10.40		
Project No.:		- PH. 02	R. 0	2/2	



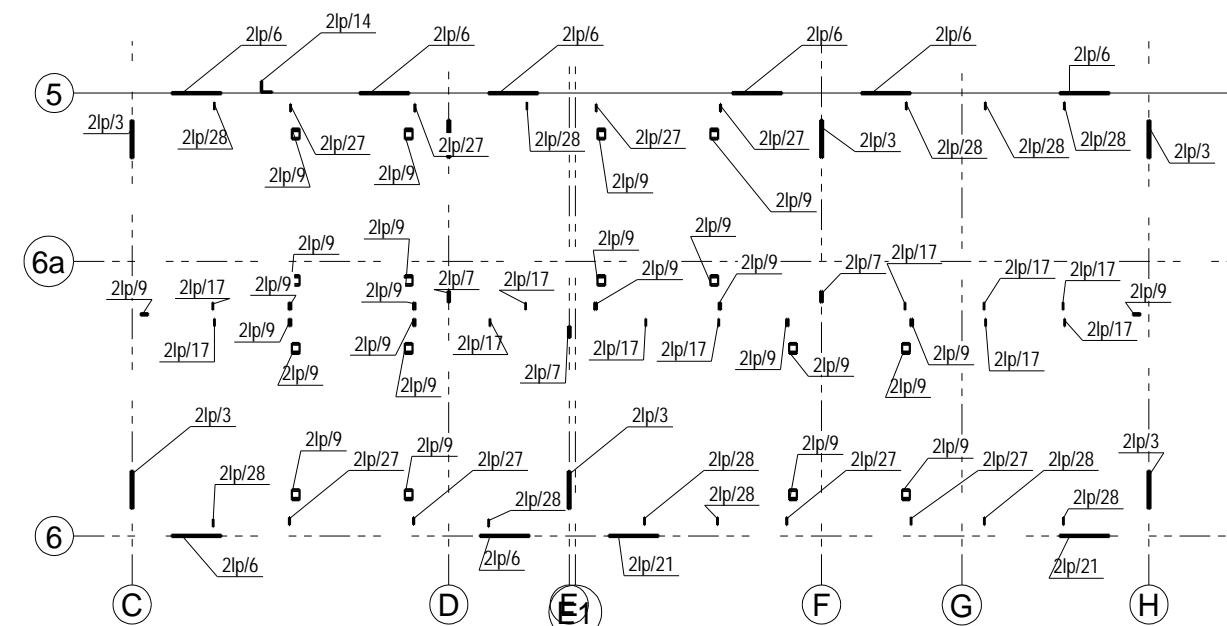
توجه: کدهای لوزپارتهای، کدهای سینگل پارت میباشد.



0	02	1395-02-30	Rad.Engineer	Rad.Engineer	Rad.Engineer
REV.	Phase Number:	Created date:	Modeled By:	Checked By:	Project Manager:
DESCRIPTION	PROJECT TITLE:		CONTRACTOR:		
SCALE:	N.T.S				
UNIT:	OWNER:		جناب آقای شجاعی		
FIELD:	CONSULTANT:		جناب آقای مهندس درخشنده		
PHASE :	DRAWING TITLE:		02 Plan +13.20&+14.00		
Project No.:		- PH. 02	R. 0	1/2	

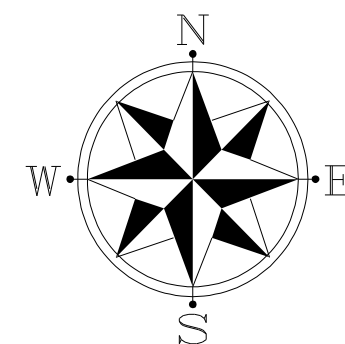


PLAN +14.00
1:100

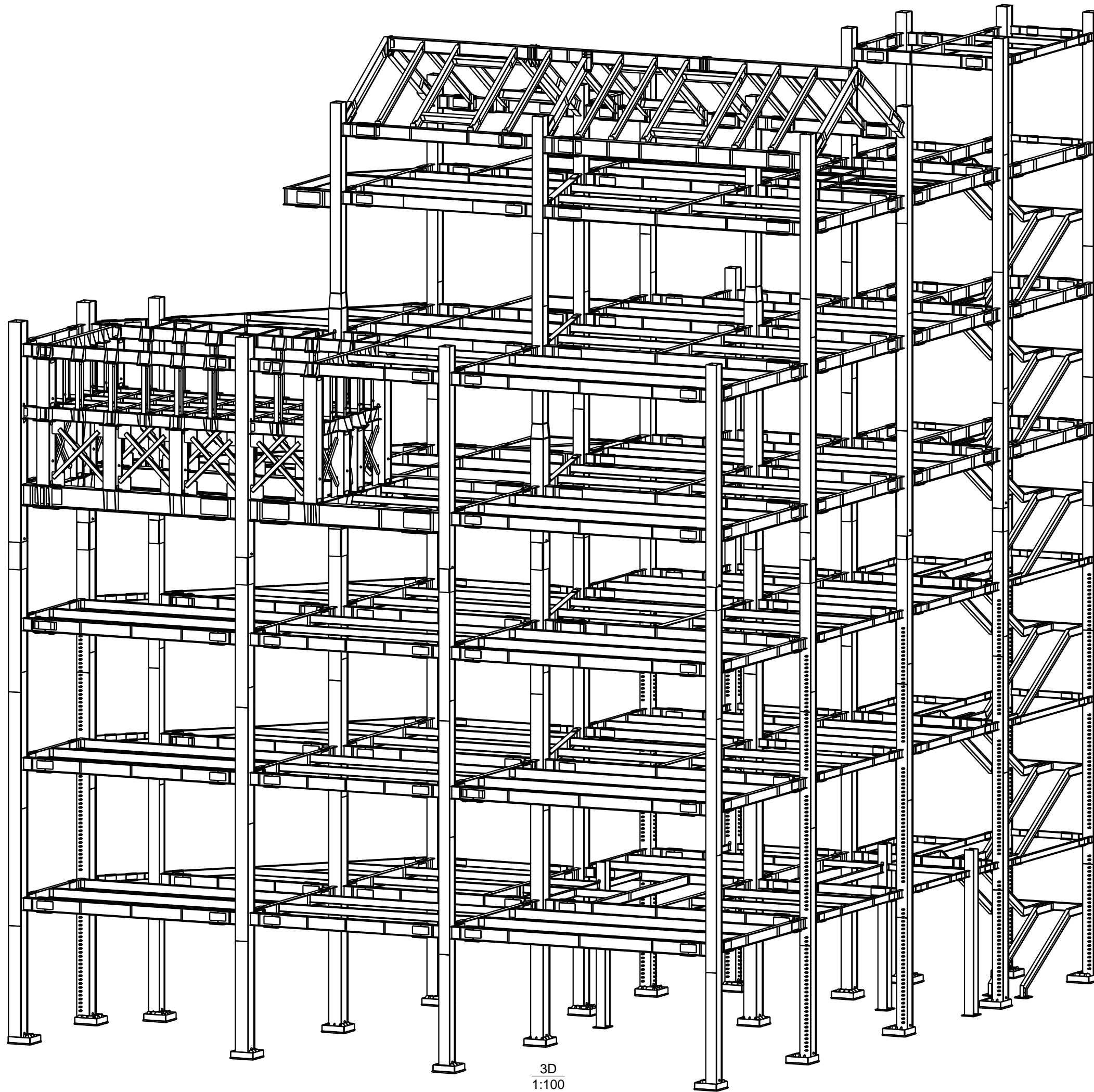


1:100

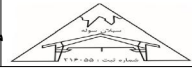
توجه: کدهای لوزپارتهای، کدهای سینگل پارت میباشد.



0	02	1395-02-30	Rad.Engineer	Rad.Engineer	Rad.Engineer
REV.	Phase Number:	Created date:	Modeled By:	Checked By:	Project Manager:
DESCRIPTION	PROJECT TITLE:		CONTRACTOR:		
SCALE:	N.T.S				
UNIT:	OWNER:		جناب آقای شجاعی		
FIELD:	CONSULTANT:		جناب آقای مهندس درخشنده		
PHASE:	DRAWING TITLE:		02 Plan +13.20&+14.00		
Project No.:		- PH. 02	R. 0	2/2	



3D
1:100

0	02	1395-02-30	Rad.Engineer	Rad.Engineer	Rad.Engineer
REV.	Phase Number:	Created date:	Modeled By:	Checked By:	Project Manager:
DESCRIPTION	PROJECT TITLE:			CONTRACTOR:	
SCALE:	مجمع مسکونی تجاری جناب آقای شجاعی				
UNIT:	OWNER:			جناب آقای شجاعی	
FIELD:	CONSULTANT:			جناب آقای مهندس درخشنده	
PHASE :	DRAWING TITLE:				
	02	3D			
Project No.:		- PH. 02	R. 0	1/1	