

BILL OF MATERIAL						
MATERIAL LIST FOR ONE ASSEMBLY						
Grid: 5/B		C1/1		No. Required: 1		
Mark	Grade	Size	No	Length	Weight PC	
East/1	ST37	PL1*50	1	50	0.0	
North/1	ST37	PL1*50	1	50	0.0	
bp/2	ST37	PL30*800	1	800	150.7	
c/1	ST37	PL30*400	2	4000	376.8	
c/2	ST37	PL30*400	4	3000	282.6	
c/3	ST37	PL30*400	2	4800	452.2	
c/12	ST37	PL20*400	2	3800	238.6	
c/13	ST37	PL20*400	2	3000	188.4	
ci/2	ST37	PL15*250	2	800	23.6	
ci/6	ST37	PL15*250	4	740	21.8	
ci/8	ST37	PL15*100	3	250	2.9	
ci/9	ST37	PL15*250	1	400	11.8	
ci/10	ST37	PL15*193	2	250	5.7	
ci/11	ST37	PL15*150	4	250	4.4	
ci/13	ST37	PL15*129	1	250	3.8	
ci/34	ST37	PL25*400	4	400	31.4	
DPG601/2	ASSEMBLY		1		154.6	
DPG602/2	ASSEMBLY		1		106.2	
DPG604/1	ASSEMBLY		6		89.5	
<b>TOTAL (kg)</b>					<b>4904.2</b>	

General Notes:						
-1 اتصال ستون به بیس پلایت یا جوش نفوذی صورت میگیرد.						
-2 علامت نصب درزوی تیرها که به صورت علامت مثلثی رنگ نشان داده شده، بعد از رنگ حکما بر روی تیرها علامت زده شود.						

Legend:						
ICI=Part 01-For Col-Intracacy	LP=Loose Part					
IBI=Beam And 01 Th Type At Part 01	ST=Stair					
Ibi=Part 01-For Beams-Intracacy	LP=Loose Part					
ICI=Collumns And 01 Th Type At Part 01						
Ii=Part 01-IPE Beam						

General Corner Welding Dimensions For Beams&Collumns						
Sections	C.W.D	Sections	C.W.D	Sections	C.W.D	Sections
General Notes:						
باقی اتصالات با بعد						
هفت دم ضخامت						
درز جوش اجرا گردد.						

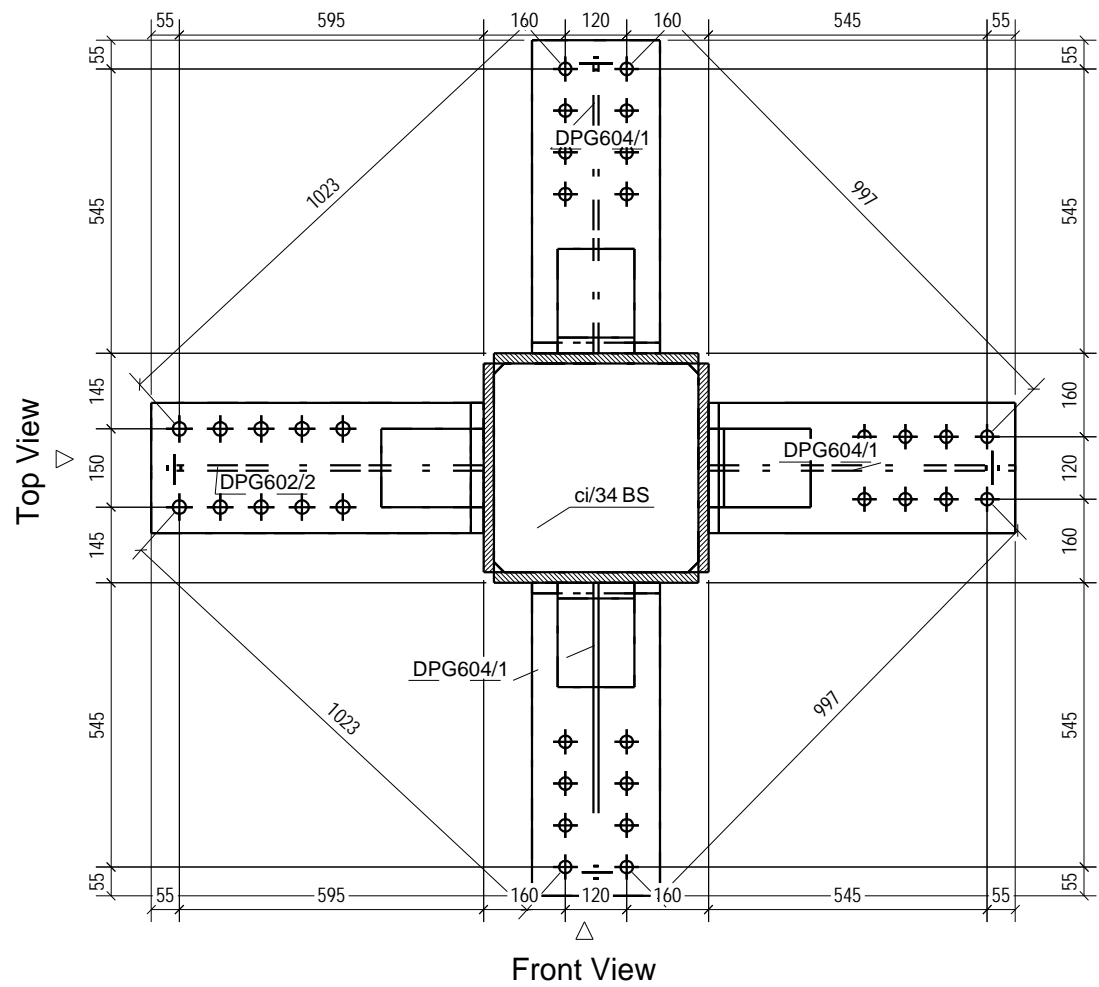
1	01	1395-05-02	Rad.Engineer	Rad.Engineer	Rad.Engineer
0	01	1395-04-15	Rad.Engineer	Rad.Engineer	Rad.Engineer
REV.	Phase Number:	Created date:	Modeled By:	Checked By:	Project Manager:

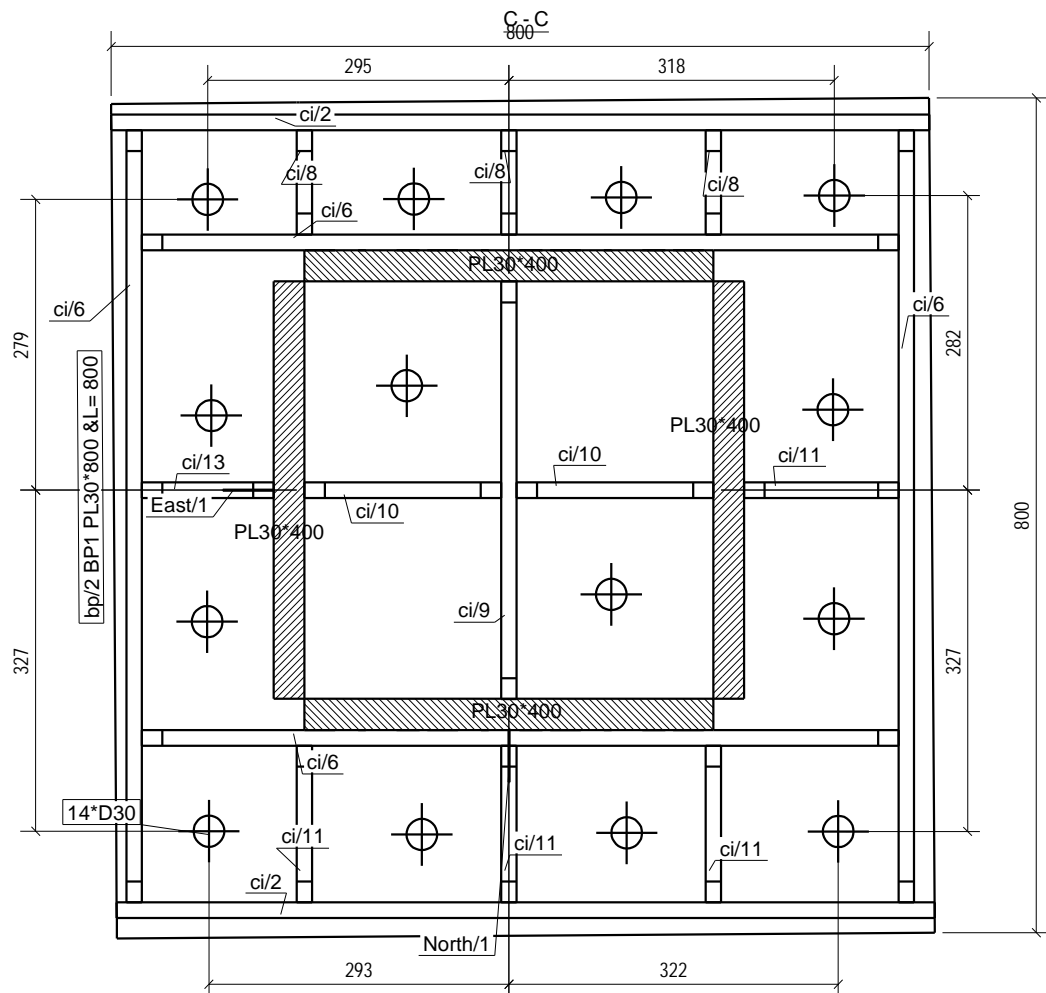
DESCRIPTION	PROJECT TITLE:	CONTRACTORE:
SCALE:	ویلاي مشاء دماوند	
UNIT:	OWNER:	جناب آقای مهندس رنجبر
FIELD:	CONSULTANT:	
PHASE:	DRAWING TITLE:	C1/1
01		

Project No.:	- PH. 01	R. 1	1/2
--------------	----------	------	-----



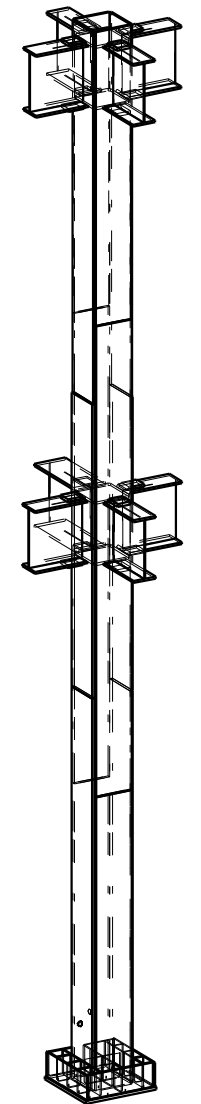
Front View



Top View

Front View

B - B



3D

**General Notes:**

- 1 اتصال ستون به بیس پلایت یا جوش نفوذی صورت میگیرد.
- 2 علائم نصب دربروی تیرها که به صورت علائم مثلثی رنگ نشان داده شده، بعد از رنگ حکما برروی تیرها علامت زده شود.

**Legend:**

Ici=Part 01-For Col-Intracacy	Iii=Part 01-For IPE Beams-Intracacy
lB1=Beam And 01 Th Type At Part 01	ST=Stair
lbi=Part 01-For Beams-Intracacy	LP=Loose Part
lCI=Collumns And 01 Th Type At Part 01	
li=Part 01-IPE Beam	

**General Corner Welding Dimensions For Beams&Collumns**

Sections	C.W.D	Sections	C.W.D	Sections	C.W.D	Sections	C.W.D	General Notes:		
CSI 20	CSI 15	PG41	6	PG48	6	PG59	6	PG97	8	جوش بانجی اتصالات با بعد هفت دهم ضخامت ورق نازکتر اجرا گردد.
CSI 20	CSI 15	PG43	6	PG54	6	PG610	6	PG98	8	
CSI 18	CSI 12	PG44	6	PG55	6	PG611	6	PG99	9	
CSI 18	CSI 10	PG45	6	PG56	6	PG594	8	PG910	12	
CSI 15	CSI 10	PG46	6	PG67	6	PG95	8	PG911	12	
CSI 12	CSI 10	PG47	6	PG68	6	PG96	8	PG911S	16	

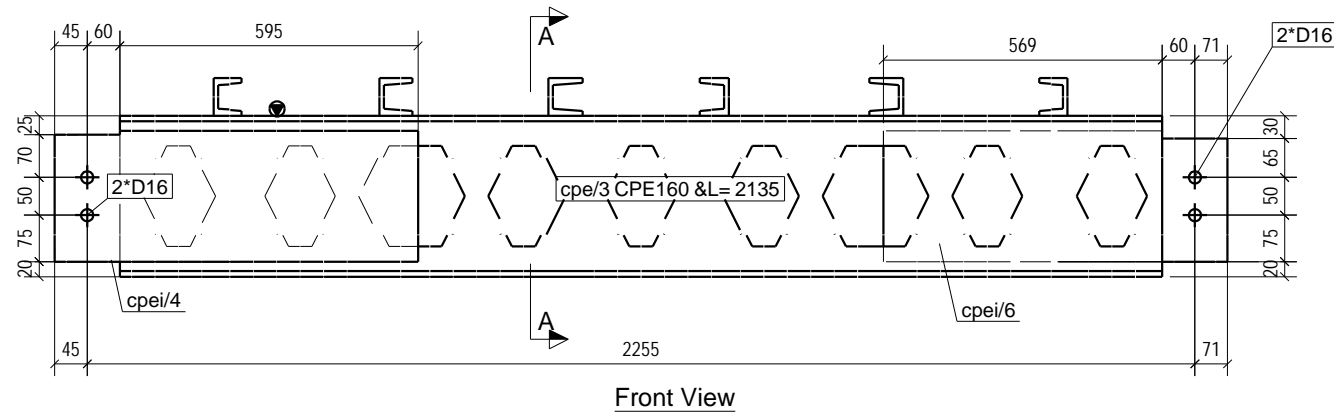
1	01	1395-05-02	Rad.Engineer	Rad.Engineer	Rad.Engineer
0	01	1395-04-15	Rad.Engineer	Rad.Engineer	Rad.Engineer
REV.	Phase Number:	Created date:	Modeled By:	Checked By:	Project Manager:

DESCRIPTION:	PROJECT TITLE:	CONTRACTORE:
SCALE:	N.T.S	ویلاي مشاء داموند
UNIT:	mm	جناب آقای مهندس رنجبر
FIELD:	Structure	CONSULTANT:
PHASE:	01	DRAWING TITLE:
		C1/1

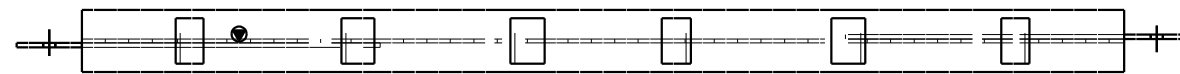
Project No.:	- PH. 01	R. 1	2/2
--------------	----------	------	-----

BILL OF MATERIAL

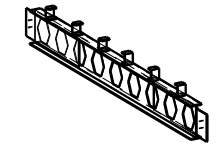
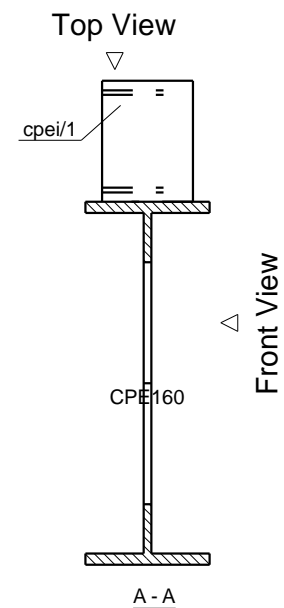
MATERIAL LIST FOR ONE ASSEMBLY			No. Required :		
<b>Grid: 6-6a/A</b>		<b>CPE160/2</b>		<b>1</b>	
Mark	Grade	Size	No	Length	Weight PC
cpe/3	ST37	CPE160	1	2135	33.7
cpei/1	ST37	UNP80	6	60	0.5
cpei/4	ST37	PL6*200	1	700	6.6
cpei/6	ST37	PL6*200	1	700	6.6
<b>TOTAL (kg)</b>					<b>50.0</b>



Front View



Top View



3D

GENERAL NOTES

- جهت شمال و جنوب درستونها، جهات جغرافیایی محل نصب میباشد.
- جهت نصب حتما و فقط در قسمت بالای تیر علامت زده شود.
- جوش ستونها یا پدستالها به بیس پلیت نفوذی است.

Legend:

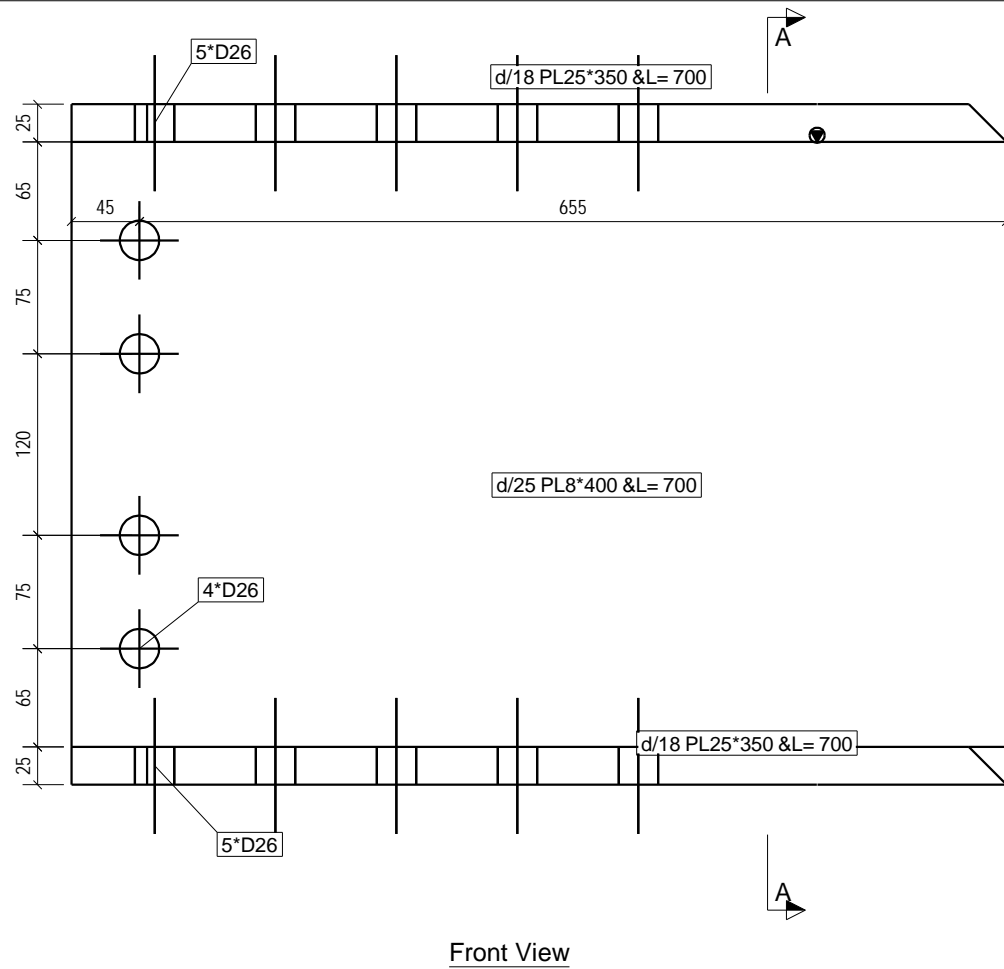
lci=Part 01-For Col-Intracacy	lii=Part 01-For IPE Beams-Intracacy
lbi=Beam And 01 Th Type At Part 01	ST=Stair
lci=Collumns And 01 Th Type At Part 01	LP=Loose Part
li=Part 01-IPE Beam	

General Corner Welding Dimensions For Beams&Collumns

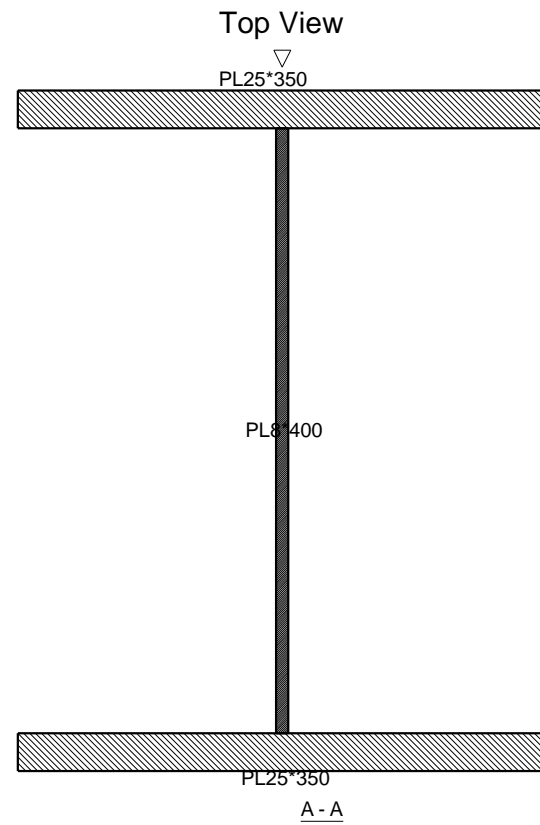
Section	C.W.D	Section	C.W.D	Section	C.W.D	Section	C.W.D	Section	C.W.D	General Notes:	
CS1	20	CS6	15	PG41	6	PG48	6	PG59	6	PG97	8
CS1a	20	CS7	15	PG43	6	PG54	6	PG610	6	PG98	8
CS2	18	CS8	12	PG44	6	PG55	6	PG611	6	PG99	9
CS3	18	CS9	10	PG45	6	PG56	6	PG94	8	PG10	12
CS4	15	CS10	10	PG46	6	PG57	6	PG95	8	PG11	12
CS5	12	CS11	10	PG47	6	PG58	6	PG96	8	PG118	16

0	01	1395-04-15	Rad.Engineer	Rad.Engineer	Rad.Engineer
REV.	Phase Number:	Created date:	Modeled By:	Checked By:	Project Manager:

DESCRIPTION	PROJECT TITLE:	CONTRACTOR:
SCALE:	مسجد فرهنگی مذهبی حسینه ابن علی منطقه 22	
N.T.S	OWNER:	شهرداری منطقه 22
UNIT:	CONSULTANT:	
mm	DRAWING TITLE:	
FIELD:	01	CPE160/2
Structure	Project No.:	- PH. 01 R. 0 1/1

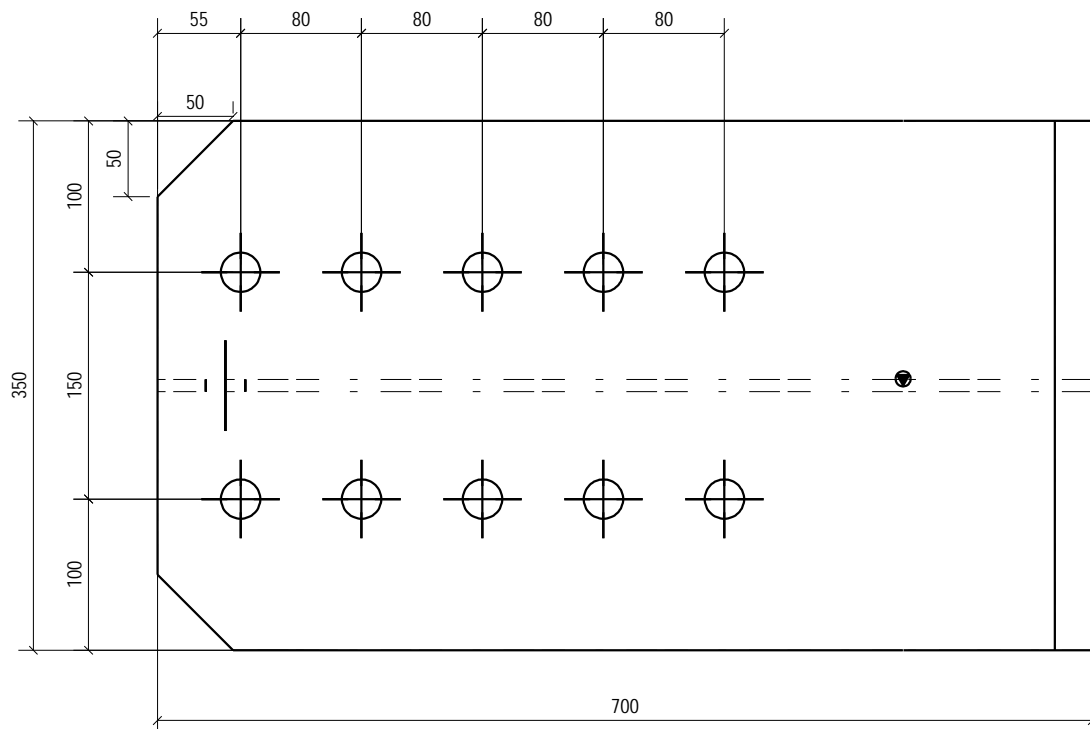


Front View



Front View

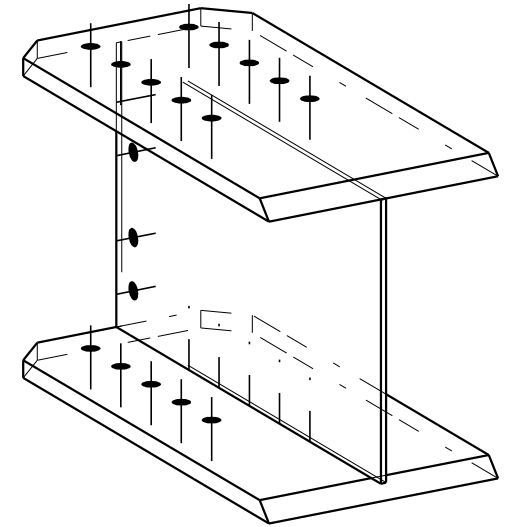
A - A



Top View

BILL OF MATERIAL

MATERIAL LIST FOR ONE ASSEMBLY			No. Required :		
Grid: <b>4a/F1-F</b>			<b>DPG402/3</b>		
			<b>2</b>		
Mark	Grade	Size	No	Length	Weight PC
d/18	ST37	PL25*350	2	700	48.1
d/25	ST37	PL8*400	1	700	17.6
<b>TOTAL (kg)</b>					<b>113.7</b>



3D

GENERAL NOTES

- 1- جهات شمال و جنوب درستونها، جهات جغرافیایی محل نصب میباشد.
- 2- جهت نصب حتما و فقط در قسمت بالای تیر علامت زده شود.
- 3- جوش ستونها یا پدستالها به بیس پلیت نفوذی است.

Legend:

lci=Part 01-For Col-Intracacy	lii=Part 01-For IPE Beams-Intracacy
lB1=Beam And 01 Th Type At Part 01	ST=Stair
lbi=Part 01- For Beams-Intracacy	LP=Loose Part
lC1=Collumns And 01 Th Type At Part 01	
li=Part 01-IPE Beam	

General Corner Welding Dimensions For Beams&Collumns

Section	C.W.D/Section	C.W.D/Section	C.W.D/Section	C.W.D/Section	C.W.D/Section	C.W.D/Section	General Notes:					
CS1	20	CS6	15	PG41	6	PG48	6	PG69	6	PG97	8	
CS1a	20	CS7	15	PG43	6	PG54	6	PG610	6	PG98	8	جوش باقی اتصالات با بدنه
CS2	18	CS8	12	PG44	6	PG55	6	PG611	6	PG99	9	فلت دهم ضخامت
CS3	18	CS9	10	PG45	6	PG56	6	PG94	8	PG10	12	ورق نازکتر اجرا گردد.
CS4	15	CS10	10	PG46	6	PG57	6	PG95	8	PG11	12	
CS5	12	CS11	10	PG47	6	PG58	6	PG96	8	PG118	16	

0	01	1395-04-15	Rad.Engineer	Rad.Engineer	Rad.Engineer
---	----	------------	--------------	--------------	--------------

REV.	Phase Number:	Created date:	Modeled By:	Checked By:	Project Manager:
------	---------------	---------------	-------------	-------------	------------------

DESCRIPTION	PROJECT TITLE:	CONTRACTOR:
-------------	----------------	-------------

SCALE:	مسجد فرهنگی مذهبی حسینیه ابن علی منطقه 22	
	N.T.S	

UNIT:	OWNER:	شهرداری منطقه 22
-------	--------	------------------

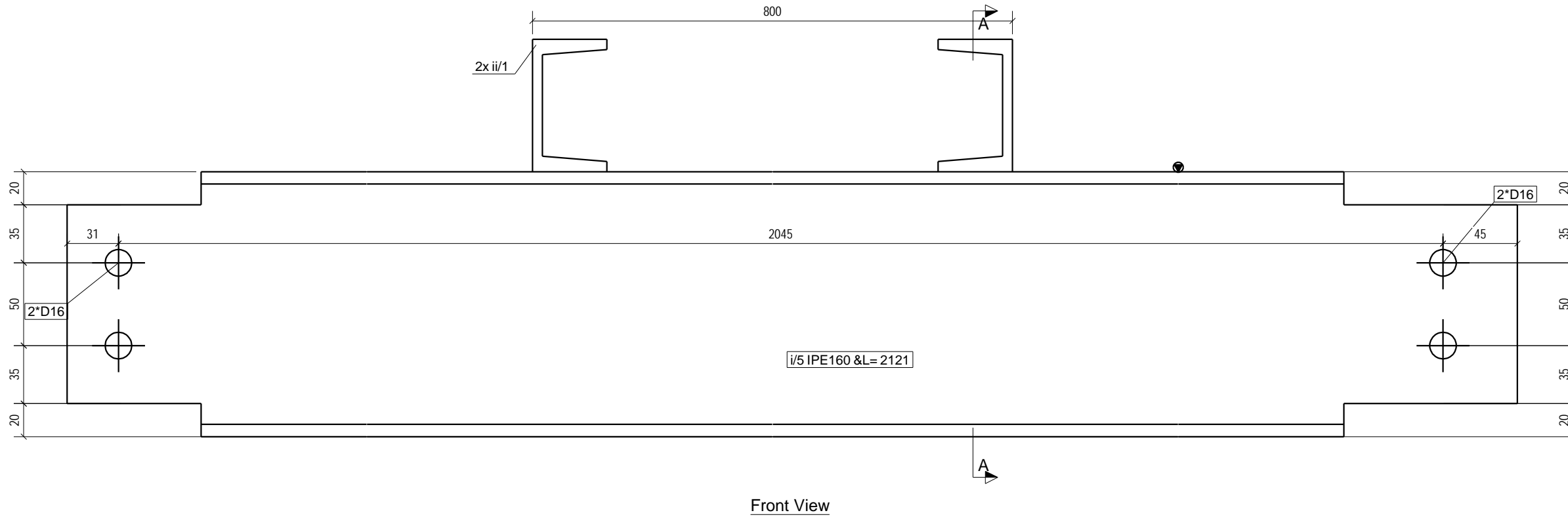
FIELD:	CONSULTANT:	
--------	-------------	--

PHASE:	DRAWING TITLE:	DPG402/3
--------	----------------	----------

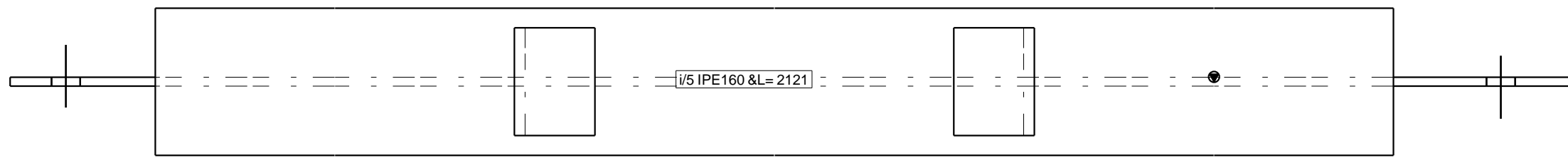
Project No.:	PH. 01	R. 0	1/1
--------------	--------	------	-----

BILL OF MATERIAL

MATERIAL LIST FOR ONE ASSEMBLY					No. Required :
Grid: 6a>/E-D			116/5	1	
Mark	Grade	Size	No	Length	Weight PC
i/5	ST37	IPE160	1	2121	33.4
ii/1	ST37	UNP80	2	60	0.5
<b>TOTAL (kg)</b>					<b>34.5</b>

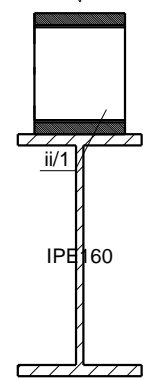


Front View



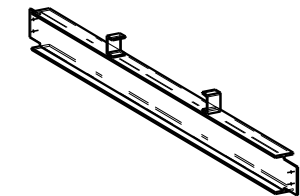
Top View

Top View



Front View

A - A



3D

GENERAL NOTES

- 1- جهات شمال و جنوب درستونها، جهات جغرافیایی محل نصب میباشد.
- 2- جهت نصب حتما و فقط در قسمت بالای تیر علامت زده شود.
- 3- جوش ستونها یا پدستالها به بیس پلیت نفوذی است.

Legend:

lci=Part 01-For Col-Intracacy	lii=Part 01-For IPE Beams-Intracacy
lB1=Beam And 01 Th Type At Part 01	ST=Stair
lbi=Part 01-For Beams-Intracacy	LP=Loose Part
lC1=Collumns And 01 Th Type At Part 01	
li=Part 01-IPE Beam	

General Corner Welding Dimensions For Beams&Collumns

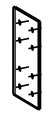
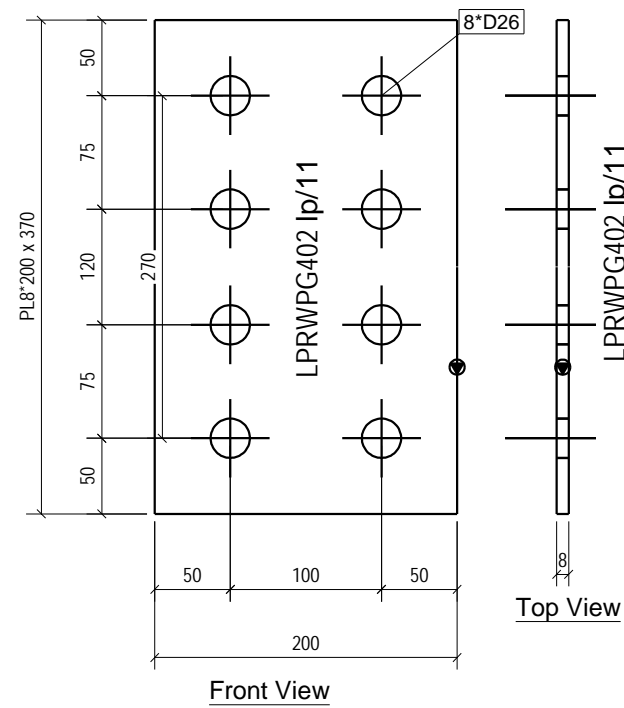
Section	C.W.D	Section	C.W.D	Section	C.W.D	Section	C.W.D	Section	C.W.D	General Notes:	
CS1	20	CS6	15	PG41	6	PG48	6	PG59	6	PG97	8
CS1a	20	CS7	15	PG43	6	PG54	6	PG610	6	PG98	8
CS2	18	CS8	12	PG44	6	PG55	6	PG611	6	PG99	9
CS3	18	CS9	10	PG45	6	PG56	6	PG94	8	PG10	12
CS4	15	CS10	10	PG46	6	PG57	6	PG95	8	PG11	12
CS5	12	CS11	10	PG47	6	PG58	6	PG96	8	PG118	16

0	01	1395-04-15	Rad.Engineer	Rad.Engineer	Rad.Engineer
REV.	Phase Number:	Created date:	Modeled By:	Checked By:	Project Manager:

DESCRIPTION	PROJECT TITLE:	CONTRACTOR:
SCALE:	مسجد فرهنگي مذهبي حسينه ابن علي منطقه 22	
N.T.S		
UNIT:	OWNER:	شهرداری منطقه 22
mm		
FIELD:	CONSULTANT:	
Structure		
PHASE:	DRAWING TITLE:	
01	116/5	
Project No.:	- PH. 01	R. 0
		1/1

BILL OF MATERIAL

MATERIAL LIST FOR ONE ASSEMBLY					No. Required :
Grid: <b>6/A</b>		LP/11		<b>20</b>	
Mark	Grade	Size	No	Length	Weight PC
lp/11	ST37	PL8*200	1	370	4.6
<b>TOTAL (kg)</b>					<b>4.6</b>



3D

GENERAL NOTES

- 1- جهات شمال و جنوب درستونها، جهات جغرافیایی محل نصب میباشد.
- 2- جهت نصب حتما و فقط در قسمت بالای تیر علامت زده شود.
- 3- جوش ستونکها یا پدستالها به بیس پلیت نفوذی است.

Legend:

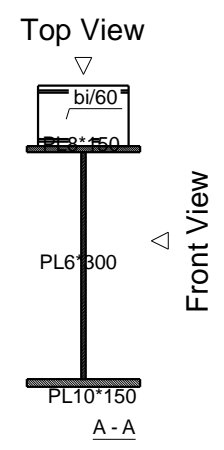
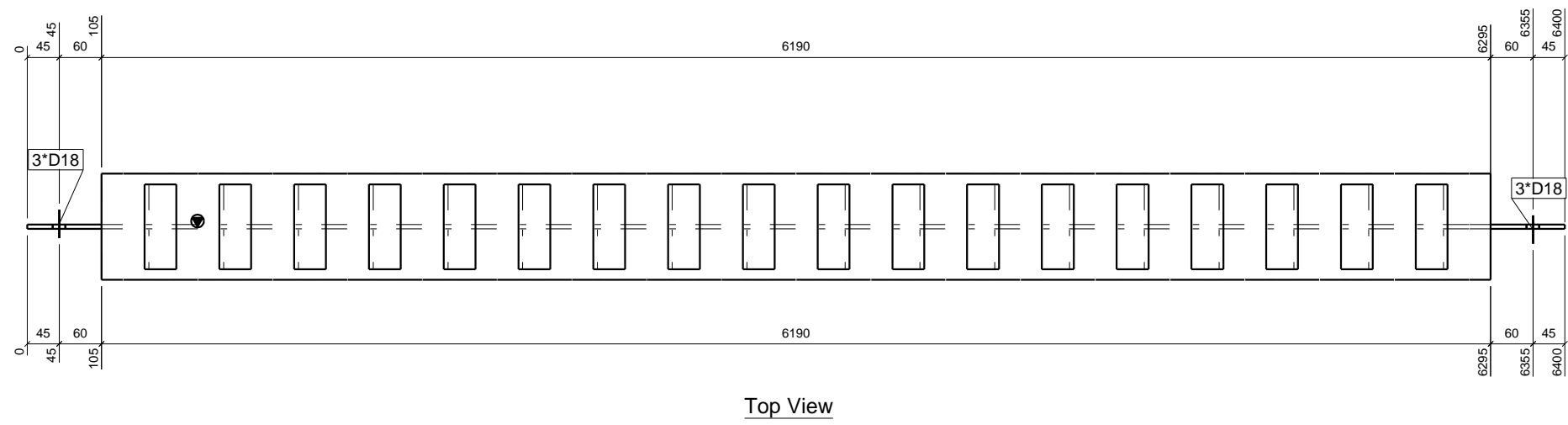
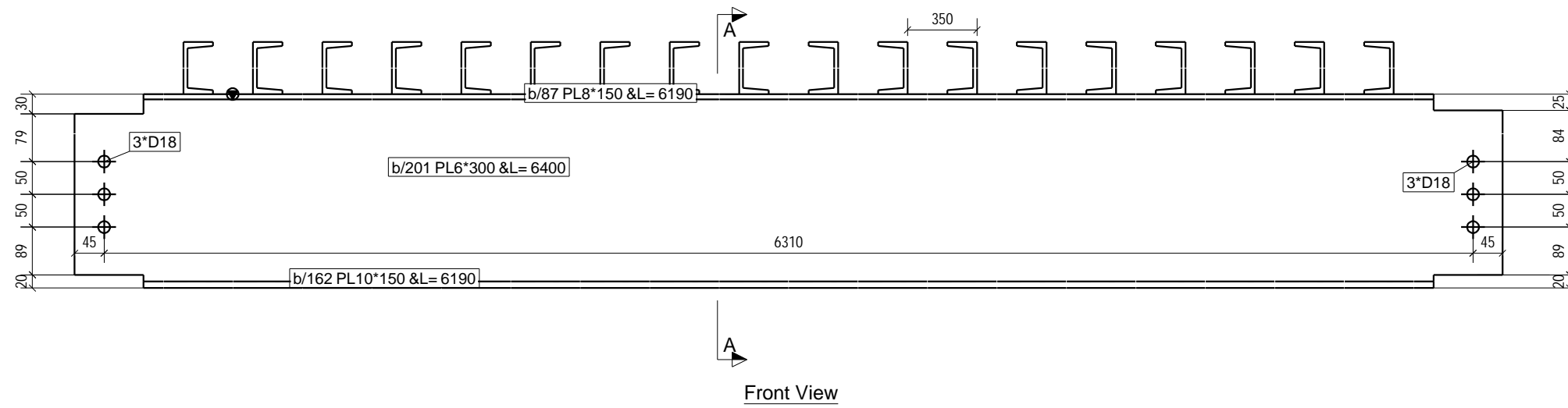
lci=Part 01-For Col-Intracacy	lii=Part 01-For IPE Beams-Intracacy
lB1=Beam And 01 Th Type At Part 01	ST=Stair
lbi=Part 01-For Beams-Intracacy	LP=Loose Part
lC1=Collumns And 01 Th Type At Part 01	
li=Part 01-IPE Beam	

General Corner Welding Dimensions For Beams&Collumns

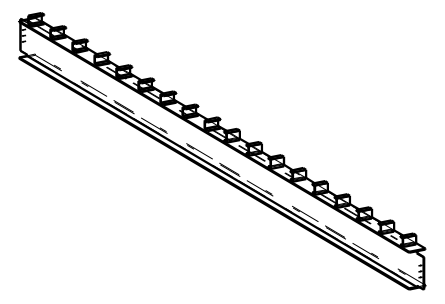
Section	C.W.D	Section	C.W.D	Section	C.W.D	Section	C.W.D	Section	C.W.D	General Notes:		
CS1	20	CS6	15	PG41	6	PG48	6	PG59	6	PG97	8	
CS1a	20	CS7	15	PG43	6	PG54	6	PG610	6	PG28	8	جوش باقی انصالات با بعد
CS2	18	CS8	12	PG44	6	PG55	6	PG611	6	PG99	9	لفت دهم ضخامت
CS3	18	CS9	10	PG45	6	PG56	6	PG94	8	PG10	12	ورق نازکتر اجرا گردد.
CS4	15	CS10	10	PG46	6	PG57	6	PG95	8	PG11	12	
CS5	12	CS11	10	PG47	6	PG58	6	PG96	8	PG118	16	

0	01	1395-04-15	Rad.Engineer	Rad.Engineer	Rad.Engineer
REV.	Phase Number:	Created date:	Modeled By:	Checked By:	Project Manager:

DESCRIPTION	PROJECT TITLE:	CONTRACTORE:
SCALE:	مسجد فرهنگی مذهبی حسینیه ابن علی منطقه 22	
N.T.S		
UNIT:	OWNER:	شهرداری منطقه 22
mm		
FIELD:	CONSULTANT:	
Structure		
PHASE :	DRAWING TITLE:	
01	LP/11	
Project No.:	- PH. 01	R. 0
		1/1



BILL OF MATERIAL					
MATERIAL LIST FOR ONE ASSEMBLY					No. Required :
Grid: 1a-2/F1-F			PG38/3	4	
Mark	Grade	Size	No	Length	Weight PC
b/87	ST37	PL8*150	1	6190	58.3
b/162	ST37	PL10*150	1	6190	72.9
b/201	ST37	PL6*300	1	6400	90.4
bi/60	ST37	UNP80	18	120	1.0
<b>TOTAL (kg)</b>					<b>240.3</b>



3D

**GENERAL NOTES**

- 1- جهات شمال و جنوب درستونها، جهات جغرافیایی محل نصب میباشد.
- 2- جهت نصب حتما و فقط در قسمت بالای تیر علامت زده شود.
- 3- جوش ستونها یا پدستالها به بیس پلیت نفوذی است.

**Legend:**

lci=Part 01-For Col-Intricity	lii=Part 01-For IPE Beams-Intricity
lbi=Beam And 01 Th Type At Part 01	ST=Stair
lci=Collumns And 01 Th Type At Part 01	LP=Loose Part
li=Part 01-IPE Beam	

**General Corner Welding Dimensions For Beams&Collumns**

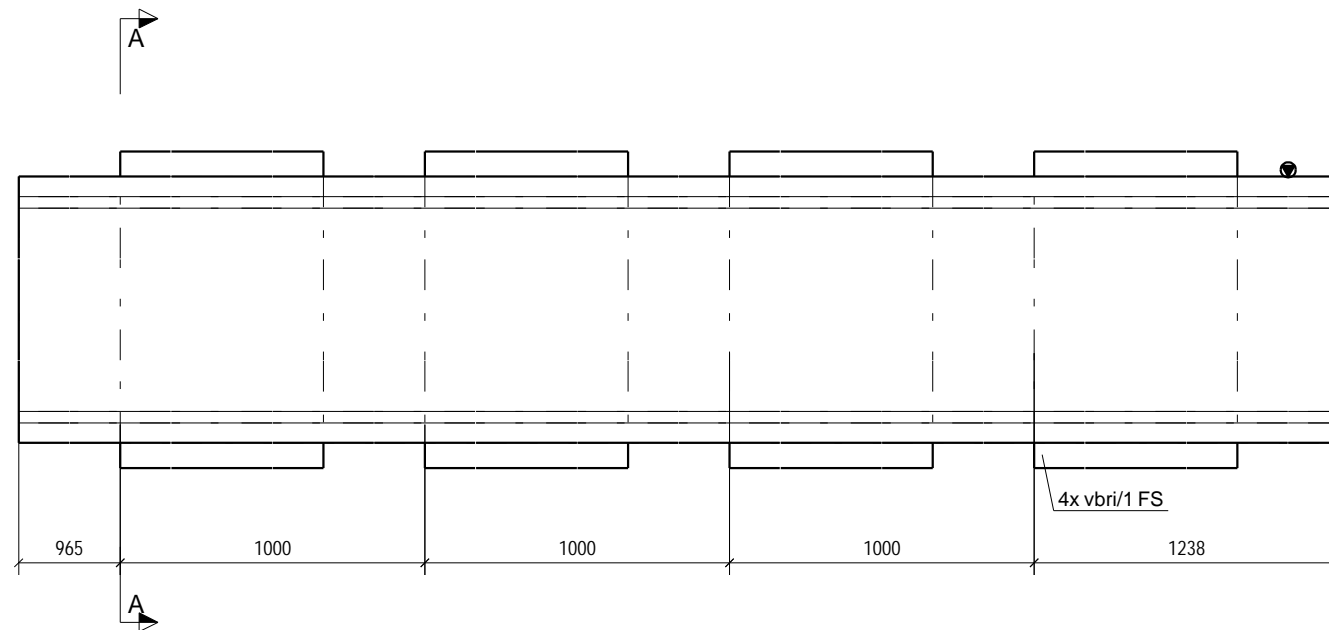
Section	C.W.D	Section	C.W.D	Section	C.W.D	Section	C.W.D	Section	C.W.D	General Notes:		
CS1	20	CS6	15	PG41	6	PG48	6	PG59	6	PG97	8	
CS1a	20	CS7	15	PG43	6	PG54	6	PG610	6	PG98	8	جوش باقی اتصالات با بعد
CS2	18	CS8	12	PG44	6	PG55	6	PG611	6	PG99	9	هفت دهم ضخامت
CS3	18	CS9	10	PG45	6	PG56	6	PG94	8	PG10	12	ورق نازکتر اجرا گردد.
CS4	15	CS10	10	PG46	6	PG57	6	PG95	8	PG11	12	
CS5	12	CS11	10	PG47	6	PG58	6	PG96	8	PG118	16	

0	01	1395-04-15	Rad.Engineer	Rad.Engineer	Rad.Engineer
REV.	Phase Number:	Created date:	Modeled By:	Checked By:	Project Manager:

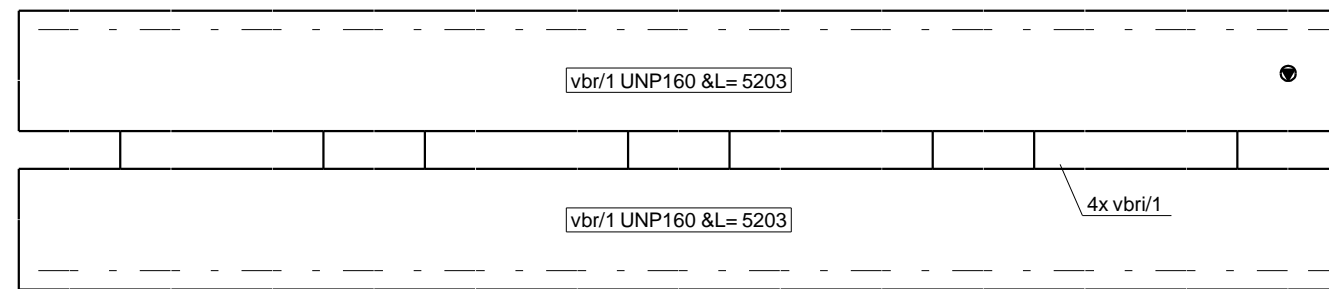
DESCRIPTION	PROJECT TITLE:	CONTRACTOR:
SCALE:	مسجد فرهنگی مذهبی حسینه ابن علی منطقه 22	
N.T.S		
UNIT:	OWNER:	شهرداری منطقه 22
mm		
FIELD:	CONSULTANT:	
Structure		
PHASE:	DRAWING TITLE:	
01	PG38/3	
Project No.:	PH. 01	R. 0
		1/1

BILL OF MATERIAL

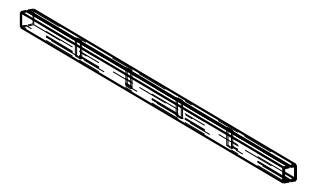
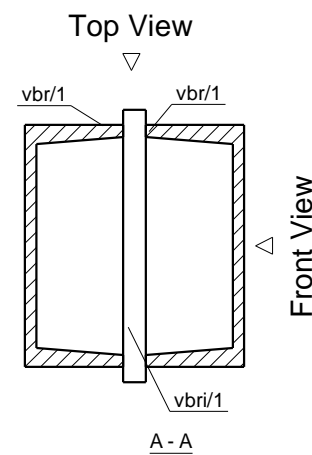
MATERIAL LIST FOR ONE ASSEMBLY			No. Required :		
<b>Grid: 1a/H-F</b>		<b>VBR/1</b>		<b>1</b>	
Mark	Grade	Size	No	Length	Weight PC
vbr/1	ST37	UNP160	2	5203	98.0
vbr/1	ST37	PL15*100	4	180	2.1
<b>TOTAL (kg)</b>					<b>204.5</b>



Front View



Top View



3D

GENERAL NOTES

- 1- جهات شمال و جنوب درستونها، جهات جغرافیایی محل نصب میباشد.
- 2- جهت نصب حتما و فقط در قسمت بالای تیر علامت زده شود.
- 3- جوش ستونها یا پدستالها به بیس پلیت نفوذی است.

Legend:

lci=Part 01-For Col-Intracacy	lii=Part 01-For IPE Beams-Intracacy
lbi=Beam And 01 Th Type At Part 01	ST=Stair
lci=Collumns And 01 Th Type At Part 01	LP=Loose Part
li=Part 01-IPE Beam	

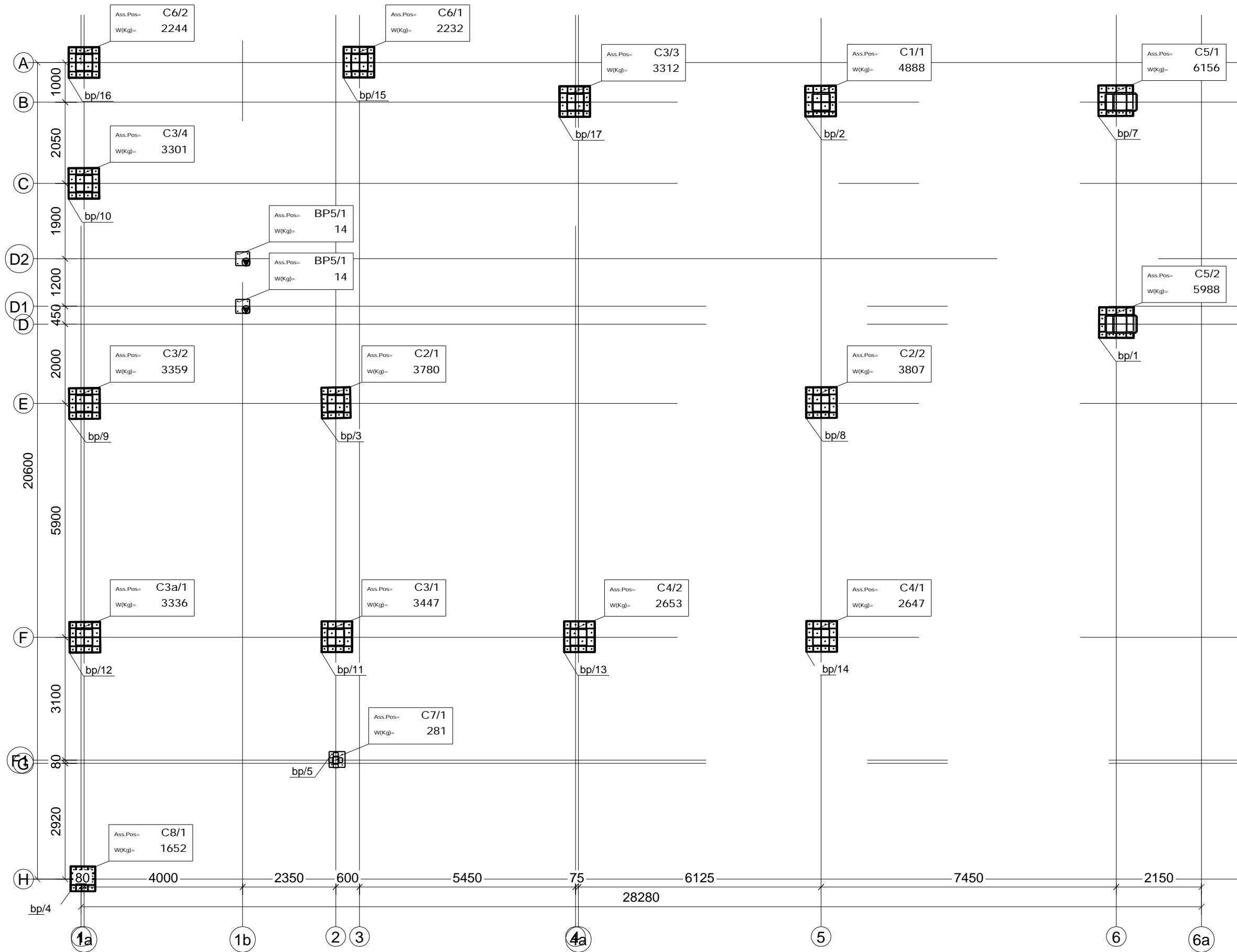
General Corner Welding Dimensions For Beams&Collumns

Section	C.W.D	Section	C.W.D	Section	C.W.D	Section	C.W.D	Section	C.W.D	General Notes:		
CS1	20	CS6	15	PG41	6	PG48	6	PG69	6	PG97	8	
CS1a	20	CS7	15	PG43	6	PG54	6	PG610	6	PG28	8	جوش باقی اتصالات با بدنه
CS2	18	CS8	12	PG44	6	PG55	6	PG611	6	PG99	9	فلت دهم ضخامت
CS3	18	CS9	10	PG45	6	PG56	6	PG94	8	PG10	12	ورق نازکتر اجرا گردد.
CS4	15	CS10	10	PG46	6	PG57	6	PG95	8	PG11	12	
CS5	12	CS11	10	PG47	6	PG58	6	PG96	8	PG118	16	

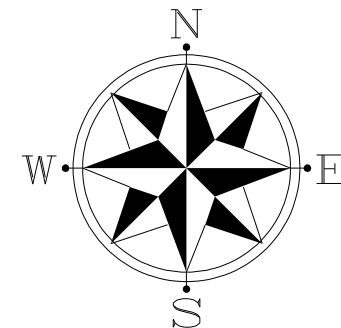
0	01	1395-04-15	Rad.Engineer	Rad.Engineer	Rad.Engineer
REV.	Phase Number:	Created date:	Modeled By:	Checked By:	Project Manager:

DESCRIPTION	PROJECT TITLE:	CONTRACTOR:
SCALE:	مسجد فرهنگي مذهبي حسينه ابن علي منطقه 22	
N.T.S		
UNIT:	OWNER:	شهرداري منطقه 22
mm		
FIELD:	CONSULTANT:	
Structure		
PHASE:	DRAWING TITLE:	
01	VBR/1	
Project No.:	PH. 01	R. 0
		1/1

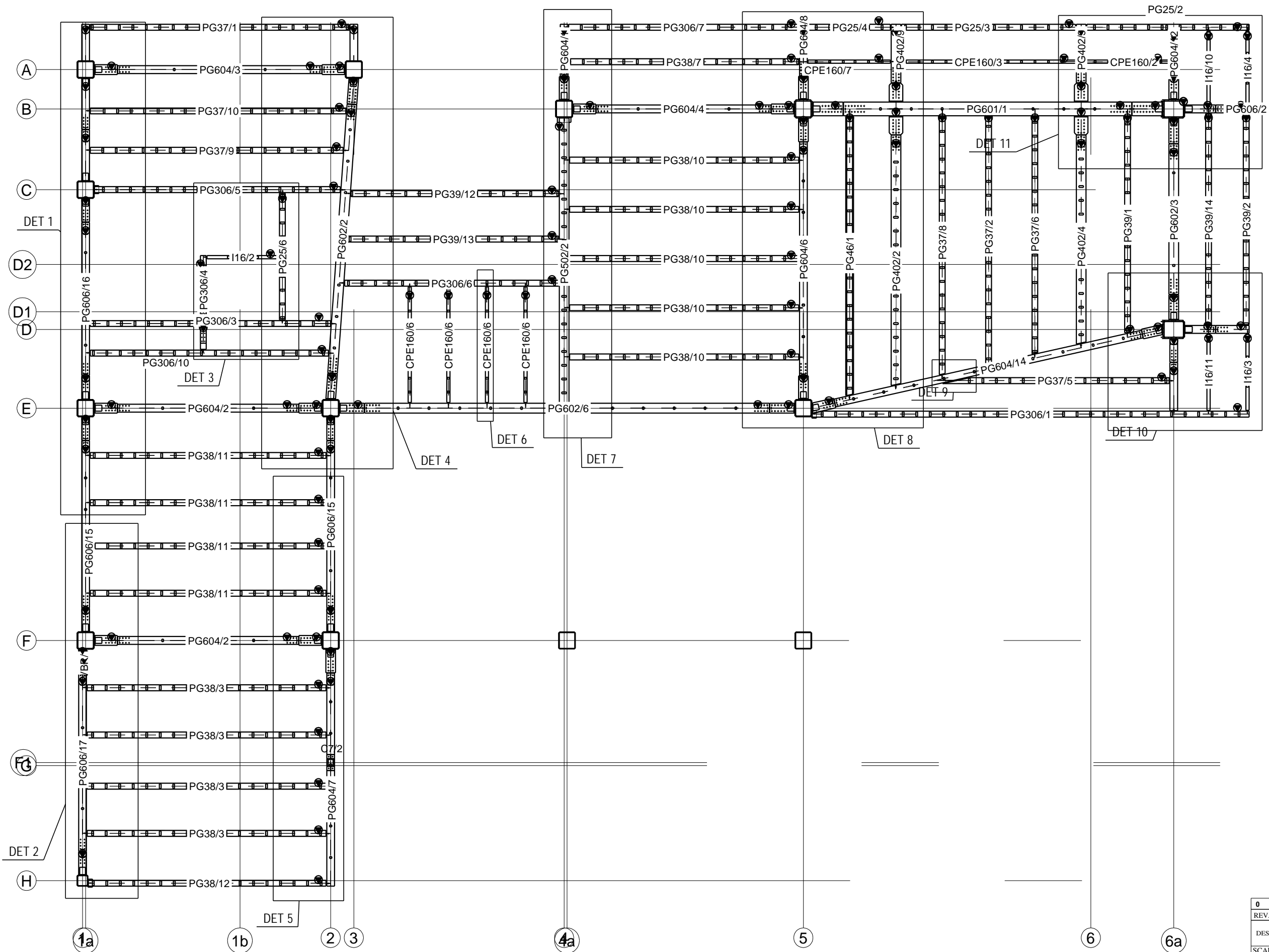




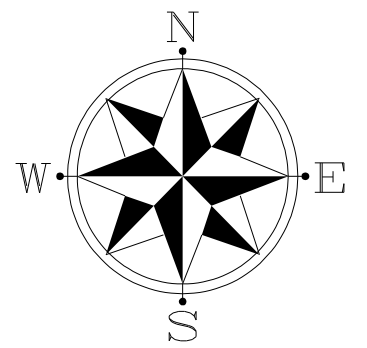
PLAN -0.65  
1:100



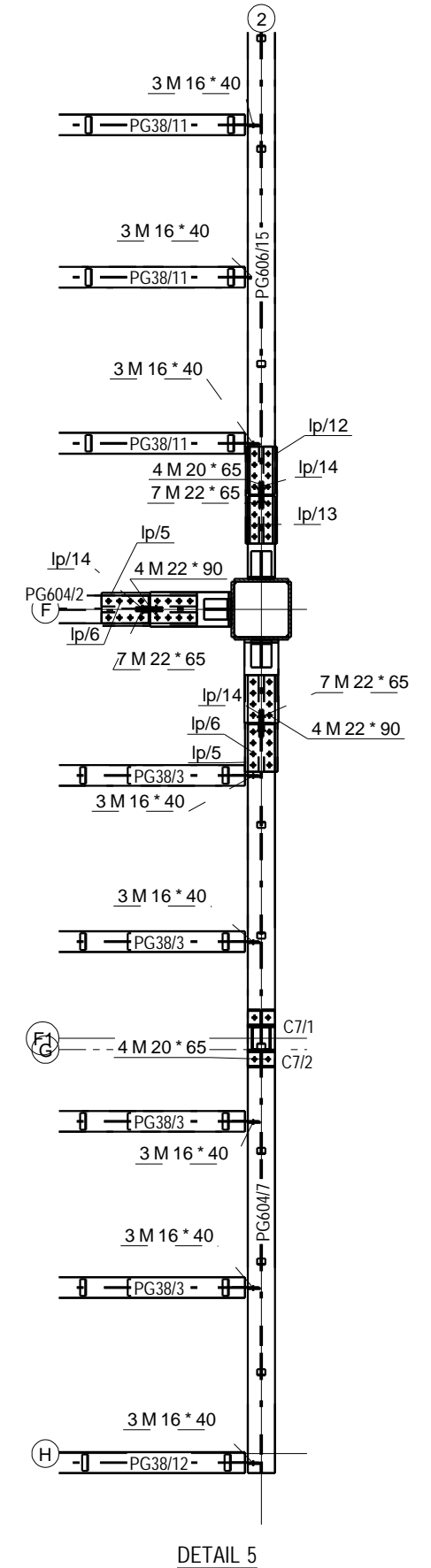
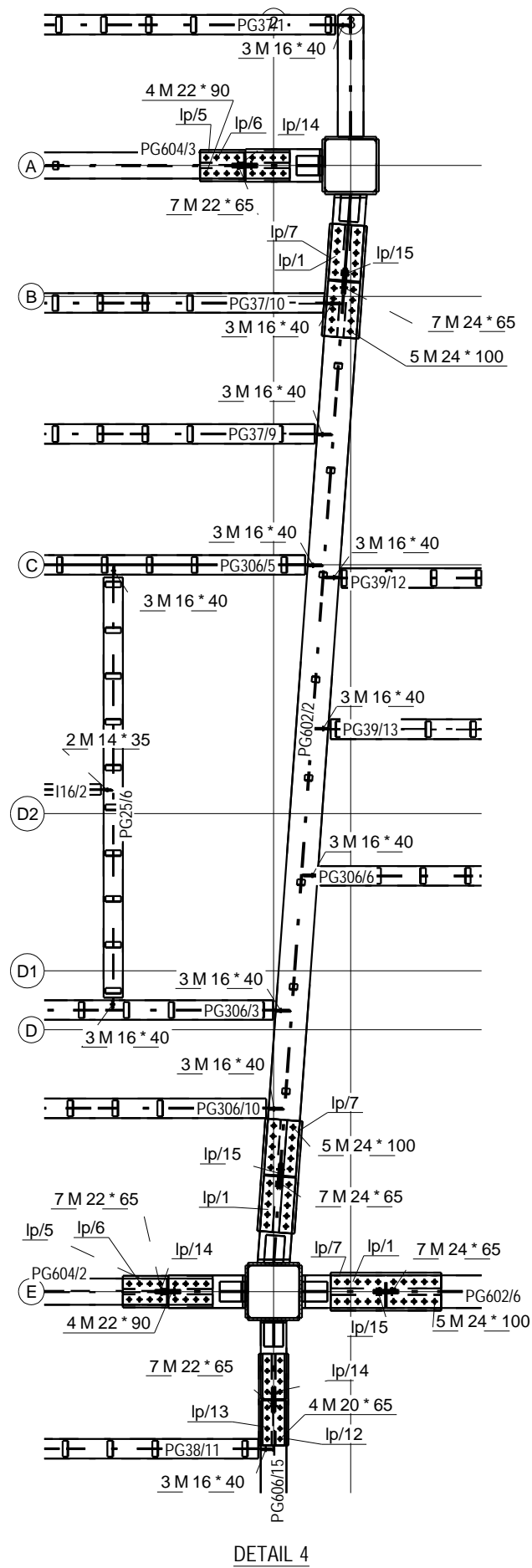
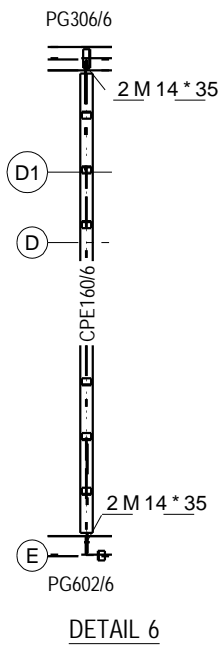
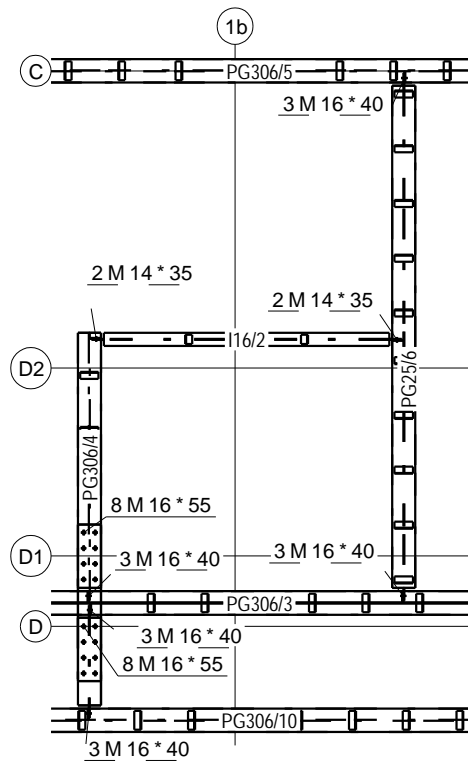
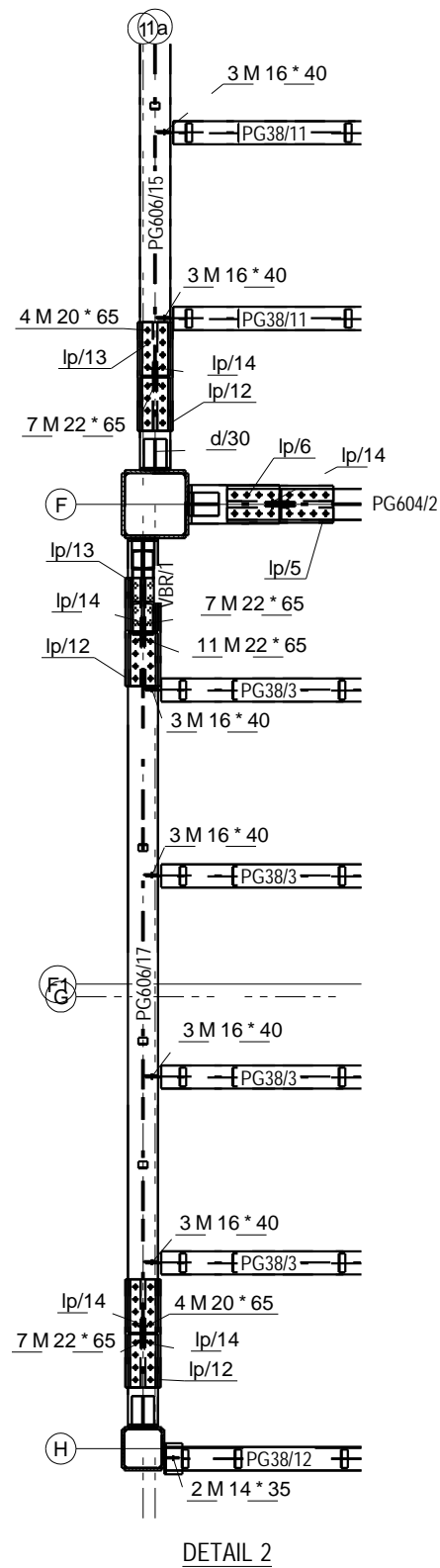
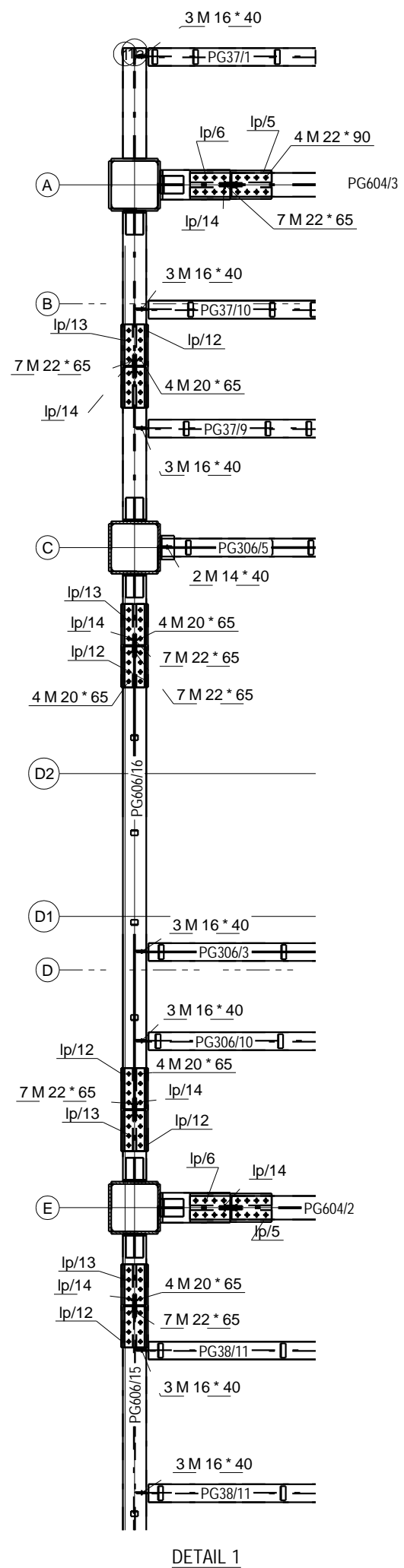
REV.	0	01	1395-04-15	Rad.Engineer	Rad.Engineer	Rad.Engineer
DESCRIPTION	PROJECT TITLE:			CONTRACTOR:		
SCALE:	N.T.S					
UNIT:	mm			OWNER: جناب آقای مهندس رنجبر		
FIELD:	Structure			CONSULTANT:		
PHASE :	01			DRAWING TITLE: Collumns'S Key Plan		
Project No.:	- PH. 01		R. 0	1/1		



PLAN +5.35  
1:100



0	01	1395-04-15	Rad.Engineer	Rad.Engineer	Rad.Engineer
REV.	Phase Number:	Created date:	Modeled By:	Checked By:	Project Manager:
DESCRIPTION	PROJECT TITLE:		CONTRACTORE:		
SCALE:	N.T.S				
UNIT:	OWNER:		جناب آقای مهندس رنجبر		
FIELD:	STRUCTURE		CONSULTANT:		
PHASE :	DRAWING TITLE:		01 Plan +5.35		
Project No.:		- PH. 01	R.0	1/3	



0	01	1395-04-15	Rad.Engineer	Rad.Engineer	Rad.Engineer
REV.	Phase Number:	Created date:	Modeled By:	Checked By:	Project Manager:
DESCRIPTION	PROJECT TITLE:		CONTRACTOR:		
SCALE:	N.T.S				
UNIT:	mm		OWNER: جناب آقای مهندس رنجبر		
FIELD:	Structure		CONSULTANT:		
PHASE:	01		DRAWING TITLE: Plan +5.35		
Project No.:		- PH. 01	R. 0	2/3	